

ADAMS COUNTY

Survey Monument Record

TYPE OF MONUMENT: Partial harrison std.

STATE PLANE COORDINATES: N _____

E _____

ELEVATION — M.S.L. DATUM: _____

THETA ANGLE: _____

FIELD BOOK: 108 PAGE 11

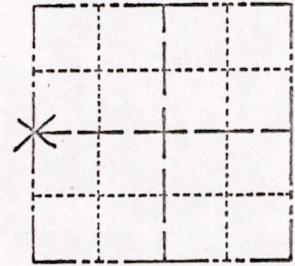
CORNER NO. 266

SECTION 13

TOWN 18

RANGE 7

59



LOCATION (Indicated by 'X')

SEAL:

BASIS FOR MONUMENT LOCATION

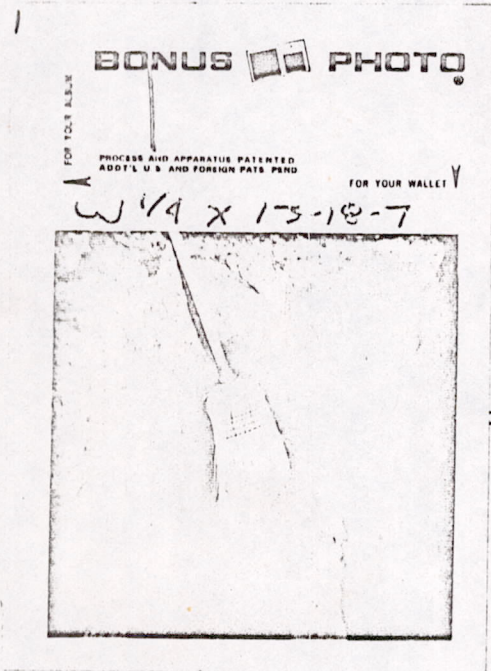
(Use reverse side if necessary)

Show info such as: History of corner, with reference to Vol. and pg, dates, surveyor; exact description of monument replaced; if location computed, by taped or EDM traverse; landowner remarks, etc.

Excavated with backhoe and found stone. See attached picture. Left stone as found and set top \pm ten inches of a Harrison on top of stone. Traverse of section indicates location OK.



3-28-77
GR
OK

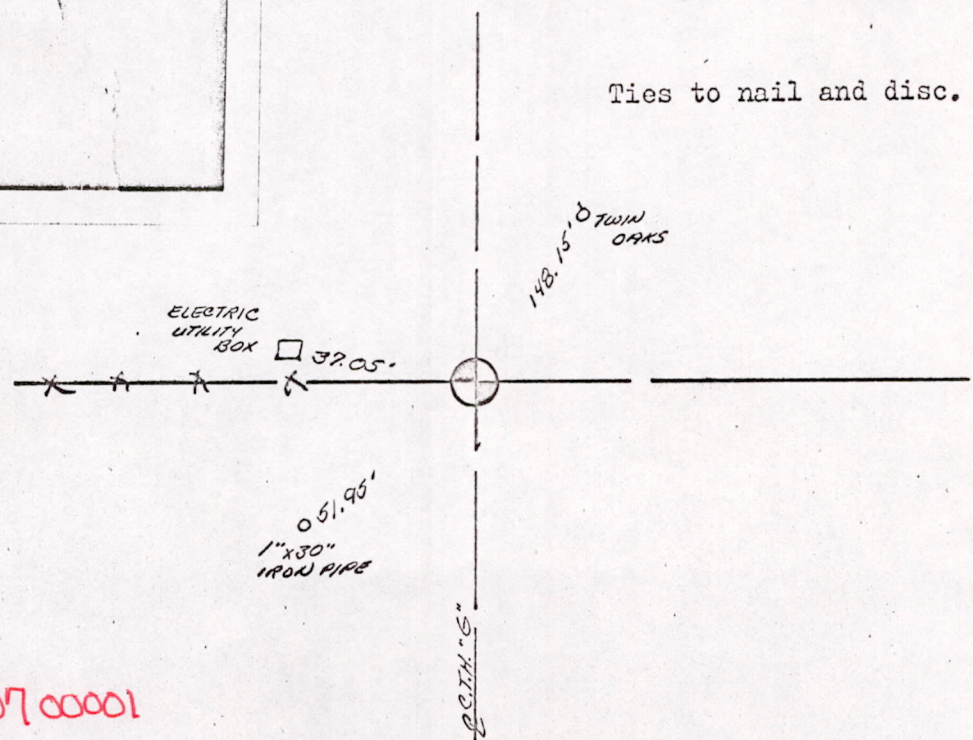


CERTIFIED CORRECT:

Anthony B. Kiedrowski
Registered Land Surveyor

DATE: 14/11/73

Ties to nail and disc.



M/S 131807 00001