

ADAMS COUNTY

Survey Monument Record

TYPE OF MONUMENT: Harrison std.

STATE PLANE COORDINATES: N _____

E _____

ELEVATION — M.S.L. DATUM: _____

THETA ANGLE: _____

FIELD BOOK: 108 PAGE 10

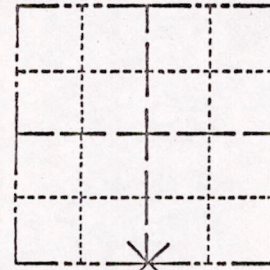
CORNER NO. 200

SECTION 13

TOWN 18

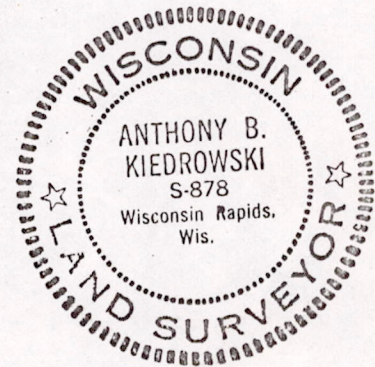
RANGE 7

72



LOCATION
(Indicated by 'X')

SEAL:



BASIS FOR MONUMENT LOCATION

(Use reverse side if necessary)

Show info such as: History of corner, with reference to Vol. and pg, dates, surveyor; exact description of monument replaced; if location computed, by taped or EDM traverse; landowner remarks, etc.

Set half way between section corners, but not on a straight line, since this fell too far north of road.

Dug in area with backhoe but found nothing.

OK - GR - 55
3-14-77

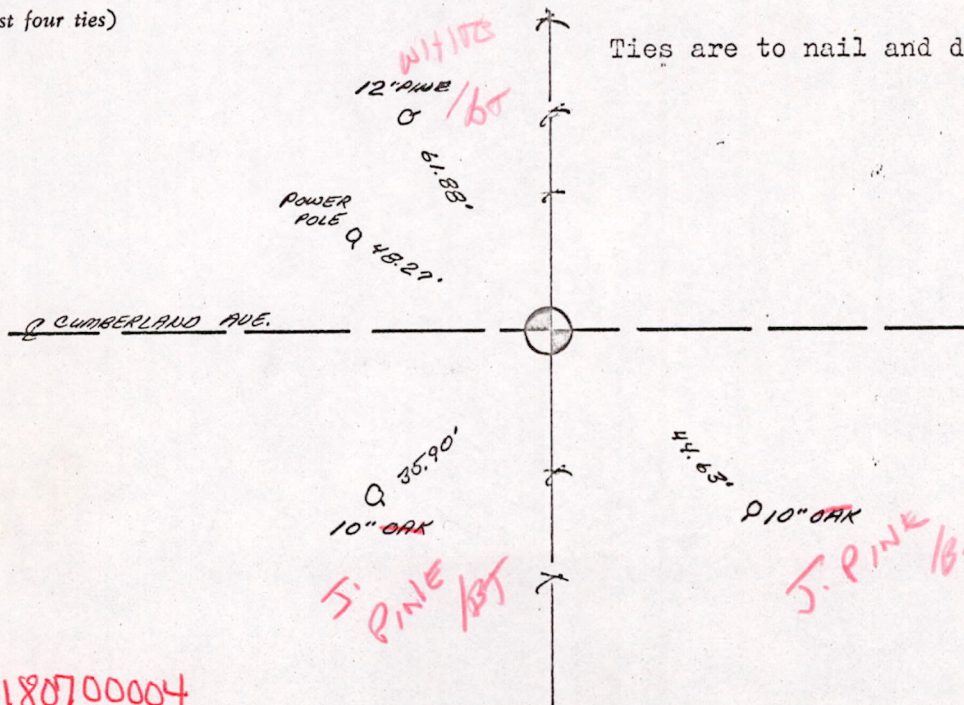
CERTIFIED CORRECT:

Anthony B. Kiedrowski
Registered Land Surveyor

DATE: 4/11/73

TIE SKETCH

(Show at least four ties)



Ties are to nail and disc.

MUS13180700004