

ADAMS COUNTY

Survey Monument Record

TYPE OF MONUMENT: Harrison

STATE PLANE COORDINATES: N \_\_\_\_\_

E \_\_\_\_\_

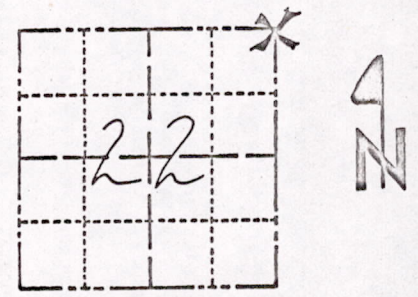
ELEVATION — M.S.L. DATUM: \_\_\_\_\_

THETA ANGLE: \_\_\_\_\_

FIELD BOOK: 41 PAGE 18

CORNER NO. 01  
1087  
SECTION 22  
TOWN 18  
RANGE 7

69



LOCATION  
(Indicated by 'X')

SEAL:



BASIS FOR MONUMENT LOCATION

(Use reverse side if necessary)

Show info such as: History of corner, with reference to Vol. and pg. dates, surveyor; exact description of monument replaced; if location computed, by taped or EDM traverse; landowner remarks, etc.

Excavated with backhoe and found 2 stones—the top stone was 8"x10"x14" pointed black granite with the point up, and the bottom 10"x10"x8" flat red granite laid flat beneath the black granite.

Lowered stones and set Harrison on top.

Set 5-20-76.

OK 3-14-77  
GR-58

CERTIFIED CORRECT:

*Anthony B. Kiedrowski*  
Registered Land Surveyor

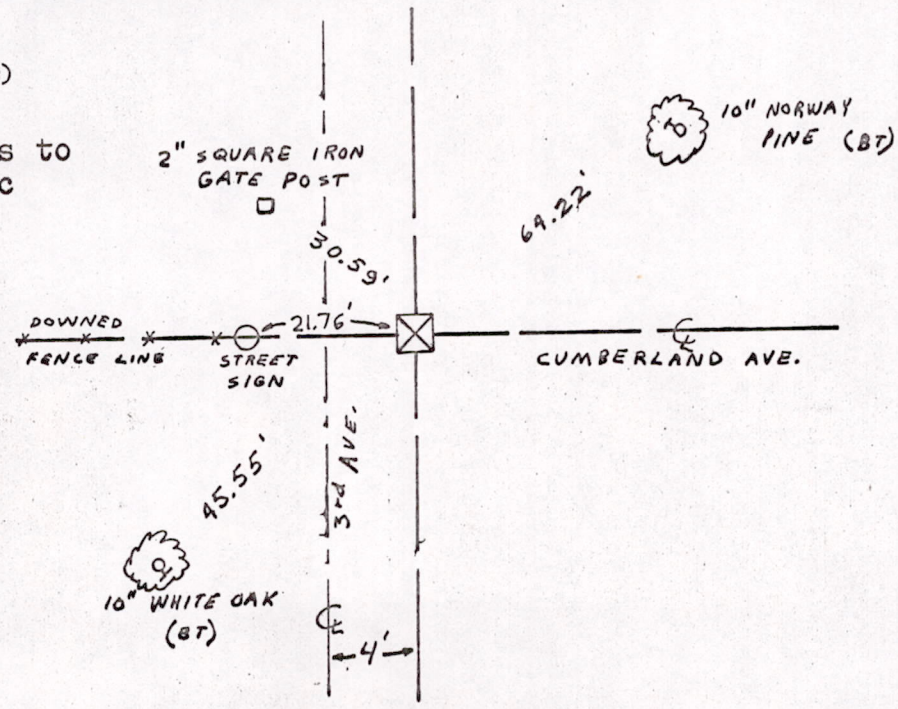
DATE: 9-21-76

TIE SKETCH

(Show at least four ties)

NOTE:

Ties in trees to nail and disc in blaze.



MIS 22180700001