

CERTIFIED LAND CORNER

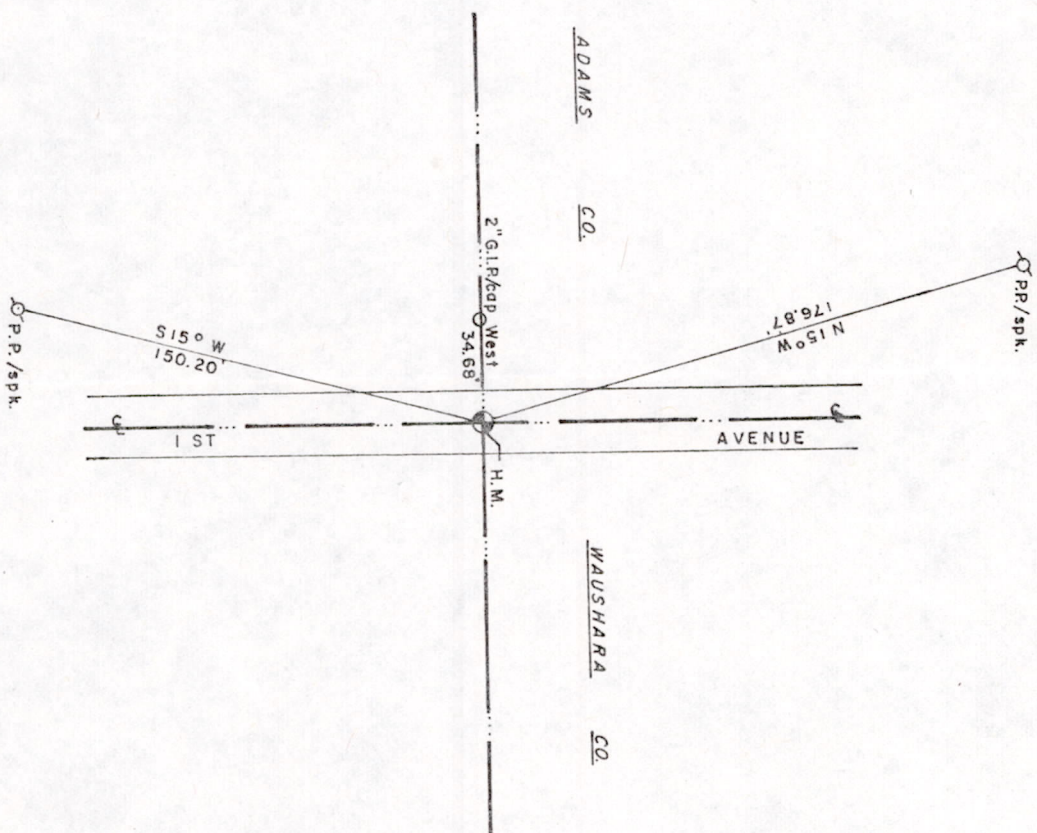
Description of corner evidence found:

I, Gary E. Schindler, do hereby certify that on the 15<sup>th</sup> day of Oct 19 81 I found (evidence) (no evidence) of the W1/4 corner of Sec 19, T 18 N, R 8 E, Fourth Principal Meridian, and I established said corner according to the Wisconsin Statutes as shown and described hereon.

Dated this 19<sup>th</sup> day of Oct 1981

Gary E. Schindler  
Waushara County Surveyor

Monument set by single proportionate measurement

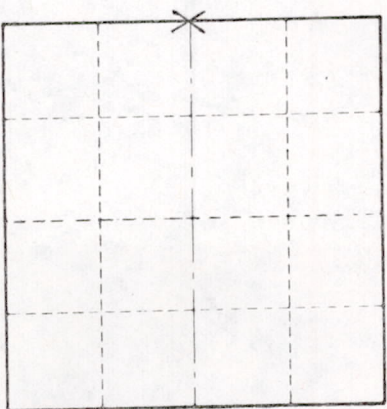


Witnesses to corner location:

PATRICK G. KRIER

STEVEN J. WAAK

Section 19



X = LOCATION CORNER

T 18 N R 8 E  
WISCONSIN

SURVEY CONTROL ORDER

Horizontal	
Vertical	

WISCONSIN COORDINATE SYSTEM

Corner	East (X)	North (Y)	Elevation (Z)	Zone
Control Sta. Name				

Approved By:

File: 24-18-7

M1524180700001

Waushara County Highway Commissioner