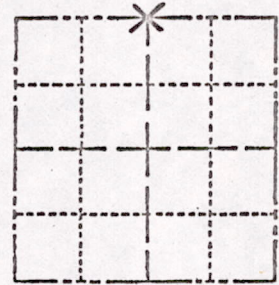


Survey Monument Record

TYPE OF MONUMENT: Harrison standard  
STATE PLANE COORDINATES: N \_\_\_\_\_  
E \_\_\_\_\_  
ELEVATION — M.S.L. DATUM: \_\_\_\_\_  
THETA ANGLE: \_\_\_\_\_  
FIELD BOOK: \_\_\_\_\_ PAGE \_\_\_\_\_

SECTION 33  
TOWN 18  
RANGE 7



LOCATION  
(Indicated by 'X')

SEAL:

BASIS FOR MONUMENT LOCATION

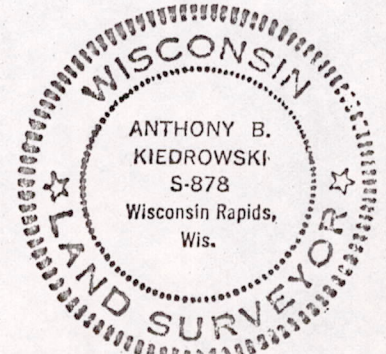
(Use reverse side if necessary)

Show info such as: History of corner, with reference to Vol. and pg, dates, surveyor; exact description of monument replaced; if location computed, by taped or EDM traverse; landowner remarks, etc.

Excavated with backhoe and found  
6" x 8" x 16" sandstone.  
Lowered stone and set Harrison on top.

Stone by M.S. Smith 1913  
Vol 1 pg 172

OK 3-14-27 CR-SS



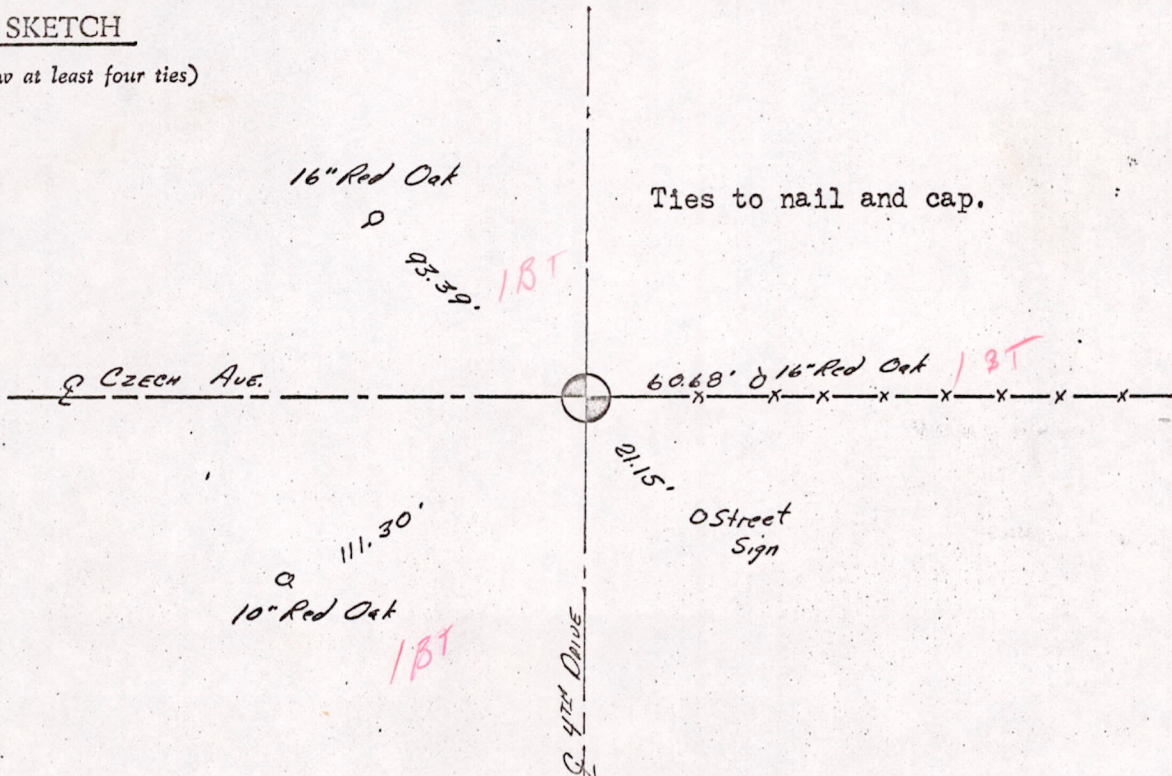
CERTIFIED CORRECT:

*Anthony B. Kiedrowski*  
Registered Land Surveyor

DATE: 6/2/74

TIE SKETCH

(Show at least four ties)



MLS 33180700003