

ADAMS COUNTY

Survey Monument Record

TYPE OF MONUMENT: Standard Harrison

STATE PLANE COORDINATES: N \_\_\_\_\_  
E \_\_\_\_\_

ELEVATION — M.S.L. DATUM: \_\_\_\_\_

THETA ANGLE: \_\_\_\_\_

FIELD BOOK: \_\_\_\_\_ PAGE \_\_\_\_\_

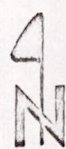
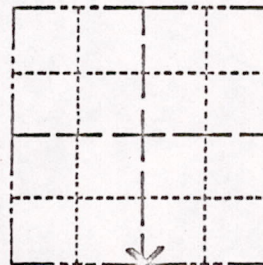
CORNER NO. 564

SECTION 33

TOWN 18

RANGE 7

24



LOCATION  
(Indicated by 'X')

SEAL:

BASIS FOR MONUMENT LOCATION

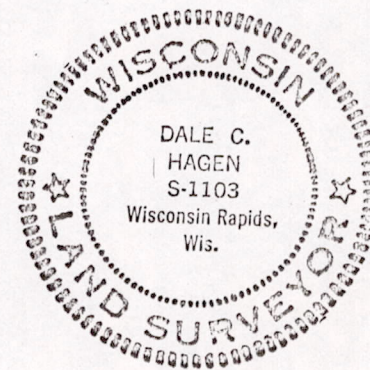
(Use reverse side if necessary)

Show info such as: History of corner, with reference to Vol. and pg. dates, surveyor; exact description of monument replaced; if location computed, by taped or EDM traverse; landowner remarks, etc.

Excavated with backhoe, but could find no evidence of the original corner or any of its accessory monuments or remonumentation.

Relocated corner by retracing survey by M. C. Smith on April 16, 1913. Found Stone at Center of Section and North Quarter corner, and doubled over to set South Quarter corner.

OK  
3-14-77  
GR-55



CERTIFIED CORRECT:

Dale C. Hagen  
Registered Land Surveyor

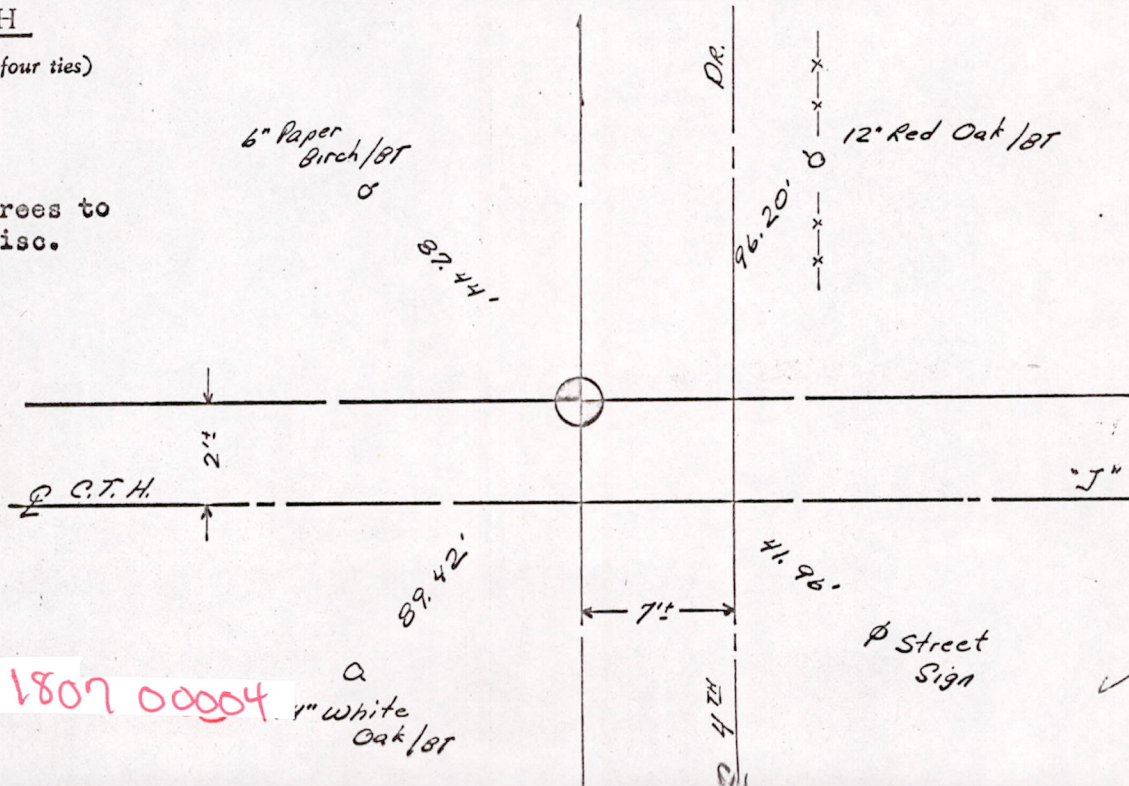
DATE: October 4, 1974

TIE SKETCH

(Show at least four ties)

NOTE:

Ties in trees to nail in disc.



MIS 33 1807 00004  
Ø 4 TH