

WAUSHARA COUNTY
CERTIFIED LAND CORNER

No. 114

I, Gary E. Schindler, do hereby certify that on the 15th day of October 1981, I found (evidence) (no evidence) of the City corner of Sec 31, T 28 N, R B E, Fourth Principal Meridian, and I re-established said corner according to the Wisconsin Statutes as shown and described hereon.

Dated this 15th day of Oct 1981

Gary E. Schindler
Waushara County Surveyor

was set H.M. over stone

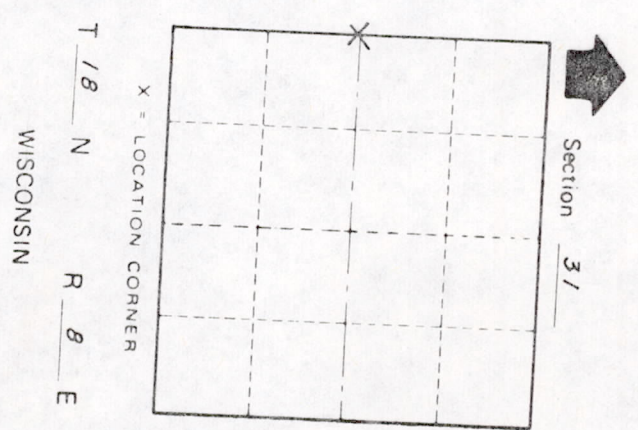
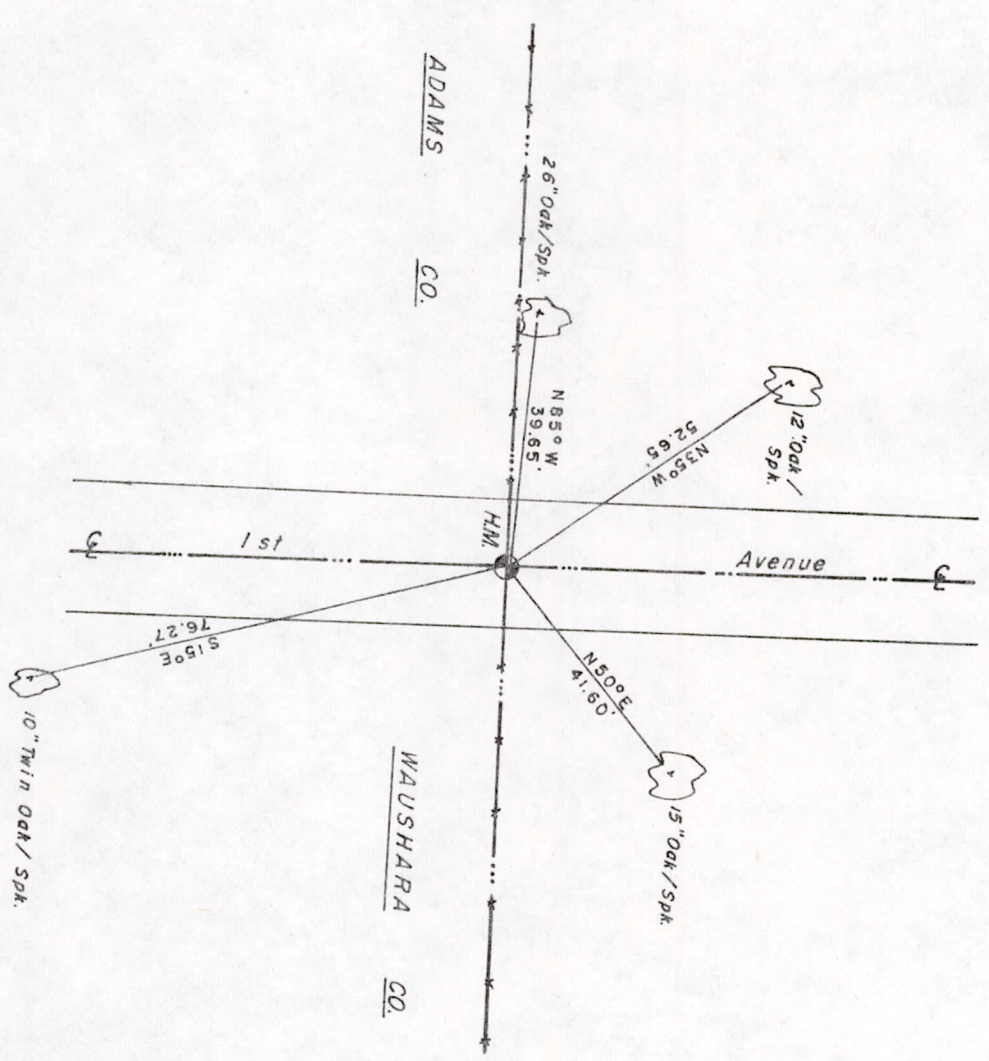
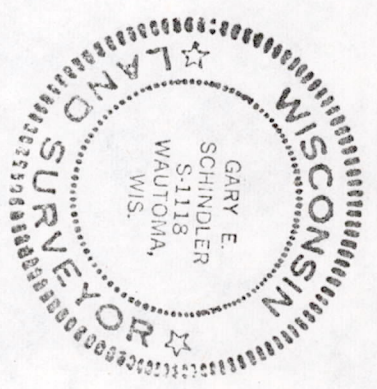
Description of corner evidence found:

6" x 6" x 24" Stone Monument

Witnesses to corner location:

Anthony Kiedrowski

Steven Waack



SURVEY CONTROL ORDER

Horizontal		East (X)		North (Y)		Elevation (Z)		Zone
Vertical								
Corner								
Control Sta. Name								

MIS36180700001

File: 36-18-7

Approved By: