

WAUSHARA COUNTY
CERTIFIED LAND CORNER

I, Gary E. Schindler, do hereby certify that on the 15th day of October 1981, I found (evidence) (no evidence) of the NW corner of S 31, T 18 N, R 8 E, Fourth Principal Meridian, and I re-established said corner according to the Wisconsin Statutes as shown and described hereon.

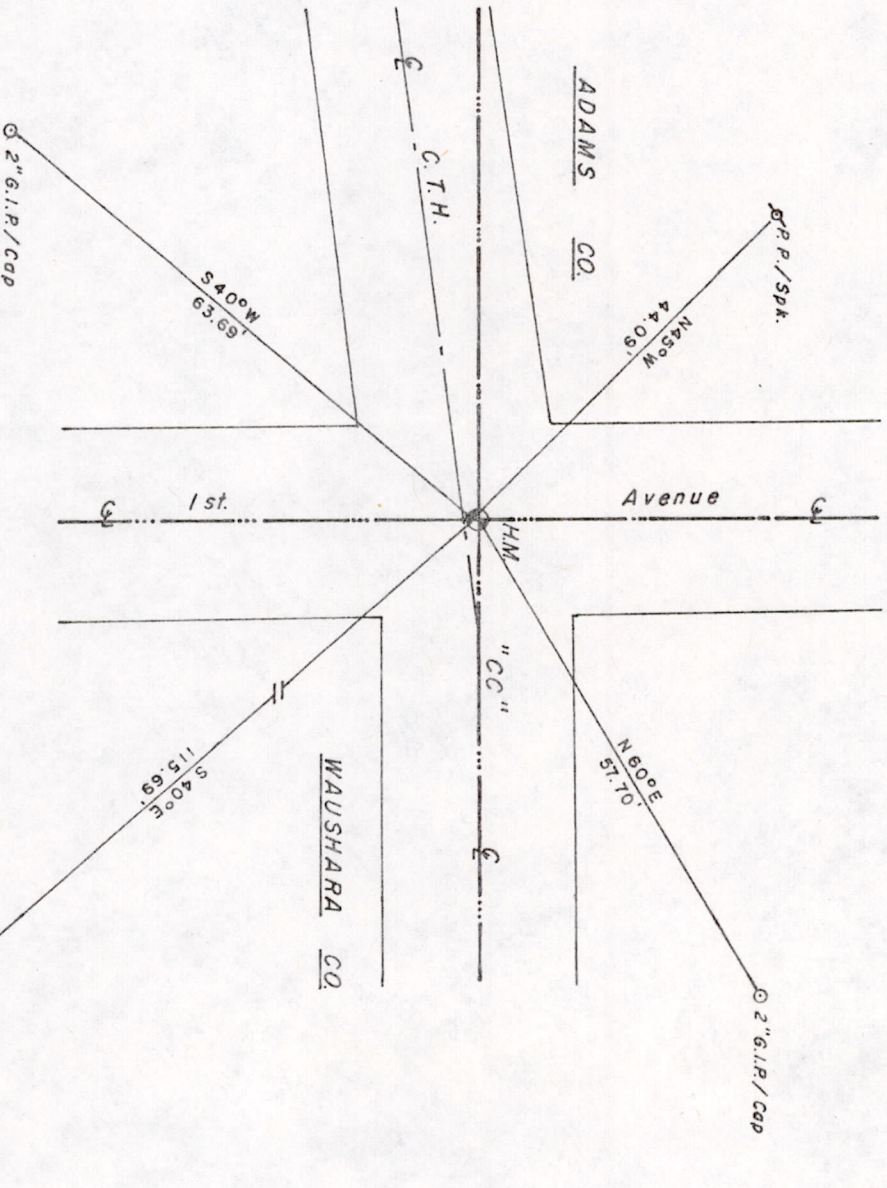
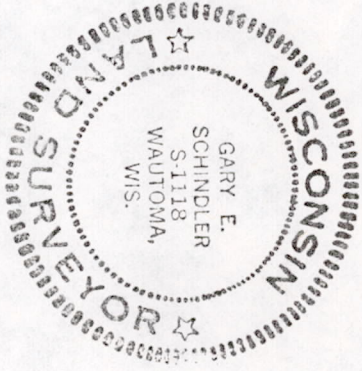
Dated this 15th day of Oct 1981

Gary E. Schindler
Waushara County Surveyor

We set H.M. over stone

Description of corner evidence found:

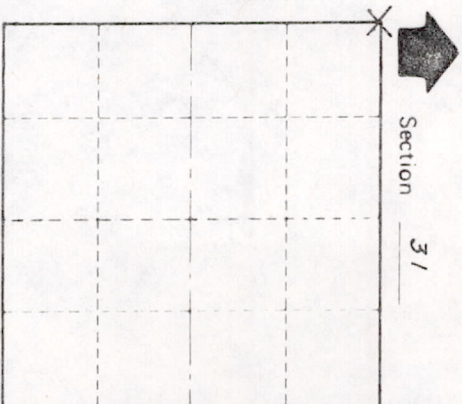
10" x 12" x 12" stone



Witnesses to corner location:

Anthony Kiedrowski

Steven Waak



T 18 N R 8 E
WISCONSIN

SURVEY CONTROL ORDER

Horizontal		East (X)	North (Y)	Elevation (Z)	Zone
Vertical					
Corner					
Control Sta. Name					

WISCONSIN COORDINATE SYSTEM

MIS361807 00002

Approved By:

File: 36-18-7