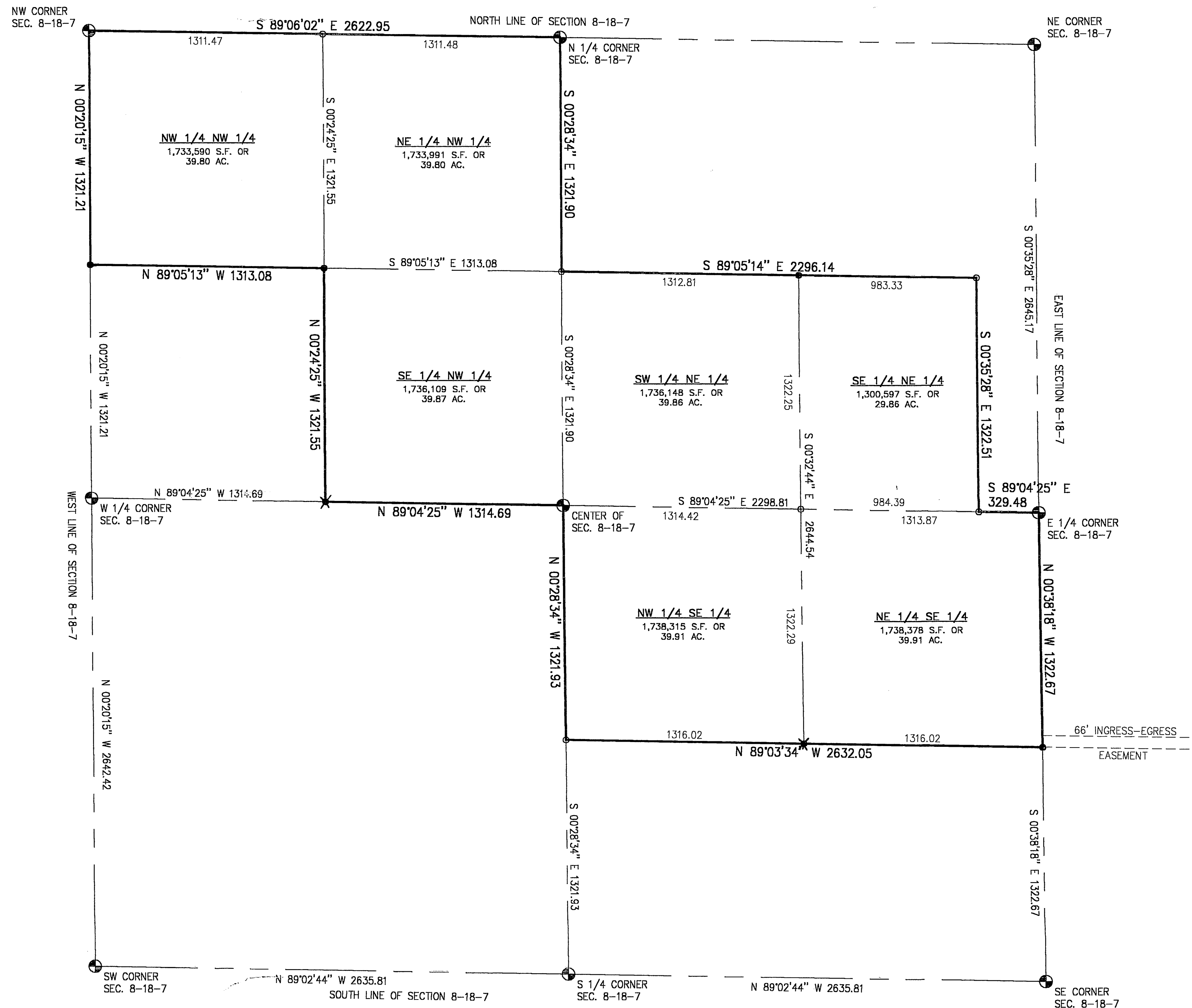
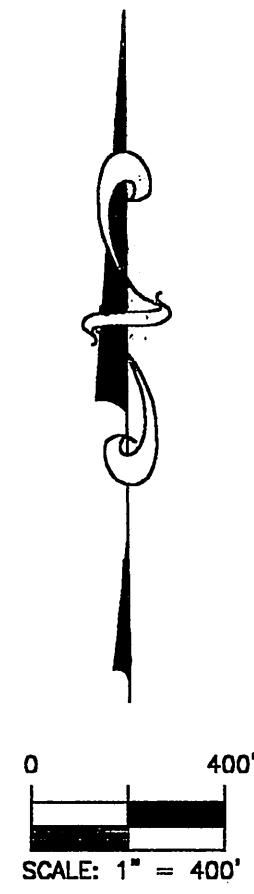
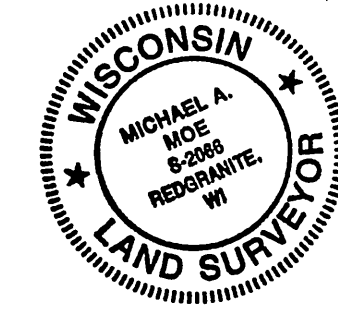


# PLAT OF SURVEY

PART OF THE NW 1/4, NE 1/4, SW 1/4 AND SE 1/4 OF SECTION 8, TOWNSHIP 18 NORTH, RANGE 12 EAST,  
TOWN OF RICHFIELD, ADAMS COUNTY, WISCONSIN.

The NW<sup>1</sup>/<sub>4</sub>SE<sup>1</sup>/<sub>4</sub>, The NW<sup>1</sup>/<sub>4</sub>NW<sup>1</sup>/<sub>4</sub>, The NE<sup>1</sup>/<sub>4</sub>NW<sup>1</sup>/<sub>4</sub>, The SE<sup>1</sup>/<sub>4</sub>NW<sup>1</sup>/<sub>4</sub>, The SW<sup>1</sup>/<sub>4</sub>NE<sup>1</sup>/<sub>4</sub>, The NE<sup>1</sup>/<sub>4</sub>SE<sup>1</sup>/<sub>4</sub>, The NW<sup>1</sup>/<sub>4</sub>SE<sup>1</sup>/<sub>4</sub> and the SE<sup>1</sup>/<sub>4</sub>NE<sup>1</sup>/<sub>4</sub> LESS and Except the East 10 Acres, all in T18N, R7E, Town of Richfield, Adams County, Wisconsin. TOGETHER WITH a non exclusive easement for ingress and egress over the North 66 feet of the South 68 feet of the W<sup>1</sup>/<sub>2</sub>NE<sup>1</sup>/<sub>4</sub>SW<sup>1</sup>/<sub>4</sub>, and the NW<sup>1</sup>/<sub>4</sub>SW<sup>1</sup>/<sub>4</sub> of Section 9, T18N, R7E, Town of Richfield, Adams County, Wisconsin.

*Michael A. Moe*  
Michael A. Moe, RLS 2066  
December 28, 1998  
Drafted by S.C.Barber



- ⊙ Existing County Monument
- Existing IP
- Set 3/4" x 24" Rebars weighing 1.50 lbs. / lin. ft.
- ✕ EXISTING 2" IP w/ Brass CAP

P0508180711001

BASIS OF BEARING FOR THIS MAP IS THE NORTH LINE OF SECTION 8, T. 18 N., R. 7 E., IN THE TOWN OF RICHFIELD, ADAMS COUNTY, WISCONSIN. ASSUMED TO BE S 89°06'02" E.

**MOE LAND SURVEYING, INC.**

MICHAEL A. MOE  
PATRICK G. KRIER  
REDGRANITE WISCONSIN 54970

JOB # \_\_\_\_\_