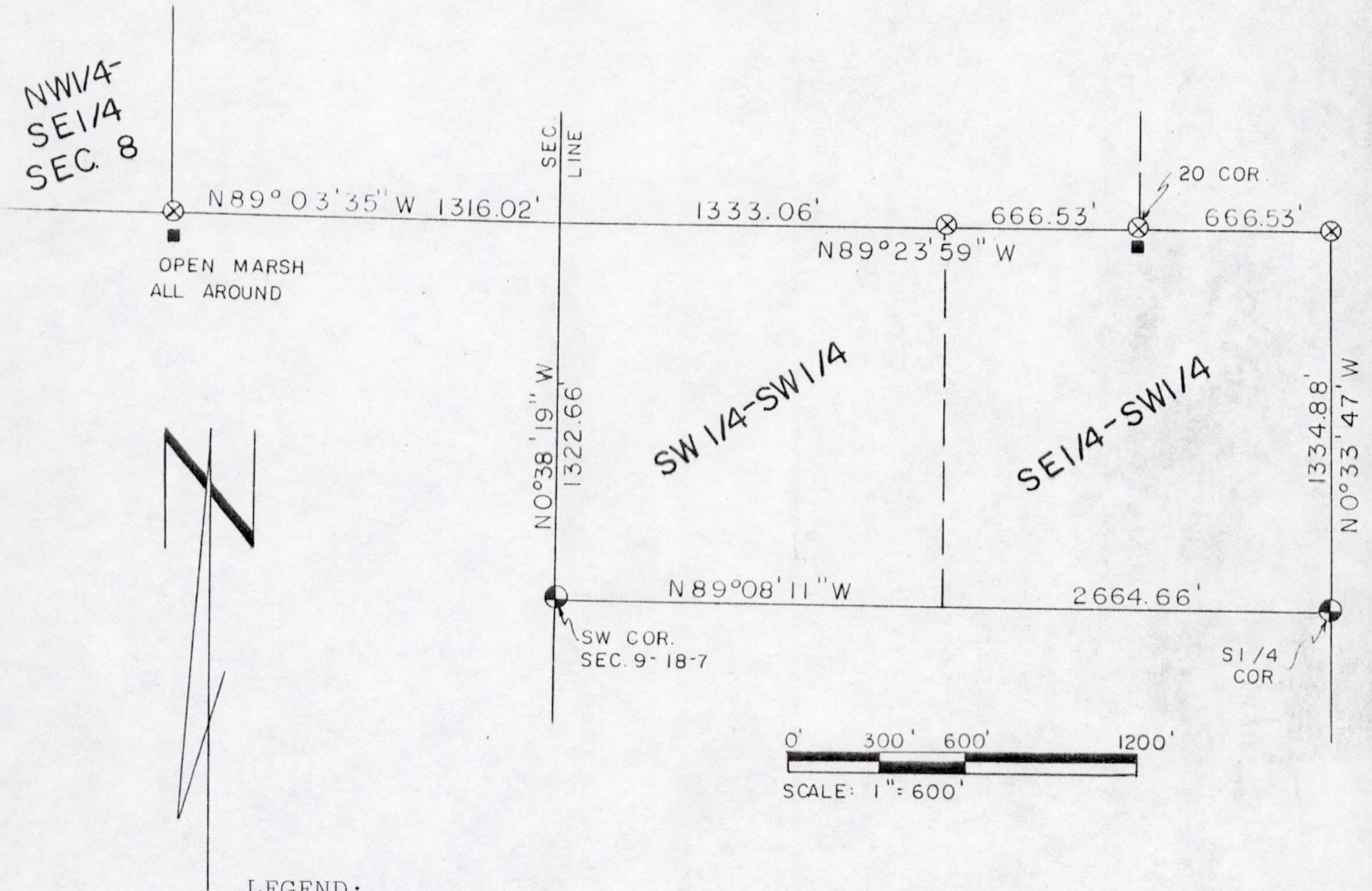


105012

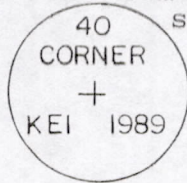
PLAT OF SURVEY

SHOWING CORNERS SET IN SECTIONS 8 AND 9,
TOWN 18 NORTH, RANGE 7 EAST, TOWN OF RICH-
FIELD, ADAMS COUNTY, WISCONSIN.



LEGEND:

- ⊗ 2"x30" Iron Pipe Set with alum. cap
3.65 Lbs./Ft. stamped
- ⊕ Harrison Monument
- 5' U Post



FOR: Henry Jacobs, Jr.

KIEDROWSKI ENGINEERING, INC.
4340 - 80th St. So.
Wisconsin Rapids, WI 54494
FB 116/7
Drafted by: S.J. Haumschild

Anthony B. Kiedrowski
Anthony B. Kiedrowski
RLS 878
January 31, 1989

POS08180731001