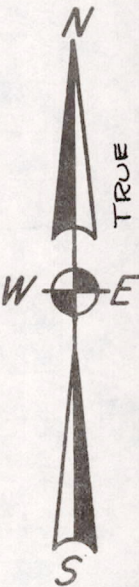
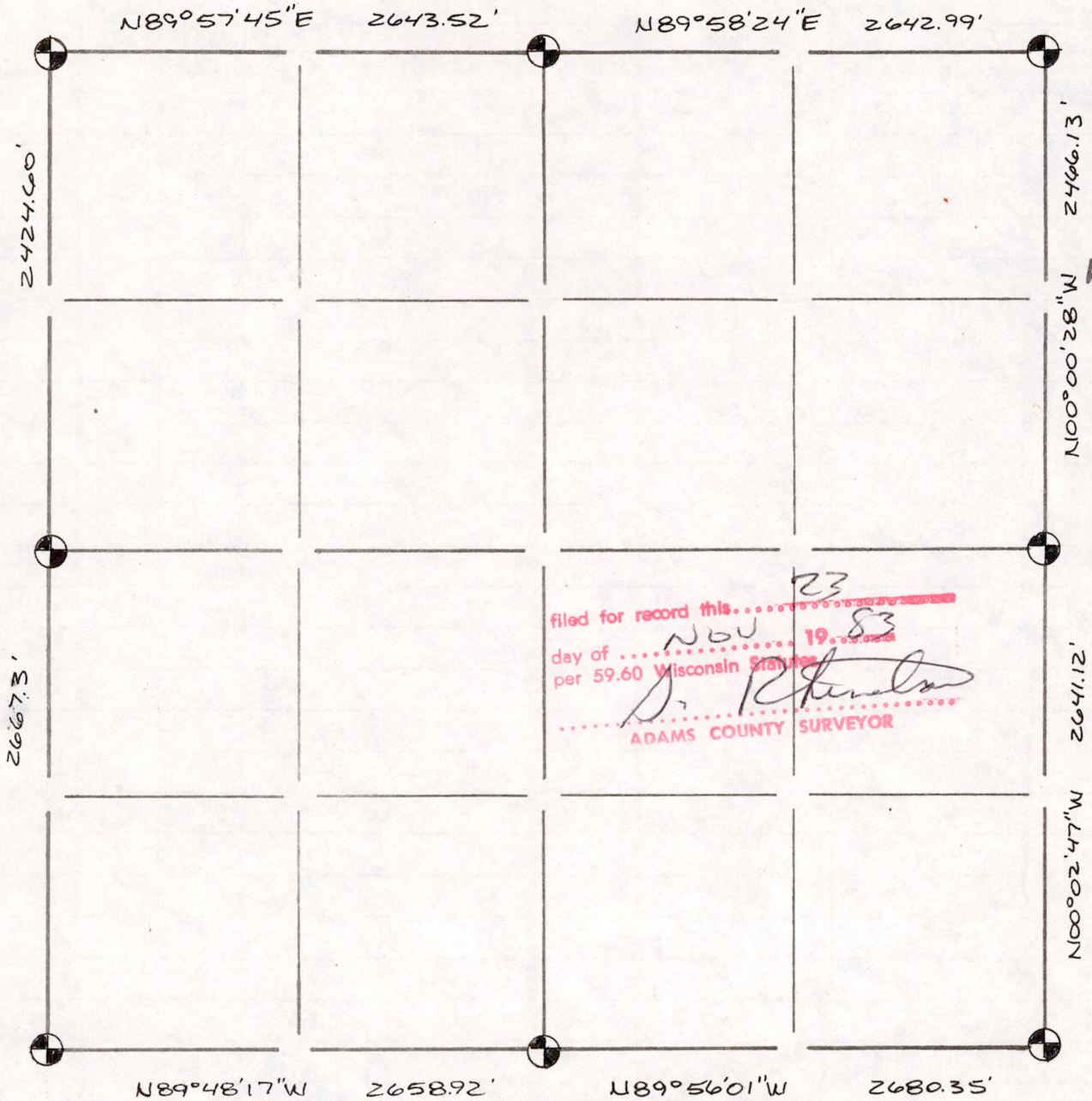


Section Summary and Index

2 - 18N - 7E
 Section Town Range

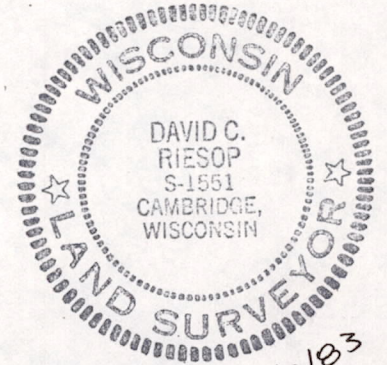


filed for record this 23
 day of NOV 1983
 per 59.60 Wisconsin Statutes
D. R. [Signature]
 ADAMS COUNTY SURVEYOR

LEGEND

- ⊙ - Harrison cast iron monument.
- - Stone or concrete monument.
- - Other _____

Sec 02180700001



11/2/83