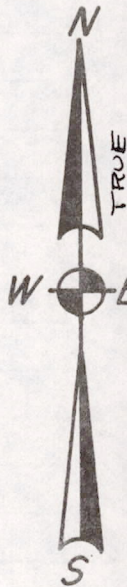
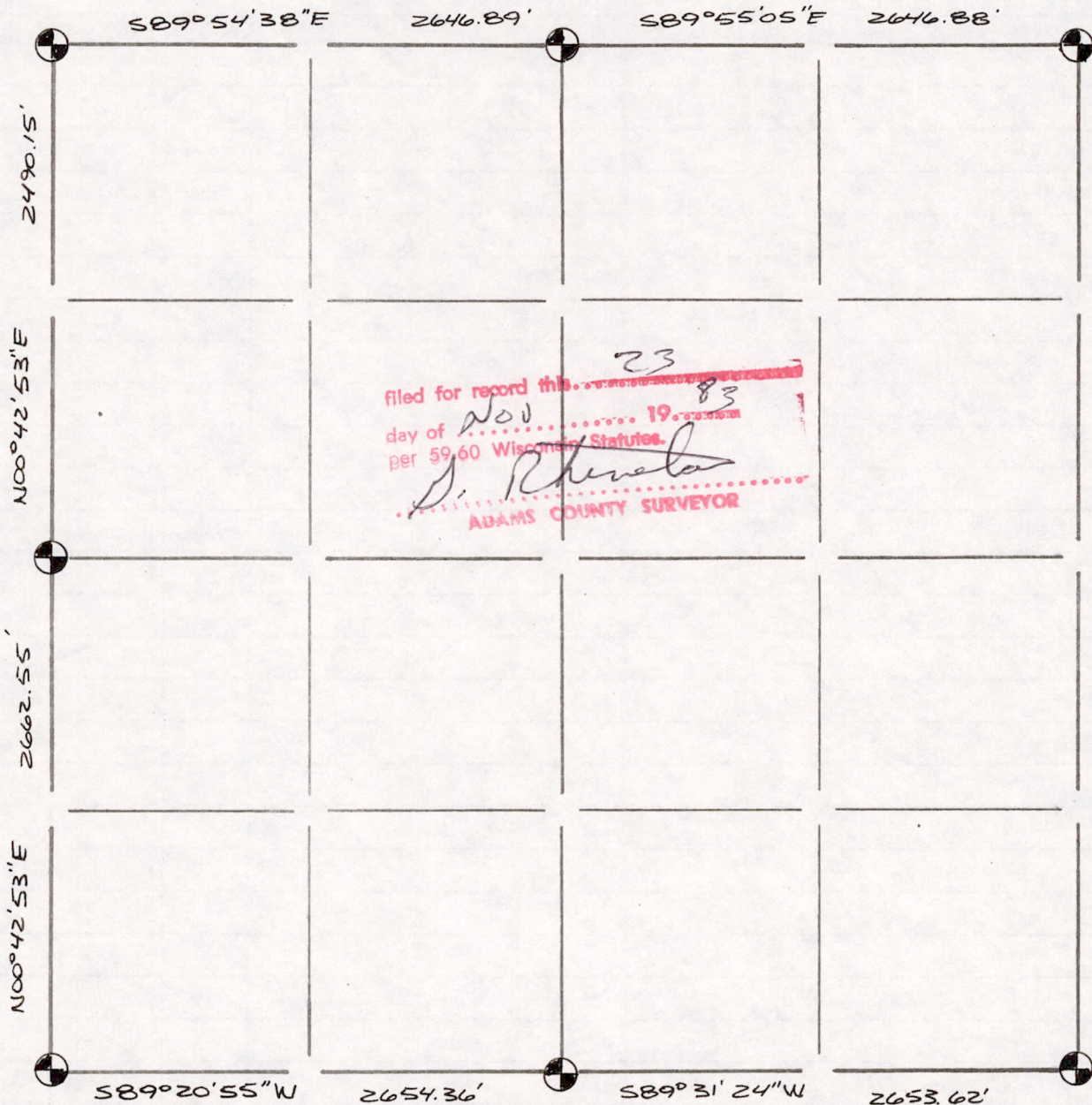


Section Summary and Index

3 - 18N - 7E
 Section Town Range

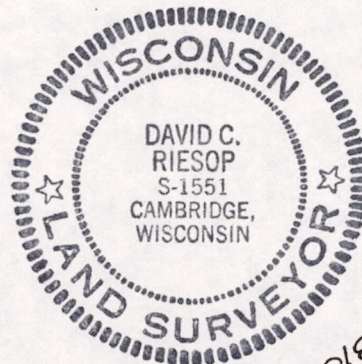


filed for record this ²³ day of ^{Nov} 19⁸³ per 59.60 Wisconsin Statutes.
D. R. Knevel
 ADAMS COUNTY SURVEYOR

LEGEND

- ⊕ - Harrison cast iron monument.
- - Stone or concrete monument.
- - Other _____

Sec 03180700001



9/30/83