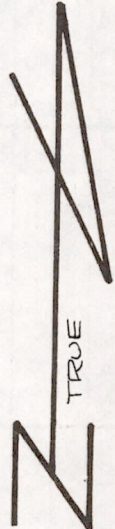
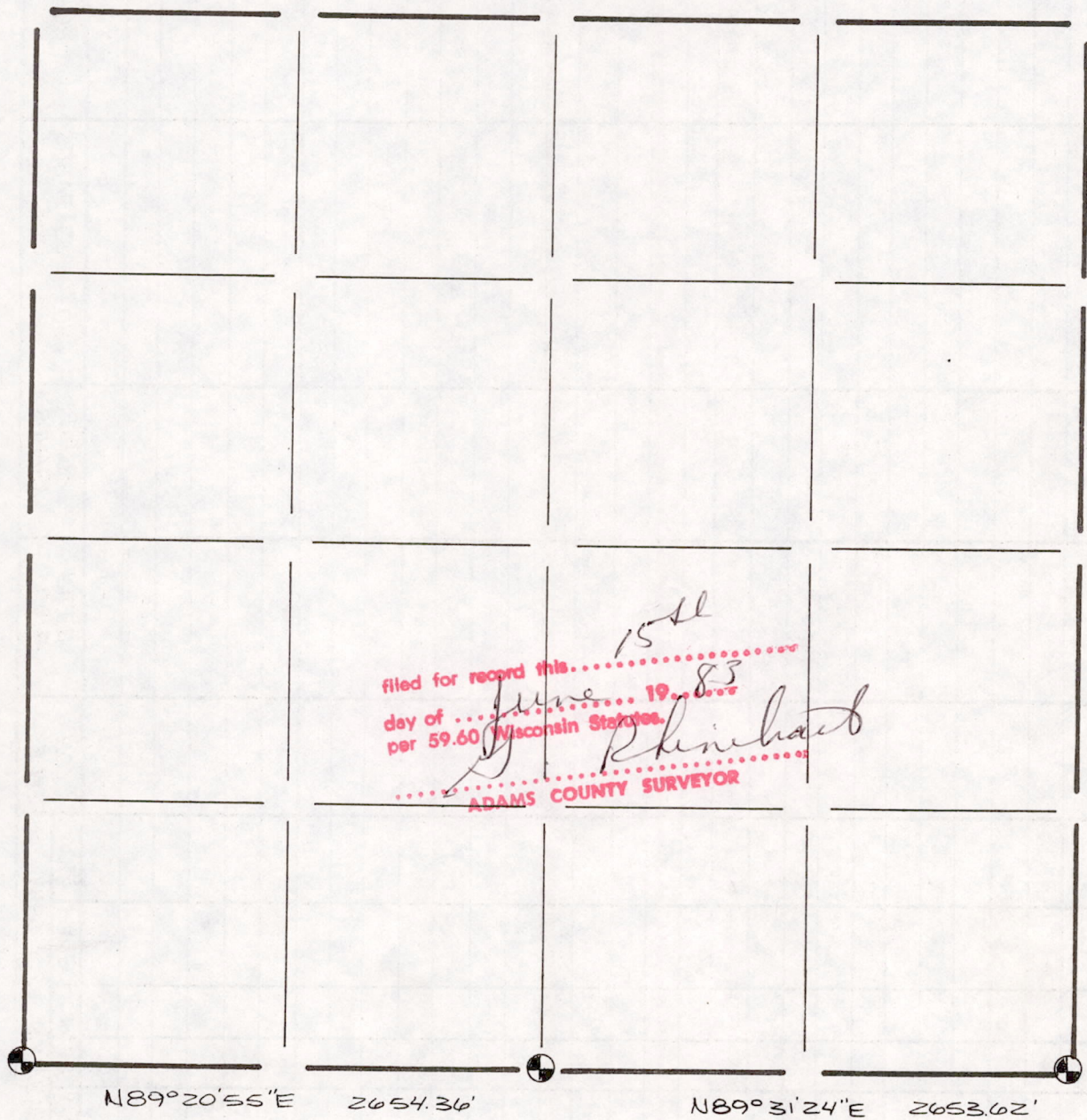





SECTION SUMMARY AND INDEX

3 - 18N - 7E
SECTION TOWN RANGE



15th
filed for record this
day of June 19th 83
per 59.60 Wisconsin Statutes.
D. R. Klinehart
ADAMS COUNTY SURVEYOR

LEGEND

-  HARRISON CAST IRON MONUMENT
-  STONE OR CONCRETE MONUMENT
-  OTHER _____
- _____
- _____



Sec 03180700002

5/26/83