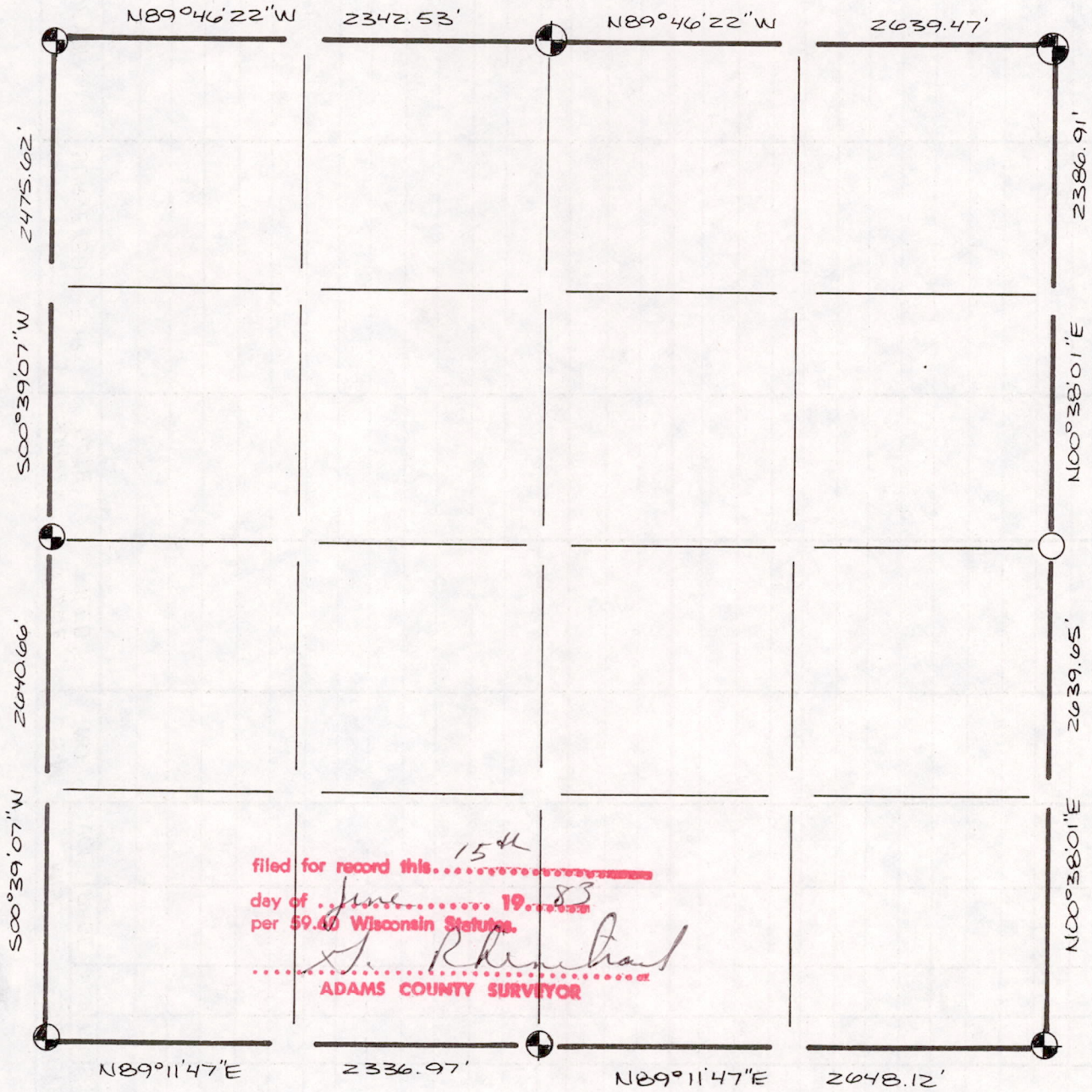





SECTION SUMMARY AND INDEX

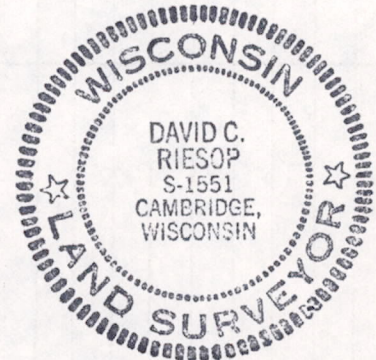
6 — 18N — 7E  
SECTION TOWN RANGE



filed for record this <sup>15<sup>th</sup></sup> day of June 19<sup>83</sup> per 59.40 Wisconsin Statutes.  
*S. Rhenhart*  
ADAMS COUNTY SURVEYOR

LEGEND

-  HARRISON CAST IRON MONUMENT
-  STONE OR CONCRETE MONUMENT
-  OTHER 2" I.D. x 60" GALVANIZED PIPE



Sec 06180700001

5/27/83