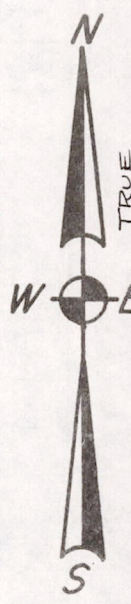
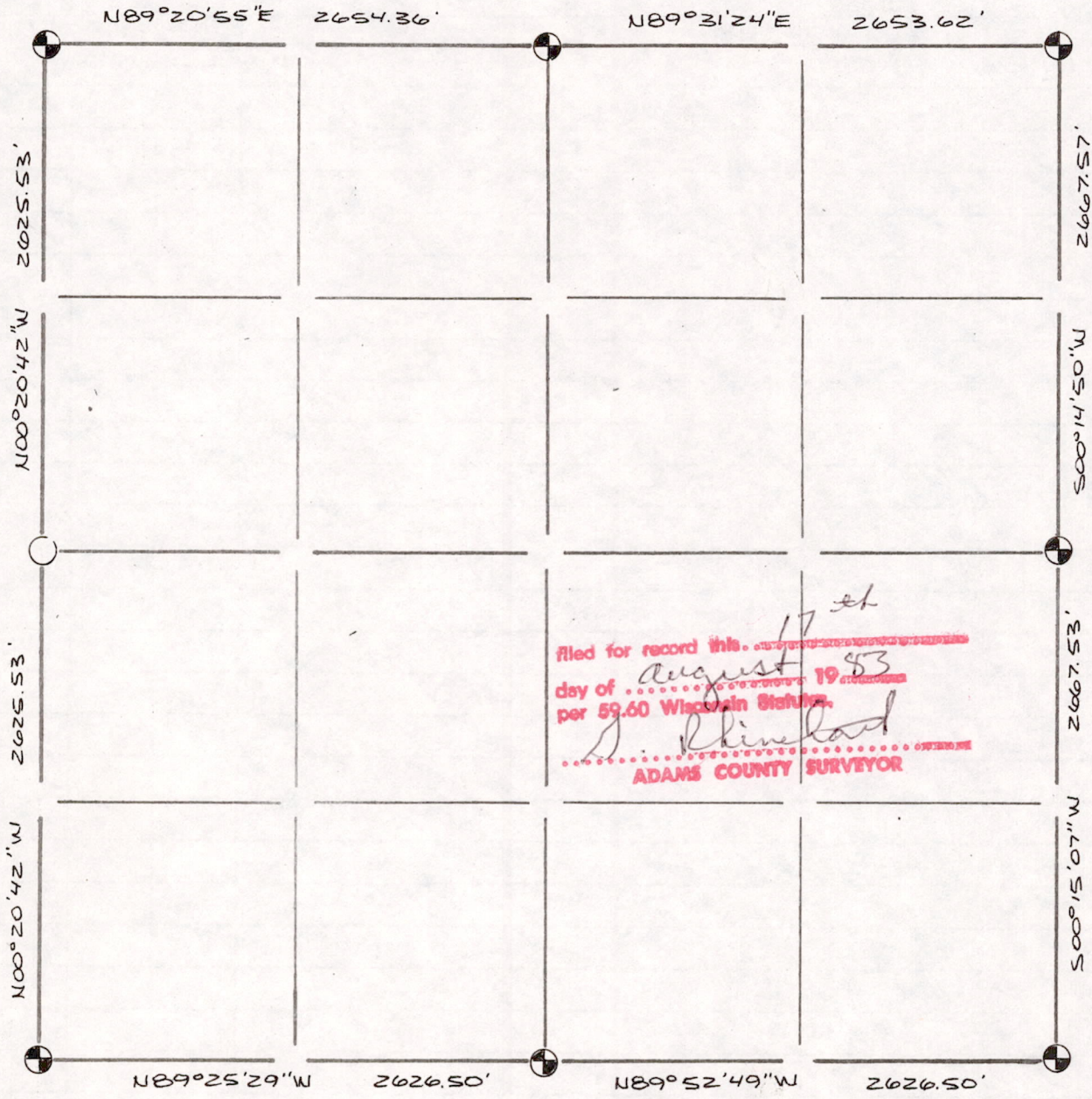


Section Summary and Index

10 18N 7E
 Section Town Range



Filed for record this 17th day of August 1953 per 59.60 Wisconsin Statutes.
D. Rhineland
 ADAMS COUNTY SURVEYOR

LEGEND

- ⊙ - Harrison cast iron monument.
- - Stone or concrete monument.
- - Other 2" ID. X 60" GALVANIZED PIPE

Sec 10180700001



7/28/83