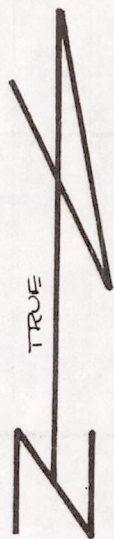
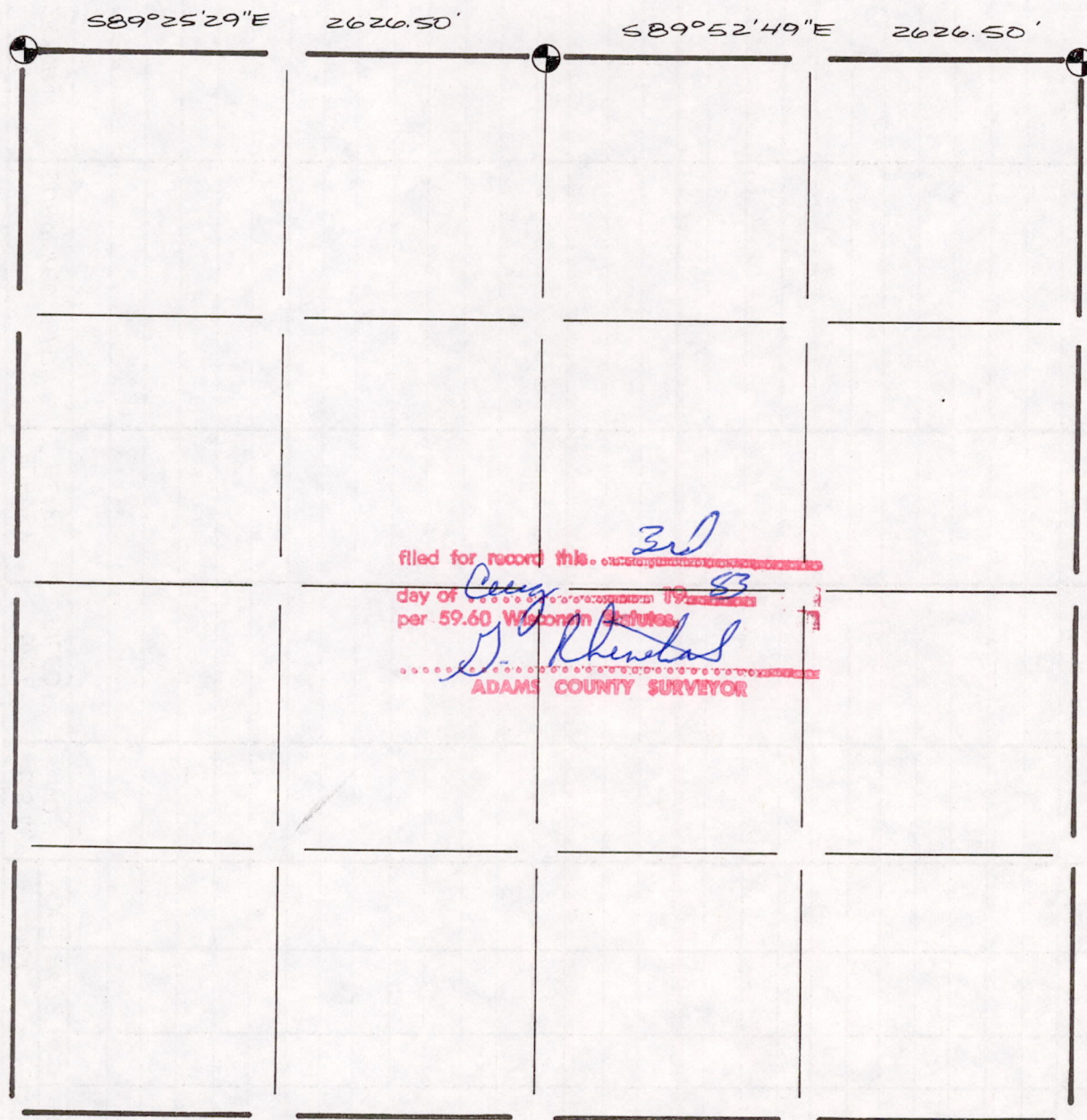





SECTION SUMMARY AND INDEX

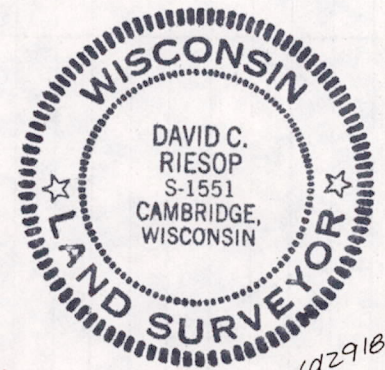
15 — 18N — 7E
SECTION TOWN RANGE



filed for record this 3rd
day of Aug 1983
per 59.60 Wisconsin Statutes
D. Rhindas
ADAMS COUNTY SURVEYOR

LEGEND

-  HARRISON CAST IRON MONUMENT
-  STONE OR CONCRETE MONUMENT
-  OTHER _____
- _____
- _____



Sec 15180700001

029183