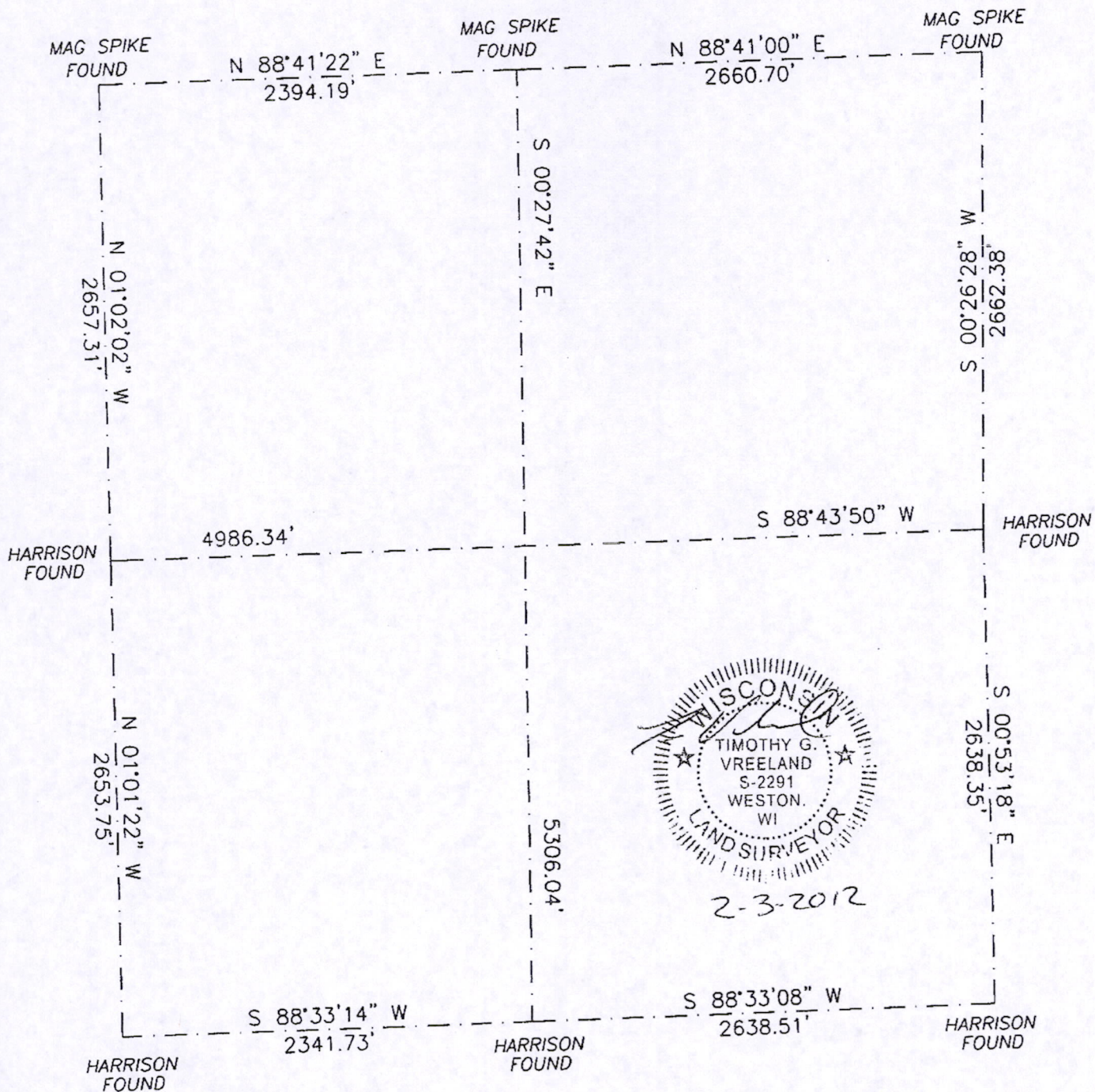


# SECTION 19, T 18 N, R 7 E TOWN OF RICHFIELD

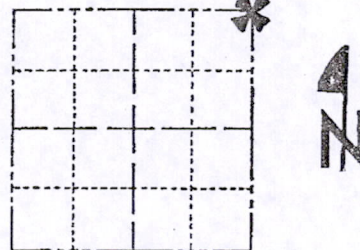


Sec 19 180700003

# Government Land Corner Certificate

ADAMS County  
 TYPE OF MONUMENT: P.K. NAIL P.P. SPIKE  
 STATE PLANE COORDINATES: N \_\_\_\_\_  
 E \_\_\_\_\_  
 ELEVATION — M.S.L. DATUM: \_\_\_\_\_  
 THETA ANGLE: \_\_\_\_\_  
 FIELD BOOK: A-F 3 PAGE 40  
 DRAWN BY: S. SORENSEN

CORNER NO. 63  
 SECTION 19  
 TOWN 18  
 RANGE 7



LOCATION  
(Indicated by 'X')

## BASIS FOR MONUMENT LOCATION

Show info such as: History of corner, with reference to Vol. and pg., dates, surveyor; exact description of monument replaced; if location computed, by taped or EDM traverse; landowner remarks, etc. (Use reverse side if necessary)

Reset corner from stumps of M.C. Smith bearing trees as filed in loose notes in Adams County surveyor records and field book 3 pg. 115 (April 26, 1906) This corner was used in a survey of the south line of section 18 by M.C. Smith and fits possession quite well. Smith's bearing trees are recorded as  
 10" black oak N28 $\frac{1}{2}$ °W 99 links (65.34')  
 10" black oak N41°E 102 links (67.32')

SEAL:



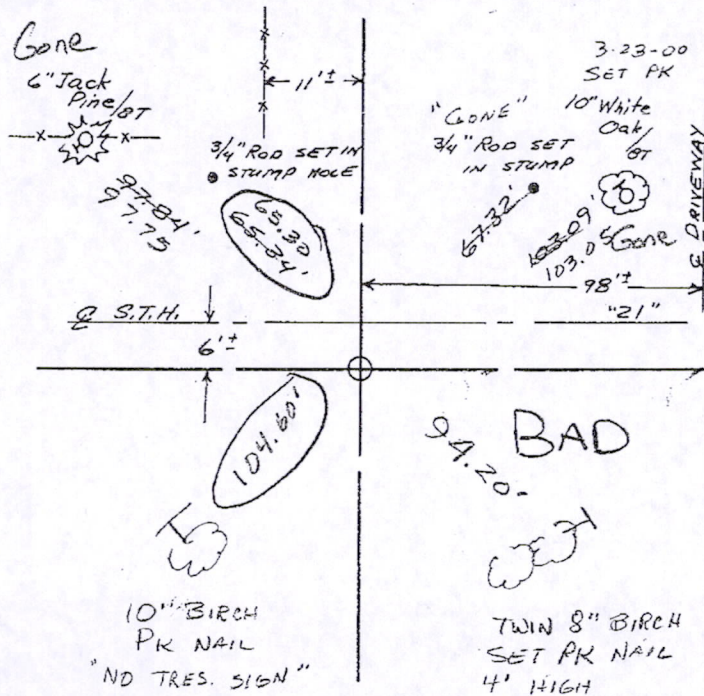
DATA SHOWN HERE ON  
CERTIFIED CORRECT:

*Gregory P. Rhinehart*  
Registered Land Surveyor

DATE: 2-24-81

## TIE SKETCH

Show at least four ties, also fence lines, roads, topo, size and type of witness trees and if off road - best way to arrive at corner.



## MAINTENANCE RECORD

Date	Init.	Remarks
8-20-82	PK-SS	O.K.
2-24-87	SS	"
11-4-91	SS-JG	"
1-2-98	SS	OK
1-18-02	GPEB	OK
4-11-07	JG	OK