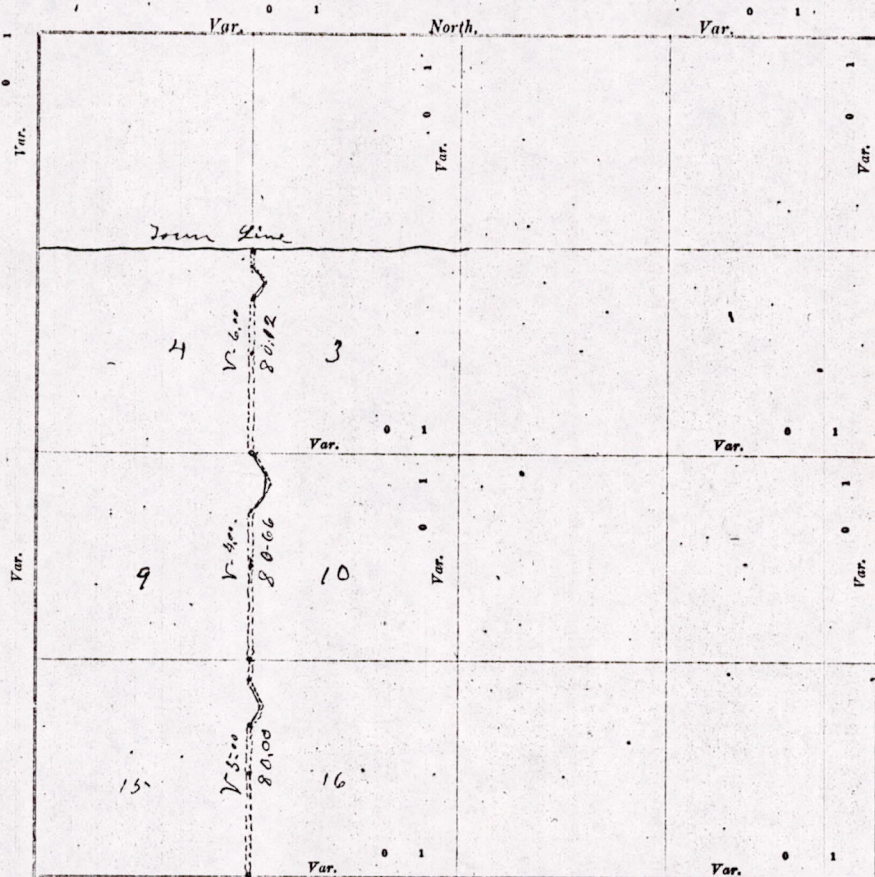


# CERTIFICATE OF SURVEY.

STATE OF WISCONSIN, }  
ADAMS COUNTY. }

*M. G. Smith* Deputy Surveyor, in and for the County and State aforesaid, do hereby certify that I have surveyed and subdivided Section 4, 3, 9, 10, 15, 16 Township 19, North of Range 5 East of 4 Principal Meridian, as represented by the courses and distances on the following plat, and annexed field-notes of survey:  
Established the center of the section at the point of intersection of straight quarter lines.  
Established all quarter-quarter corners upon the section boundary at proportional distances between known section and quarter section corners, according to the original field-notes of the Government survey.  
Established all lost corners at proportionate distances between known corners, according to original field-notes of the Government survey.



Plat of Section Highway in, Township 19 North, Range 5 East of 4 Principal Meridian. Scale, 80 chains to 0 inches. The figures in red ink are the lengths of the lines as stated in the field-notes of the Government survey.  
Declination of the Magnetic Meridian from the True Meridian \_\_\_\_\_ East.  
Surveyed and subdivided Rich 3rd A. D. 1902, in accordance with the State Laws and Instructions of the Commissioner of the General Land Office, and recorded on pages \_\_\_\_\_ of Register in the County Surveyor's office.  
WITNESS my hand this 3rd day of Feb A. D. 1902

*M. G. Smith* Deputy Surveyor.

The above is a Plat of a Highway, surveyed by order of the Town Board of Monroe F. W. Ross & Son. Starting at the identified corner of sections 15-16-21-22 and running North at 5° 00' V to a Post 10 chains North of 4 Post thence N 34° East 3-77 to Post thence N 31° W 4 chains to Post thence North to section corner of 9-10-15-16 Distance 80 chains, thence North on section line between sections 9-10 at 4° V Distance 80-66. Set Post 20 chains south of N-E corner of section 9 from which an angle was made North 41° E - 3 chains thence North 2° chains, thence N-32° W 3 chains & 25 links to section corner of 9-10-3-4, corner identified, thence North at 6° V to Town line Distance 80-12, set Post 20 chain North of 4 Post. From which an angle was made North 22° E - 3 chains, thence North 31° W - 4 chains to section line, then North on section line to town line.

Sworn Chairman *F. W. Ross & Son*

*M. G. Smith* Deputy Co. Surveyor.

MIS 16190500002