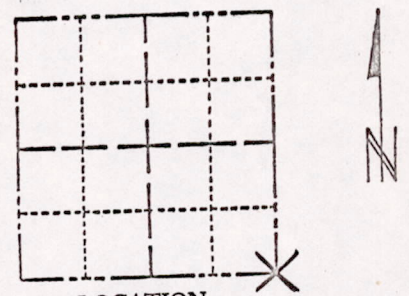


ADAMS COUNTY
Survey Monument Record

CORNER NO. 318
 SECTION 25
 TOWN 19
 RANGE 5

TYPE OF MONUMENT: 30" HARRISON
 STATE PLANE COORDINATES: N _____
 E _____
 ELEVATION — M.S.L. DATUM: _____
 THETA ANGLE: _____
 FIELD BOOK: 108 PAGE 103



LOCATION
 (Indicated by 'X')

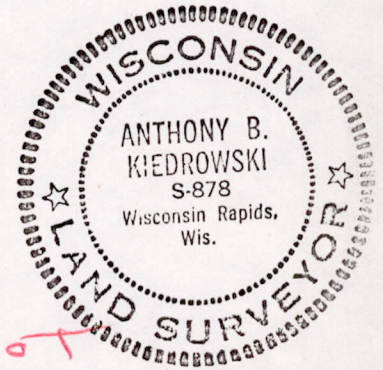
BASIS FOR MONUMENT LOCATION

(Use reverse side if necessary)
 Show info such as: History of corner, with reference to Vol. and pg, dates, surveyor; exact description of monument replaced; if location computed, by taped or EDM traverse; landowner remarks, etc.

Excavated area with backhoe and found a 2"x4"x8" stone with a sleigh shoe alongside. Lowered stone and shoe and put Harrison monument on top. Witnessed by R. Wennerstrom.

*Stone set by G W Sevens
 Oct 2, 1935 per notes
 found in Wood County
 Records (Sevens was
 Wood Co. Surveyor)*

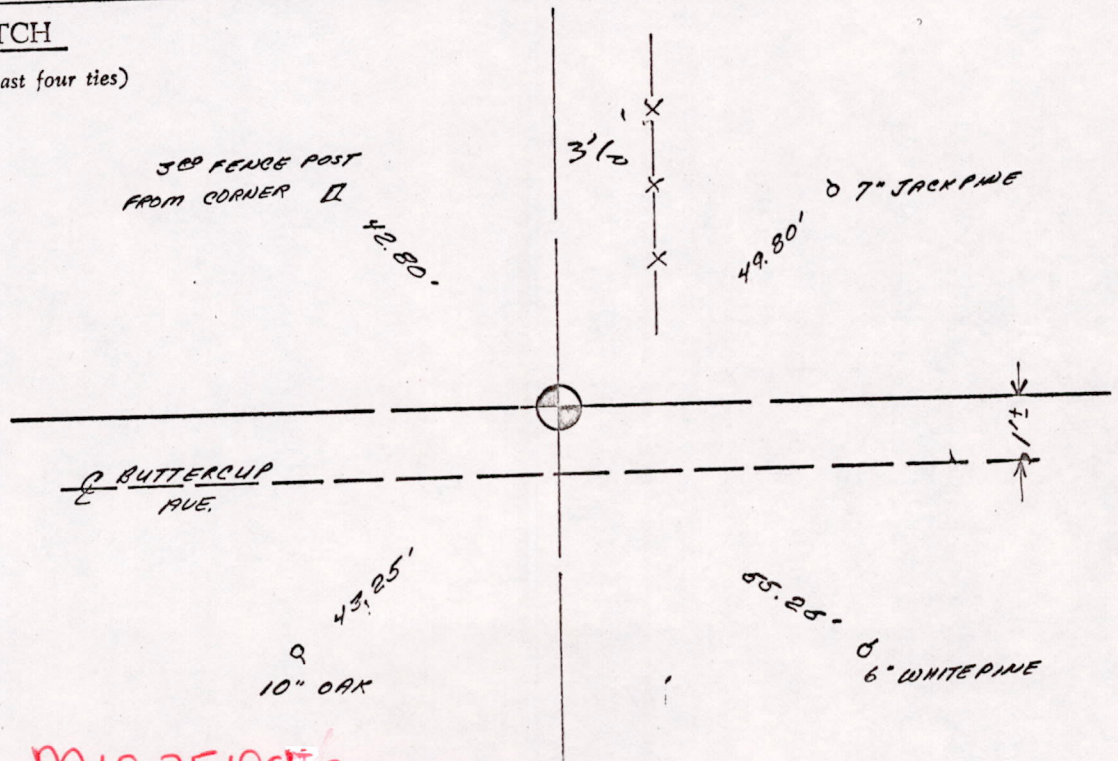
SEAL:



SCOT
Add this note to Orig. The Sket
 CERTIFIED CORRECT:
Anthony B. Kiedrowski
 Registered Land Surveyor
 DATE: 12-19-73

TIE SKETCH

(Show at least four ties)



MIS 25190500001