

ADAMS COUNTY

Survey Monument Record

TYPE OF MONUMENT: 1 1/4" Iron Shaft

STATE PLANE COORDINATES: N _____
E _____

ELEVATION — M.S.L. DATUM: _____

THETA ANGLE: _____

FIELD BOOK: 49 PAGE 1

Drafted by R. Nuber

BASIS FOR MONUMENT LOCATION

(Use reverse side if necessary)

Show info such as: History of corner, with reference to Vol. and pg, dates, surveyor; exact description of monument replaced; if location computed, by taped or EDM traverse; landowner remarks, etc.

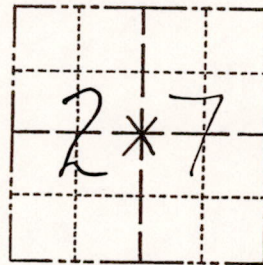
Found 1 1/4" Iron Bar as called for by M. C. Smith in Vol. 1 Pg. 181 of the Adams County Surveyor Records.

CORNER NO. _____

SECTION 27

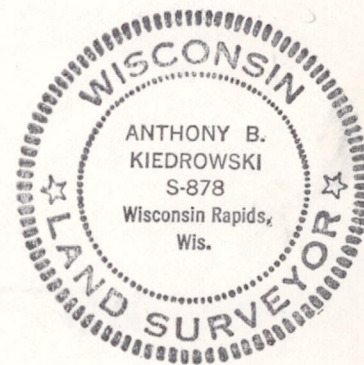
TOWN 19

RANGE 5



LOCATION
(Indicated by 'X')

SEAL:



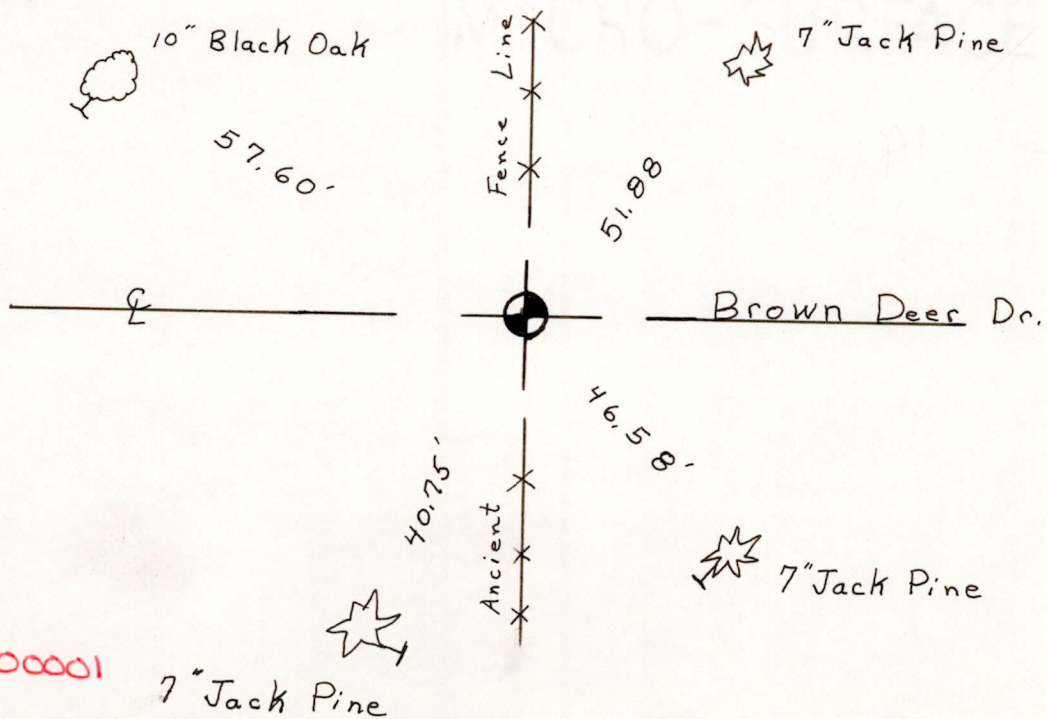
CERTIFIED CORRECT:

Anthony B. Kiedrowski
Registered Land Surveyor

DATE: Sept. 6, 1977

TIE SKETCH

(Show at least four ties)



MIS 27190500001