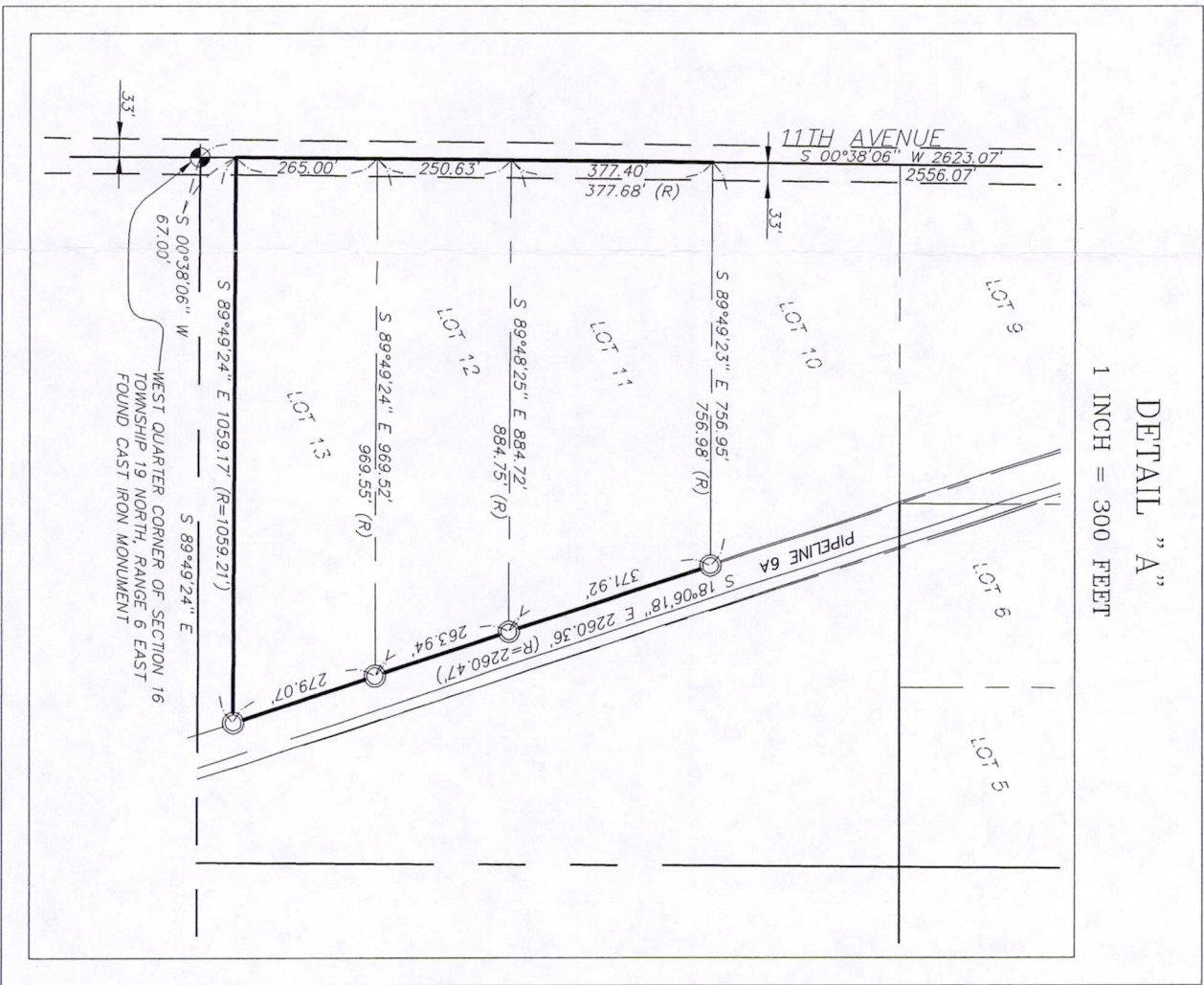
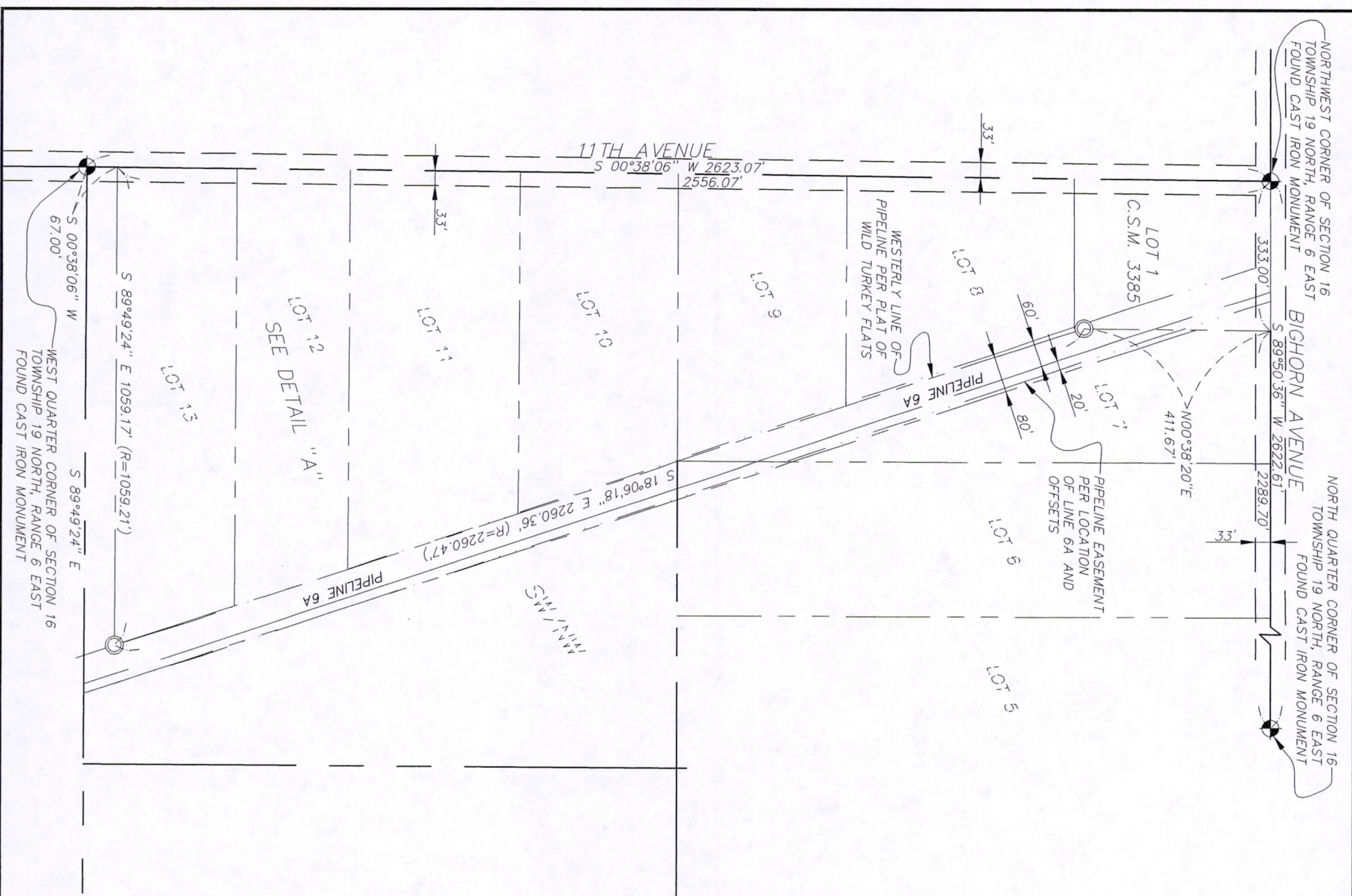


Map of Survey
PREPARED FOR ENBRIDGE PIPELINE INC.
Lots 11-13 of Wild Turkey Flats, Town of Big Flats
Adams County, Wisconsin



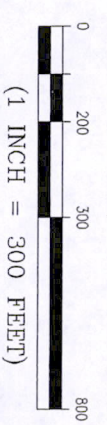
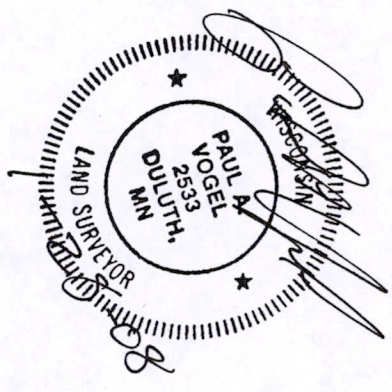
DETAIL "A"
 1 INCH = 300 FEET

SURVEYOR'S NOTE

1. LOCATION OF PIPELINE DOES NOT MATCH WRITTEN DESCRIPTION OF EASEMENT RECORDED IN VOL. 163 PAGE 465 AND ACCOMPANYING MAP FOR ENBRIDGE PIPELINE (I.E. LAKEHEAD PIPELINE COMPANY INC.) AS PREPARED BY WILEY H. HATCHER RLS 923 DATED 6-20-68.

LEGEND

- = PROPERTY LINE, this survey
- - - = EASEMENT LINE
- = SET 3/4" x 24" REBAR WEIGHING 1.502 LBS/L.F. W/CAP S-2533
- (R) = RECORD DATA



Bearing are referenced to the Wisconsin State Plane Coordinate System, South - NAD 83.



COPYRIGHT 2008 BY LHB, INC. ALL RIGHTS RESERVED.

I hereby certify that this survey was prepared under my direction and control and it conforms to A-E7 Minimum Standards for Property Surveys to the best of my knowledge and belief.

Registered Land Surveyor S-25333

Date: 1/24/2008

Paul A. Vogel

DATE PREPARED: 12/4/08	DULUTH 21 W. Superior Street Suite 500 Duluth, MN 55802	MINNEAPOLIS 250 Third Avenue North Suite 450 Minneapolis, MN 55401
LHB No.: 070609	TEL: 218/727-8446 FAX: 218/727-8456	TEL: 612/338-2029 FAX: 612/338-2088 http://www.LHBcorp.com
FILE: W-314-G.dwg		
SHEET 1 of 1 SHEETS		



Pos 16190621002