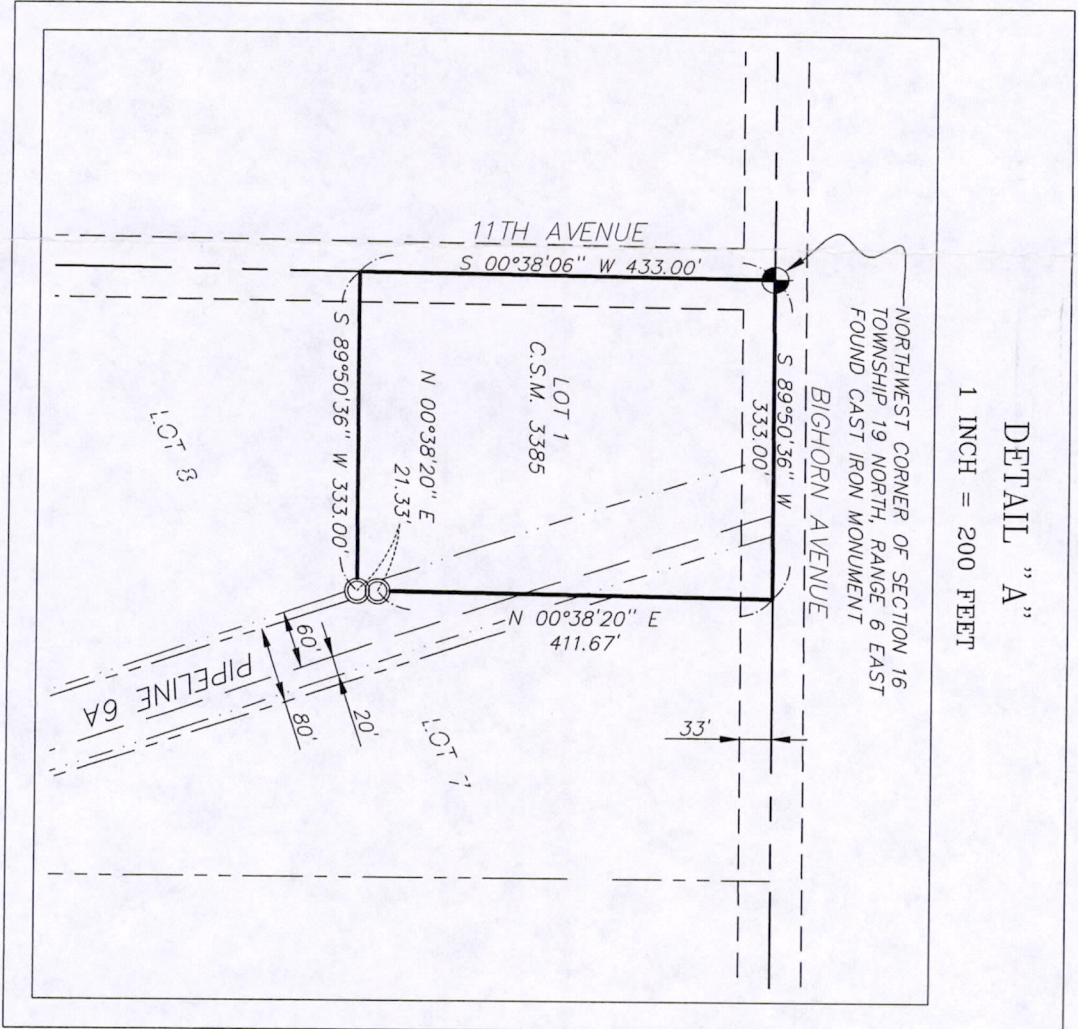
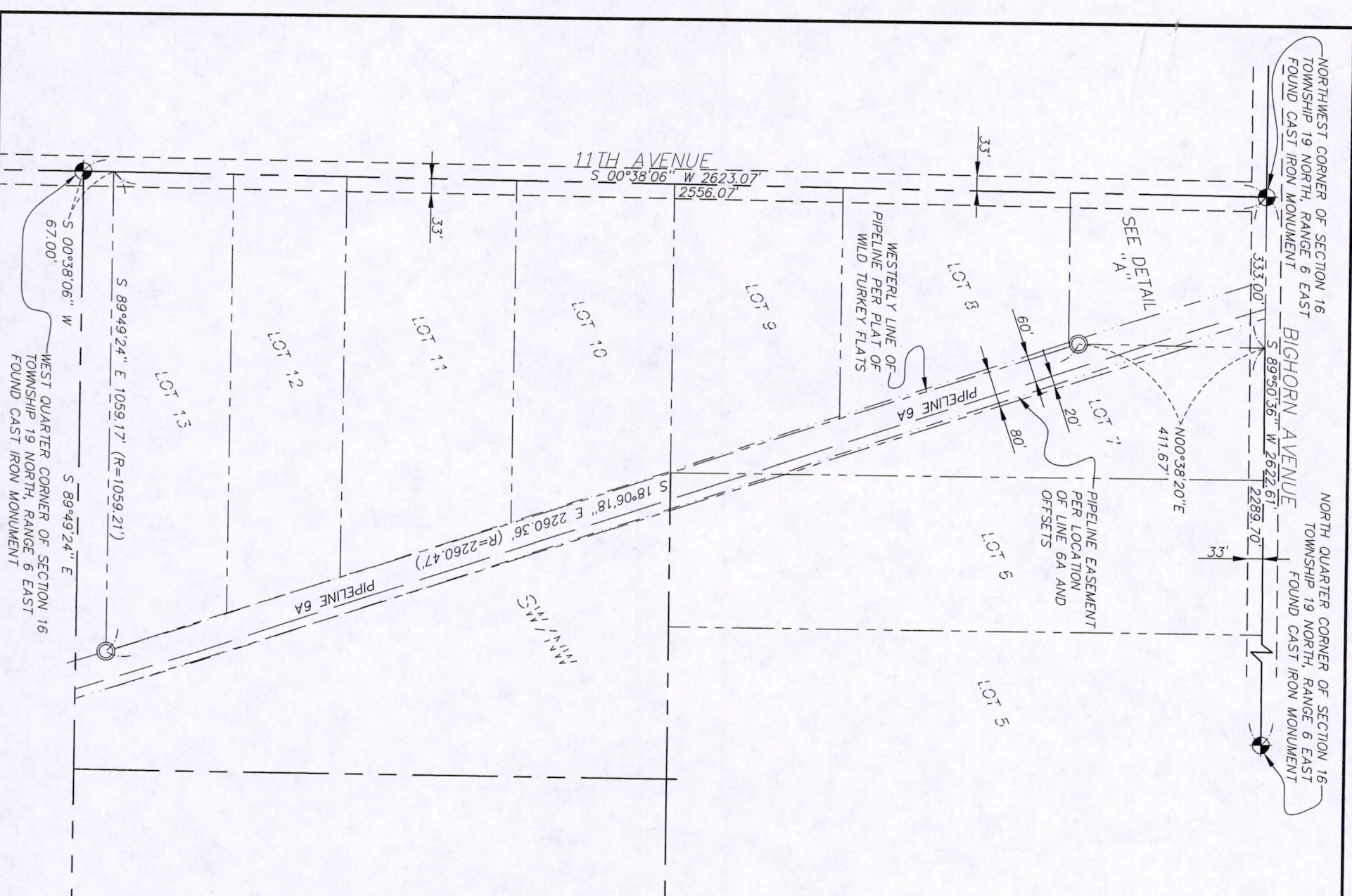


Map of Survey

ENBRIDGE PIPELINE INC.

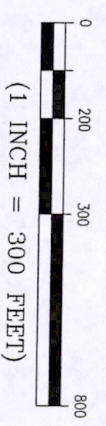
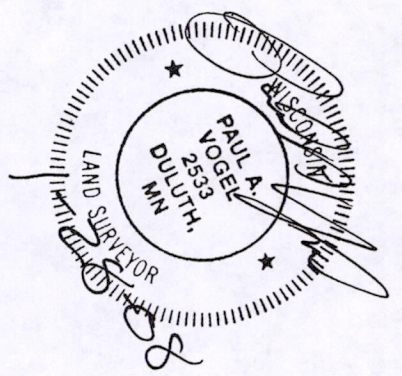
Lot 1 C.S.M. 3385
Adams County, Wisconsin



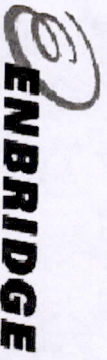
SURVEYOR'S NOTE

1. LOCATION OF PIPELINE DOES NOT MATCH WRITTEN DESCRIPTION OF EASEMENT RECORDED IN VOL. 163 PAGE 465 AND ACCOMPANYING MAP FOR ENBRIDGE PIPELINE (i.e. LAKEHEAD PIPELINE COMPANY INC.) AS PREPARED BY WILEY H. HATCHER RLS 923 DATED 6-20-68.

- LEGEND**
- = PROPERTY LINE, this survey
 - - - = EASEMENT LINE
 - = SET 3/4" x 24" REBAR WEIGHING 1.502 LBS/L.F. W/CAP S-2533
 - (R) = RECORD DATA



Bearing are referenced to the Wisconsin State Plane Coordinate System, South - MAD 83.



COPYRIGHT 2008 BY LHB, INC. ALL RIGHTS RESERVED.

I hereby certify that this survey was prepared under my direction and control and it conforms to A-E7 Minimum Standards for Property Surveys to the best of my knowledge and belief.

Registered Land Surveyor S-25333
Date: 1/24/2008

DATE PREPARED: 1/24/08	DULUTH	MINNEAPOLIS
LHB No.: 070609	21 W. Superior Street Suite 500 Duluth, MN 55802	280 Third Avenue North Suite 450 Minneapolis, MN 55401
FILE: W-314-1B.dwg	TEL 218177-9446 FAX 218177-9456	TEL 612338-2029 FAX 612338-2088 http://www.LHBcorp.com
SHEET 1 of 1 SHEETS		

Possible 190621003