

Scale 1" = 200'



LEGEND:

- HARRISON CAST IRON MONUMENT FOUND
- 3/4" x 24" REBAR SET - 1.502 LB/FT.
- 3/4" ROD FOUND
- 1" O.D. PIPE FOUND
- ▲ 1" POST SET
- PREVIOUSLY RECORDED AS (2003)
- P.O.B. POINT OF BEGINNING
- P.O.C. POINT OF COMMENCEMENT

BASIS FOR BEARINGS:

THE EAST LINE OF THE SE1/4, SECTION 18, T19N, R6E, ASSUMED TO BEAR S00°09'43"W.

Description:

PART OF THE SE1/4, SECTION 18, T19N, R6E, TOWN OF BIG FLATS, ADAMS COUNTY, WISCONSIN, COMMENCING AT THE HARRISON CAST IRON MONUMENT ON THE SOUTHEAST CORNER SECTION 18; THENCE S88°56'05"W ALONG THE SOUTH LINE OF SECTION 18 AND THE CENTERLINE OF COUNTY ROAD "C", 1055.53 FEET TO THE SOUTHEAST CORNER OF CSM 4955 AND THE POINT OF BEGINNING OF THE FOLLOWING DESCRIPTION; THENCE N00°16'41"E ALONG THE EAST LINE OF CSM 4955, 33.01 FEET TO ROD ON THE NORTH LINE OF COUNTY ROAD "C"; THENCE CONTINUE N00°16'41"E ALONG THE EAST LINE OF CSM 4955, 132.00 FEET TO ROD ON A CORNER OF SAID CSM 4955; THENCE S88°56'05"W ALONG THE NORTHERLY LINE OF CSM 4955, 264.00 FEET TO ROD ON THE 1/4 LINE AND A CORNER OF SAID CSM 4955; THENCE N00°16'41"E ALONG THE 1/4 LINE AND THE EASTERLY LINE OF CSM 4955 AND IT'S PROLONGATION THEREOF, 1169.77 FEET TO REBAR ON THE 1/4 CORNER; THENCE N89°19'15"E ALONG THE 1/4 LINE AND THE SOUTH LINE OF CSM 3660, 1283.67 FEET TO A ROD ON THE WEST LINE OF 13TH AVENUE; THENCE CONTINUE N89°19'16"E ALONG THE 1/4 LINE, 33.00 FEET TO A PIPE ON THE 1/4 CORNER AND THE TERMINUS OF THIS LINE SURVEY;

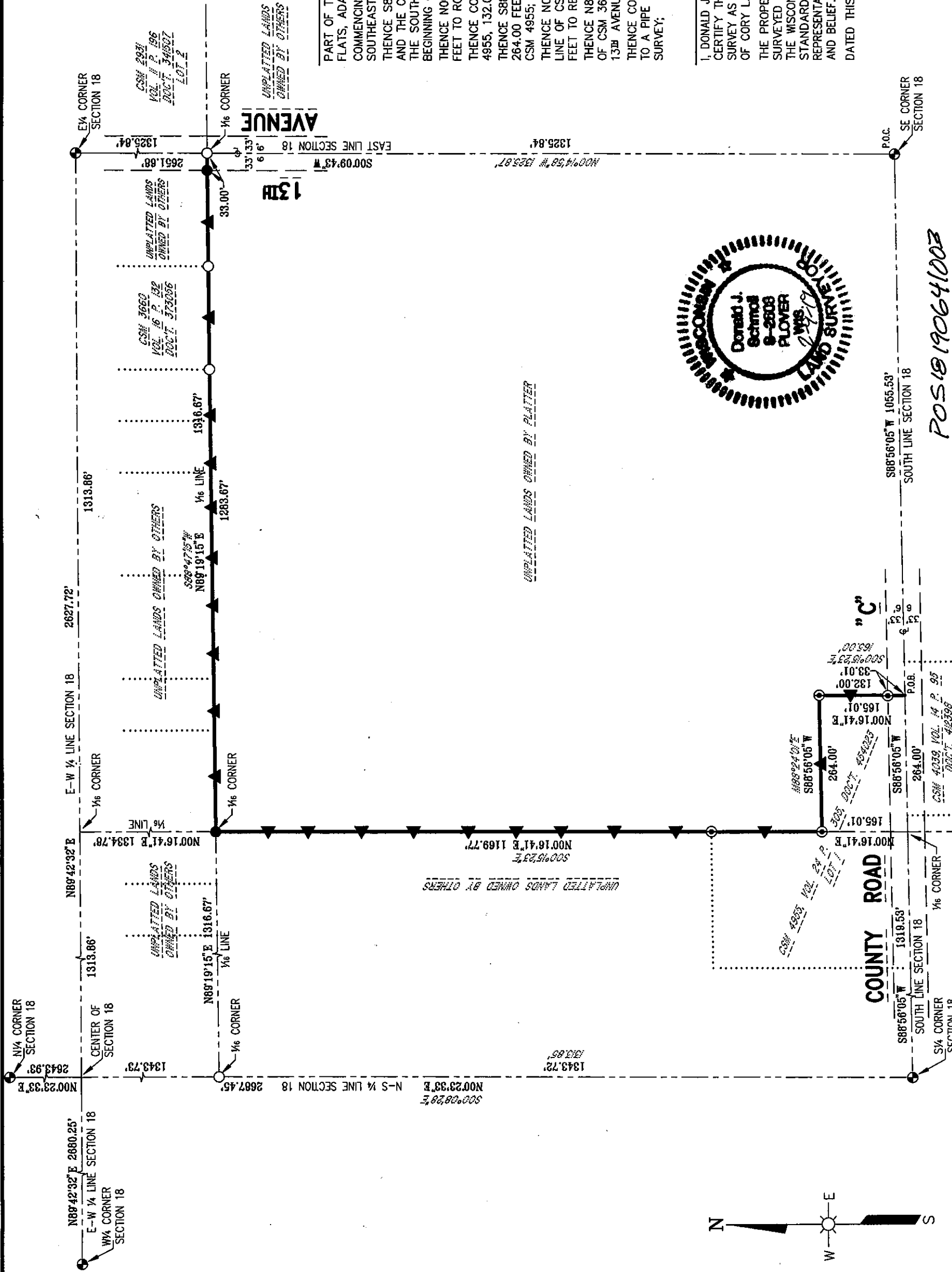
Surveyor's Certificate:

I, DONALD J. SCHMOLL, PROFESSIONAL LAND SURVEYOR, DO HEREBY CERTIFY THAT THIS IS A TRUE & CORRECT COPY OF A LINE SURVEY AS MADE BY ME ON FEBRUARY 9, 2019, BY THE DIRECTION OF CORY L. HILLER.

THE PROPERTY AS SHOWN AND DESCRIBED ON THIS MAP WAS SURVEYED UNDER MY DIRECTION AND CONTROL ACCORDING TO THE WISCONSIN ADMINISTRATIVE CODE CHAPTER A-17, MINIMUM STANDARDS FOR PROPERTY SURVEYS, AND IS A CORRECT REPRESENTATION OF SAID SURVEY, TO THE BEST OF MY KNOWLEDGE AND BELIEF.

DATED THIS 9TH DAY OF FEBRUARY, 2019.

Donald J. Schmoll
DONALD J. SCHMOLL, PLS-2608
PROFESSIONAL LAND SURVEYOR



POS 18 190641003