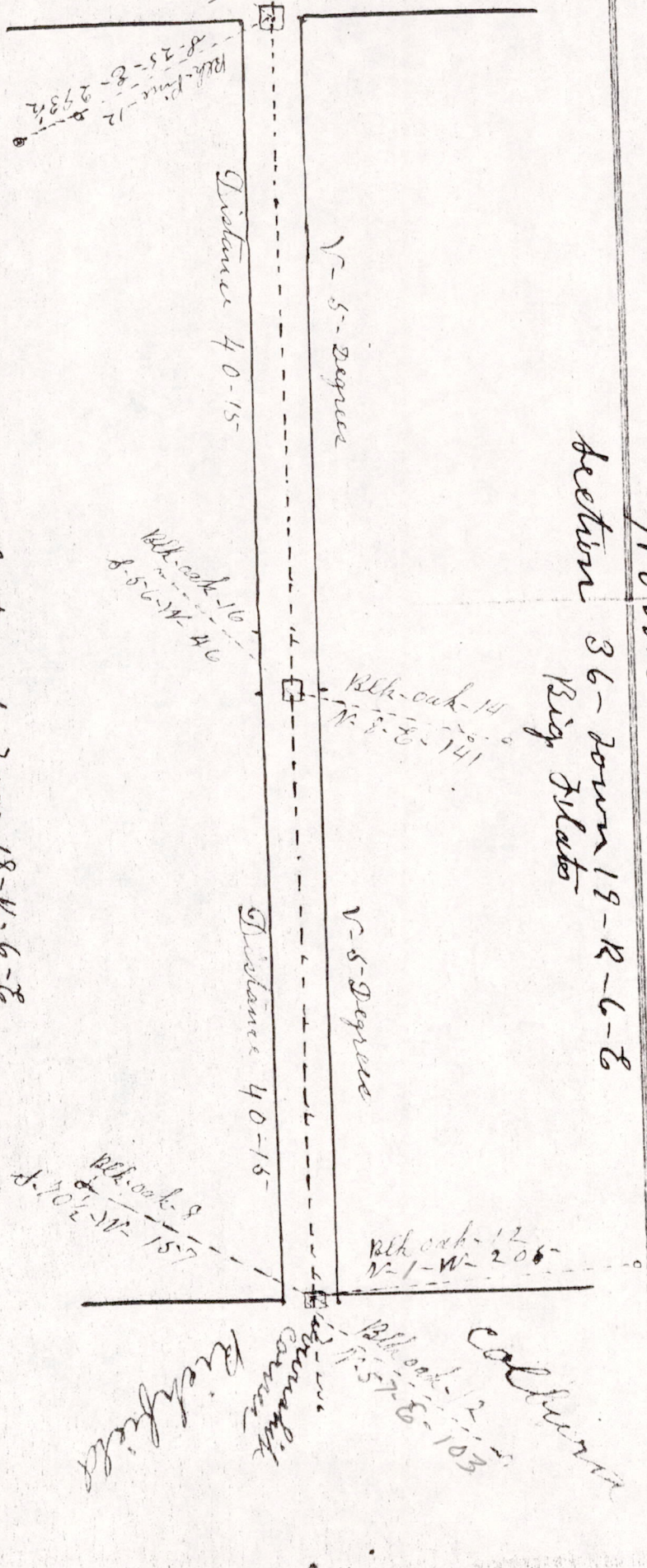


North

Section 36 - Town 19-R-6-E
Big Bluffs



Section 1 - Town 18-N-6-E
Preator

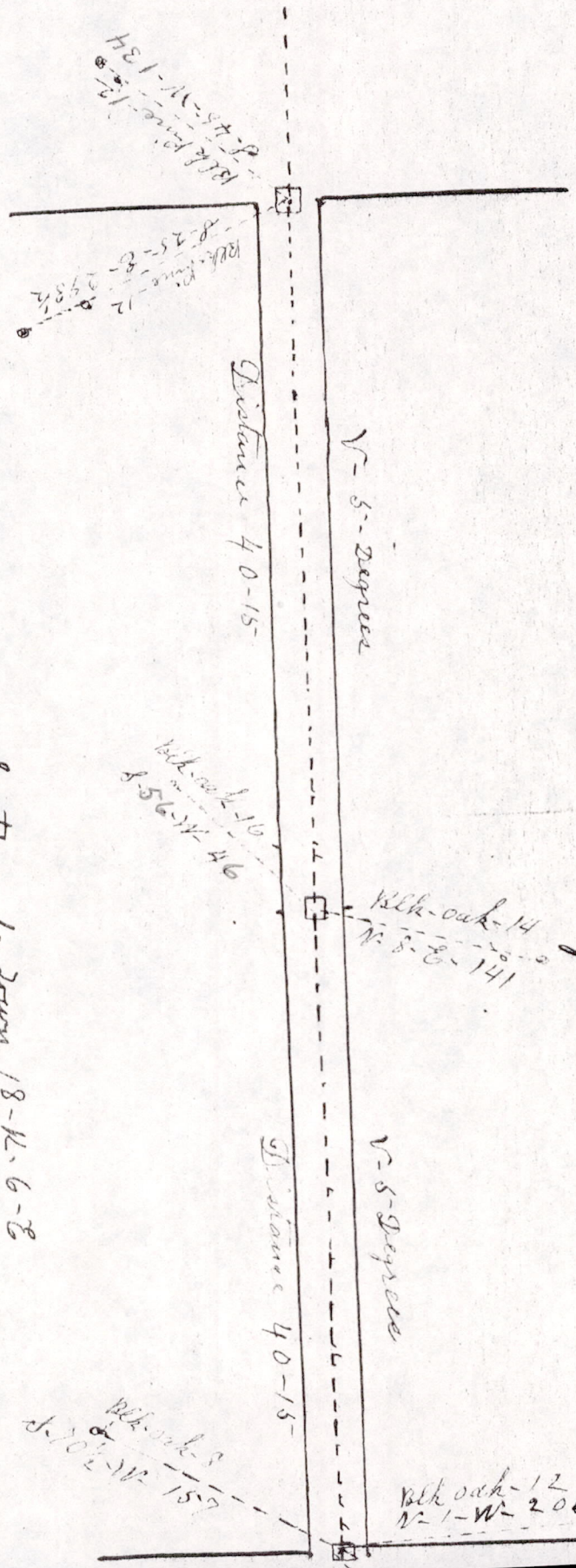
Part of Highway between sections 36 in Big Bluffs and Section 1 in Preator. on the town line. together with course - distance - action & bearings, and is correct, as surveyed by me on the 7th of September 1909

RS 36190641001

M. L. Smith (Surveyor)

North

Section 36 - Town 19-R-6-E
Big Flats



Section 1 - Town 18-N-6-E
Preston

Plot of Highway between Section 36 in Big Flats
one in Preston. on the town line. together with course-
variation & bearings; and is correct, as surveyed by me on
day of September 1909
W. L. Smith - Surveyor

Filed in my office on Sep 28th 1911
O. L. Johnson
County Clerk

Pos 36190641001