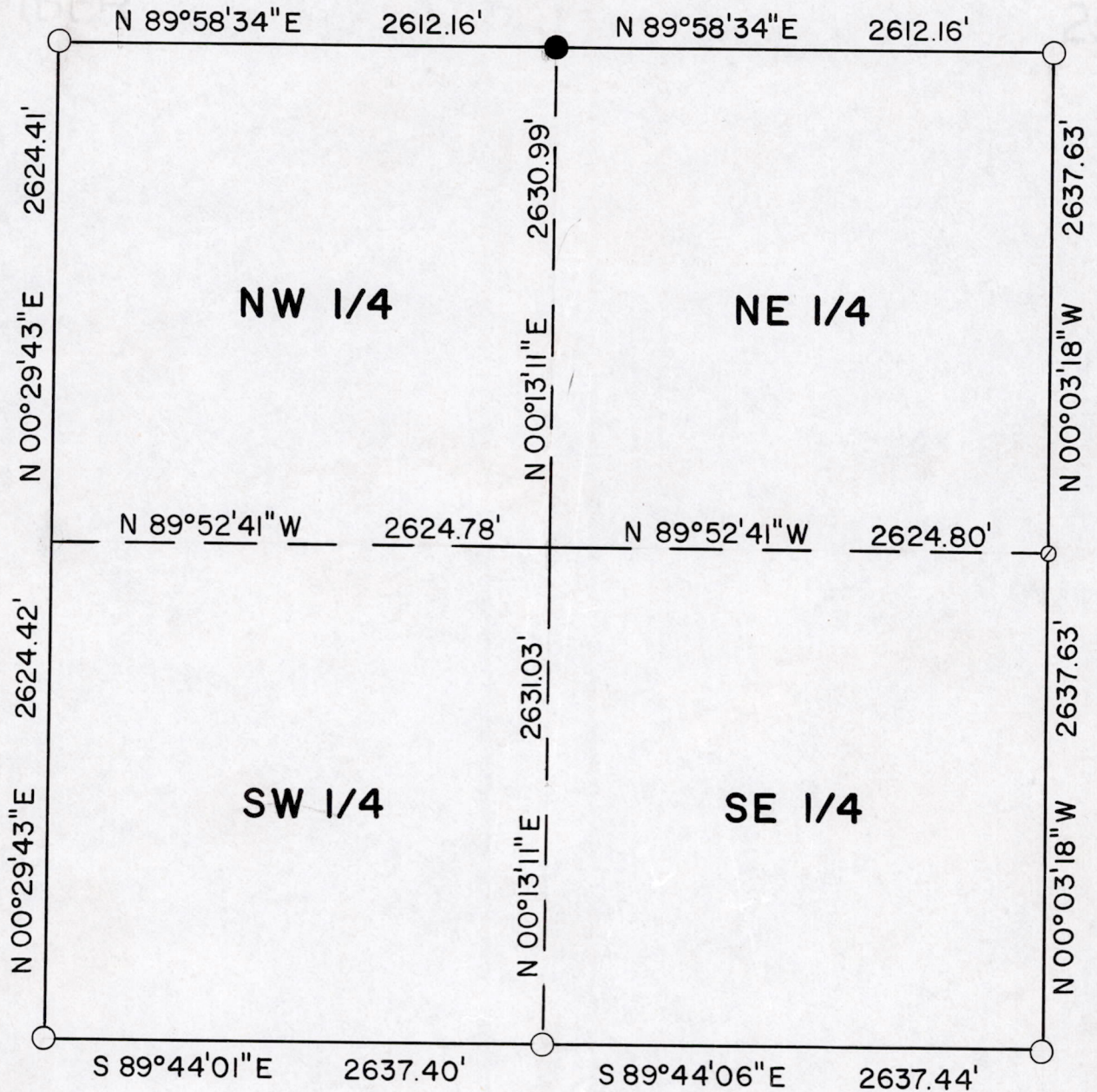
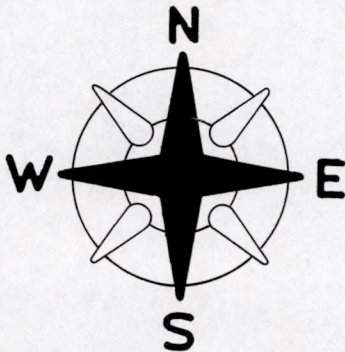


Section 35-T19N-R6E,
Town of Big Flats,
Adams County, Wisconsin



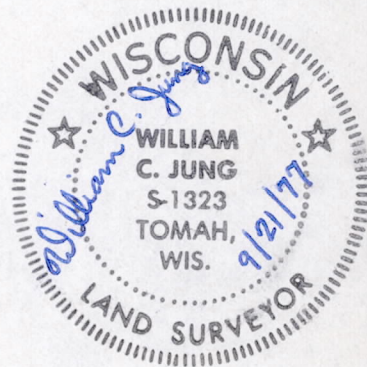
September 21, 1977



ASSUMED NORTH

- = Existing Harrison Monument
- = Set Harrison Monument
- ⊙ = Set 2½" x 7' iron pipe

(NO SCALE)



Sec 35190600001

(This data is to be filed with the Adams County Surveyor's Office.)