

CERTIFICATE OF SURVEY.

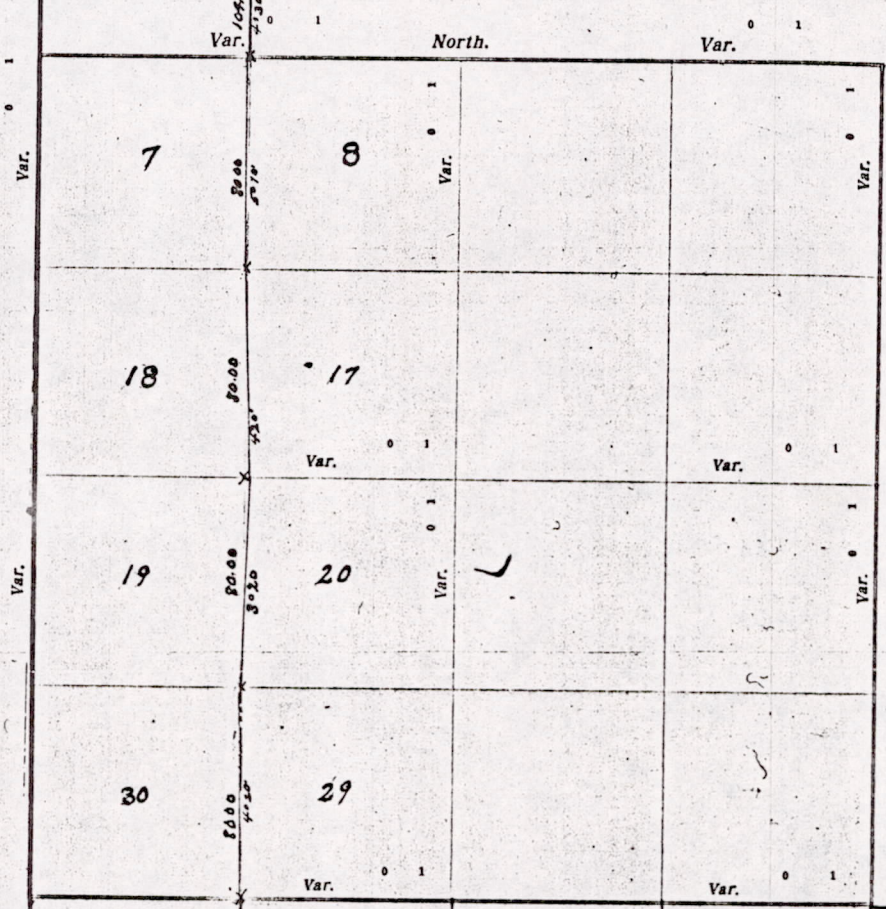
STATE OF WISCONSIN
ADAMS COUNTY.

State 4442173

Raymond Phillips

Surveyor, in and for the County and State aforesaid.

hereby certify that I have surveyed and subdivided Section 20 Township 20 North of Range 7 East of 4 Principal Meridian, as represented by the courses and distances on the following plat, and annexed field-notes of survey: Established the center of the section at the point of intersection of straight quarter lines. Established all quarter-quarter corners upon the section boundary at proportional distances between known section and quarter section corners, according to the original field-notes of the Government survey. Established all lost corners at proportional distances between known corners, according to original field-notes of the Government survey.



Plat of Section 20 Township 20 North, Range 7 East of 4 Principal Meridian. Scale, 80 chains to 4 inches. The figures in red ink are the lengths of the lines as stated in the field-notes of the Government survey.

Declination of the Magnetic Meridian from the True Meridian East 33
Surveyed and subdivided 31 32 24 A. D. 1940 33 in accordance with the State Laws and Instructions of the Commissioner of the General Land Office, and recorded on pages 34 35 of Register in the County Surveyor's office.

WITNESS my hand this 24 day of May A. D. 1940.

Raymond Phillips SURVEYOR

Survey of Town Road Town of Leola. Ordered by the Town Board. John Kraemer
Chairman. Surveyed April 23, 24, 25, 26, 27, 30 May 1, 13, 14, 15, 16, 17, 18. 1940

Bearings to 31-32-5-6
 A mound Bearing Red Oak Post surrounded by Stones S49°W.65 links
 Corner: Well Point surrounded by stones Section Corner
 A mound Bearing Red Oak Post surrounded by Stones N52°15' E 100 links.

Bearings to 29-30-31-32
 A mound Bearings: Red Oak Post surrounded by stone on top of ditch bank S35°W.81 links
 Corner: Lathrops Stone Section Corner
 A mound Bearing Red Oak Post surrounded by Stone N.66W 100 links

Bearings to 19-20-29-30
 A mound: Post surrounded by stones N4°30'W 304 links
 Corner: 1" x 4" Pipe surrounded by Stone
 A mound: Post surrounded by stones S3°W 504 links

See Page 165 For corners North

M1505190700003

DESCRIPTION of Section, Quarter Section and Quarter-quarter Section Corners of Section

Township _____ North, Range _____ East of _____ Principal Meridian.

164

N. B.—The variation of needle adopted in establishing corners is _____

No.	Government Corners	Bearing Trees	In. dia.	Course they bear	Links Distant	Bearing Trees	In. dia.	Course they bear	Links Distant
1	N. W. Sec. cor. Identified								
2	N. E. Sec. cor. Identified								
3	S. E. Sec. cor. Identified								
4	S. W. Sec. cor. Identified								
5	N. ¼ Sec. cor. Identified								
6	E. ¼ Sec. cor. Identified								
7	S. ¼ Sec. cor. Identified								
8	W. ¼ Sec. cor. Identified								
No. SUBDIVISION CORNERS.									
1	Center ¼ Sec. cor.								
2	North ¼-¼s N. W. qr.								
3	East ¼-¼s N. W. qr.								
4	South ¼-¼s N. W. qr.								
5	West ¼-¼s N. W. qr.								
6	Center ¼-¼s N. W. qr.								
7	North ¼-¼s N. E. qr.								
8	East ¼-¼s N. E. qr.								
9	South ¼-¼s N. E. qr.								
10	Center ¼-¼s N. E. qr.								
11	East ¼-¼s S. E. qr.								
12	South ¼-¼s S. E. qr.								
13	West ¼-¼s S. E. qr.								
14	Center ¼-¼s S. E. qr.								
15	South ¼-¼s S. W. qr.								
16	West ¼-¼s S. W. qr.								
17	Center ¼-¼s S. W. qr.								

NAMES OF SWORN ASSISTANTS.

CHAINMEN

FLAGMEN

AXMEN

John Nelson
Robert Meagher

MINUTES.

Commence survey at section corner of 293, 34 and 35 between Townships 19, 20 North, Range 7 East of 4 P.M. Take bearings Black Oak 8° 59' 30" E 139 Links; Black Oak 9° 51' 30" S 55 Links, a hard Cobble stone 8" diam. point up, set in North wheel Track of highway running East and West and Center of North and South highway. Chained West 80.00 chains set stake on random (did not correct) continued West 80.00 chains more North and highway. Thence West 40.21 chains Smith's ¼ corner, his bearing tree still standing, Black Oak N 53° 10' W 59 Links Grew about 4 inches, at this point; find random 15' to the south, continue on West with the 80.00 chains intersect Nand's road Continue West on Random 57.40 Rocka Cree Creek. A Beaver Dam two years old about 15 rods North. At this time Mr Martin Mosher unearths the North West corner of Section 32, This corner was set by Surveyor Lathrop 40 years ago, we also found the north ¼ corner West side of S. 32. and took bearings (Lathrop ¼ corner New bearings Jack Pine 10 S 21° West 122 chains; Black Oak 11 N 89° 30' E 90 Links). The total length of the West side of section 32 is 80.01 chains. Commence survey for new local road at the South West Corner of Section 32. Section line on West side of 32 being the center line of the road Var 4°. Thence North to the North West corner of Section 32. Thence North Var 4° 20' 50 min center private property 14.40 chains center of ditch 80.00 over a ditch 80.00 Section Corner; Thence North Var. 3° 20' 40.00 Fence on line 80.00 South Bank of ditch Section corner to 17-18-19-20; Thence North Var 4° 20' 20.00 South Margin of east and west road 80.00 chains Section Corner to 7-8-17-18. In center of East and West ditch. At this corner Willis Kurth runs a line from the Range line between Ranges 6 & 7 corner to 7-12-13-19, (finds a stone for corner) East 75.44 chains per Government field notes and was 5 3/4 links short of closing with my North and South Random Mr Kurth continued the line East and took note of previously established points and the corner closed at 75.88 1/2; Thence north 80.00 chains Var. 5° 10' North side of ditch, corner to 5-6-7-8; Thence North 4° 30' Var. 104.81 chains center of State Highway No. 73

MIS 05190700003

CHAIRMEN

FLAGMEN

AXMEN

John Nelson
Robert Ferguson

MINUTES.

36

Commence survey at section corner of 293, 34 and 35 between Townships 19 & 20 North Range East of 4 P.M. Take bearings Black Oak 8" 559°30'E / 394 links :: Black Oak 9" S 13°30' 55 links, a hard Cobble Stone 8" diam. point up, set in North wheel Track of highway running East and West and Center of North and South highway. Chained West 80.00 chains set stake on Random (did not correct) continued West 80.00 chains more North and ^{South} highway. Thence West 40.31 chains Smiths ^{1/2} year corner, his bearing Dec Still standing. Black Oak N 53°10' W 59 links Grew about 4 inches, at this point find Random 157ks south, continue on West with the 80.00 chains intersect N and S road Continue West on Random 57.40 Rocka Cree Creek. A Beaver Dam Two years old about 15 rods North. At this time Mr Martin Mosher unearthed the North West corner of Section 32. This corner was set by Surveyor Hathrop 40 years ago, we also found the north ^{1/2} corner West side of S. 32. and Took bearings (Hathrop ^{1/2} corner New bearings Jack Pine 10 S 21° West 122 chains :: Black Oak 11 N 89°30' E 90 links). The total length of the West side of Section 32 is 80.01 chains. Commence survey for new road at the South West Corner of Section 32. Section line on West side of 32 being the center line of the road Var. 4°. Thence North to the North West corner of Section 32. Thence North Var 4° 20' 50 links center private property: 14.40 chains center of ditch 80.00 over a ditch 80.00 Section Corner; Thence North Var. 3° 20' 40.00 Fence on line 80.00 South Bank of ditch Section corner to 17-18-19-20. Thence North Var 4° 20' 20.00 South Margin of east and west road 80.00 chains Section Corner to 7-8-17-18. Thence North Var 4° 20' ditch. At this corner Willis Kurth runs a line from the Range line between Ranges 697 corner to 7-12-13-19, finds a stone for corner East 75.44 chains per Government field notes and was 5 1/2 links short of closing with my North and South Random Mr Kurth continued the line east and took note of previously established points and the corner closed at 75.88 1/2 :: Thence north 80.00 chains Var. 5° 10' North side of ditch, corner to 5-6-7-8. :: Thence North 4° 30' Var. 104' 81 chains center of State Highway No. 73

MISO 5190700003

30

29

8000
4020

Var. 0 1

Var. 0 1

Plat of Section _____ Township _____

North, Range _____

East of _____

Principal Meridian. Scale, 80 chains to 6

inches. The figures in red ink are the lengths of the lines as stated in the field-notes of the Government survey.

Declination of the Magnetic Meridian from the True Meridian _____

Surveyed and subdivided _____

31

32

24

33

A. D. 1940

34

in accordance with the State Laws and Instructions of _____

35

of Register in the County Surveyor's office.

36

the Commissioner of the General Land Office, and recorded on pages _____

WITNESS my hand this _____

_____ day of _____

24

May

1940

A. D. 1940

A. D. 1940

Raymond Phillips

Surveyor.

Survey of Town Road Town of Leola. Ordered by the Town Board. John Kraemer

Chartman. Surveyed April 23, 24, 25, 26, 27, 30 May 1, 13, 14, 15, 16, 17, 18. 1940

Bearings to 31-32-5-6

Mound Bearing Red Oak Post Surrounded by Stones 84° 9' W. 65 links.

Corner: Well Point Surrounded by Stones Section Corner

Mound Bearing Red Oak Post Surrounded by Stones N 82° 15' E 100 links.

Bearings to 29-30-31-32

Mound Bearings: Red Oak Post surrounded by stone on top of ditch bank S 35° W. 81 links

Corner: Kathrops Stone Section Corner

Mound Bearing Red Oak Post surrounded by stone N 46° W 100 links

Bearings to 19-20-29-30

Mound: Post surrounded by stones N 4° 30' W 50 links

Corner: 1" x 4" Pipe Surrounded by Stone

Mound: Post surrounded by stones S 3° W 50 links

See page 165 for corners North

M5051907100003

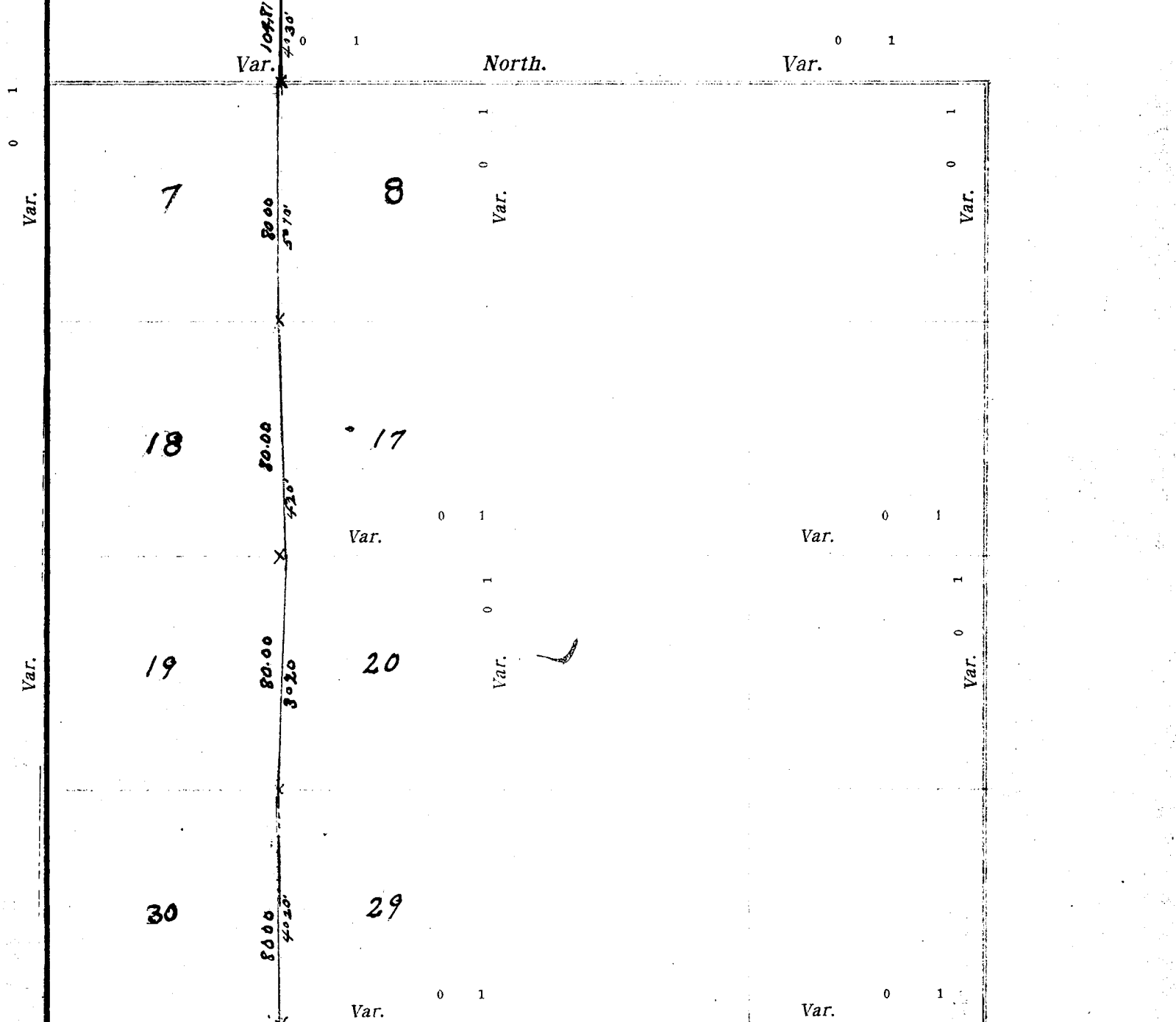
John Kraemer

STILL SET
THE 80.0
ABOUT 15'
BY SURV
NEW BEA
32 IS 80
SIDE OF
VAR 4° 20'
THENCE
20.00 S
DITCH. A
GINDS A
CLOSING
ESTABLISH
CORNER

CERTIFICATE OF SURVEY. No 12-164

WISCONSIN, State of WISCONSIN Raymond Phillips Surveyor, in and for the County and State aforesaid, do

that I have surveyed and subdivided Section 7, 8, 17, 18, 19, 20, 29, 30 Township 20 North of Range 7 East of 4 as represented by the courses and distances on the following plat, and annexed field-notes of survey: center of the section at the point of intersection of straight quarter lines. quarter-quarter corners upon the section boundary at proportional distances between known section and quarter section original field-notes of the Government survey. lost corners at proportional distances between known corners, according to original field-notes of the Government survey:



Section <u>7, 8, 17, 18, 19, 20, 29, 30</u> , Township <u>20</u> North, Range <u>7</u> East of <u>4</u> Principal Meridian. Scale, 80 chains to 6	figures in red ink are the lengths of the lines as stated in the field-notes of the Government survey.	tion of the Magnetic Meridian from the True Meridian <u>31</u> East. <u>34</u>	and subdivided <u>31</u> <u>32</u> <u>24</u> A. D. 19 <u>40</u> <u>33</u> in accordance with the State Laws and Instructions of
ner of the General Land Office, and recorded on pages <u>24</u> of Register in the County Surveyor's office.	ESS my hand this <u>24</u> day of <u>May</u> A. D. 19 <u>40</u> .		
	<u>70.00</u> 1/4 corner	<u>80.00</u>	<u>Raymond Phillips</u> Surveyor. <u>80.00</u>

Survey of Town Road Town of Leola. Ordered by the Town Board. John Kraemer
 h. Surveyed April 23, 24, 25, 26, 27, 30 May 1, 13, 14, 15, 16, 17, 18. 1940
 31-32-5-6
 Bearing Red Oak Post surrounded by Stones S 49° W. 65 links
 all Point surrounded by stones Section Corner
 Bearing Red Oak Post surrounded by Stones N 82° 15' E 100 links
 29-30-31-32
 Bearings: Red Oak Post surrounded by stone on top of ditch bank S 35° W. 81 links
 Throps stone Section Corner
 Bearing Red Oak Post surrounded by stone N. 46° W 100 links