

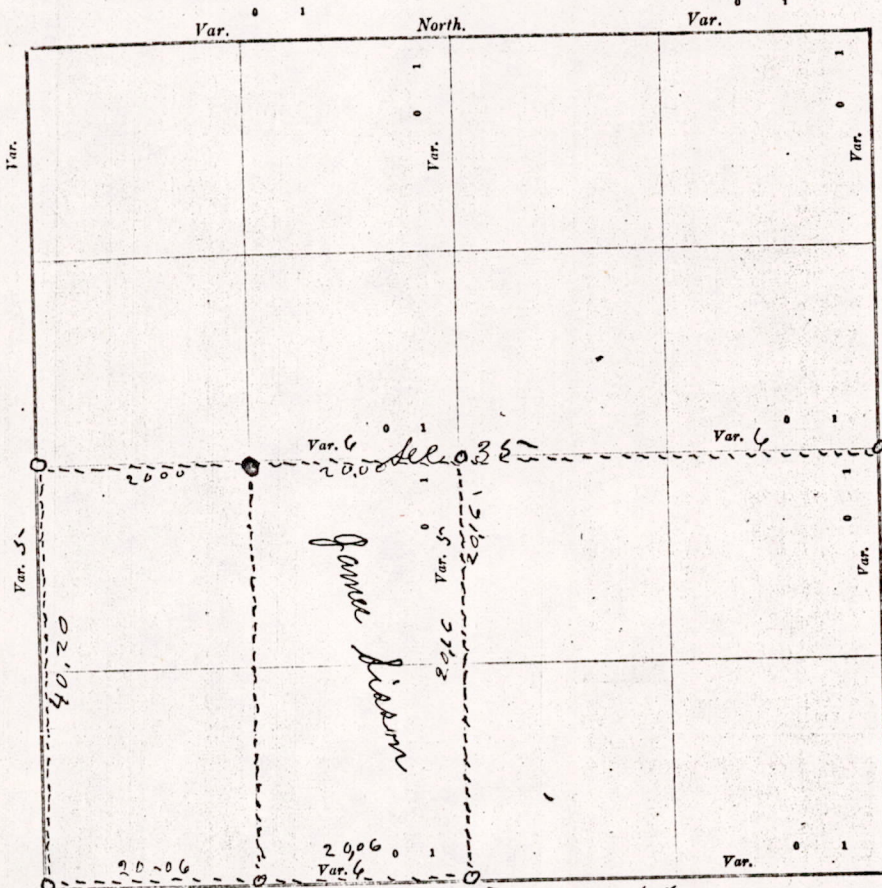
# CERTIFICATE OF SURVEY.

STATE OF WISCONSIN, }  
ADAMS COUNTY.

ss. M. L. Smith

Surveyor, in and for the County and State aforesaid, do

hereby certify that I have surveyed and subdivided Section 35 Township 19 North of Range 7 East of 4th Principal Meridian, as represented by the courses and distances on the following plat, and annexed field-notes of survey:  
Established all quarter-quarter corners upon the section boundary at proportional distances between known section and quarter section corners, according to the original field-notes of the Government survey.  
Established all lost corners at proportionate distances between known corners, according to original field-notes of the Government survey:



Plat of Section 35 Township 19 North, Range 7 East of 4th Principal Meridian. Scale, 80 chains to 6 inches. The figures in red ink are the lengths of the lines as stated in the field-notes of the Government survey.

Declination of the Magnetic Meridian from the True Meridian \_\_\_\_\_ East.  
Surveyed and subdivided March 26 A. D. 1909, in accordance with the State Laws and Instructions of

the Commissioner of the General Land Office, and recorded on pages \_\_\_\_\_ of Register in the County Surveyor's office.

WITNESS my hand this 26th day of March A. D. 1909.

M. L. Smith County Surveyor.

The above work was done for Mr James Sisson

Chas Wilson  
W Carlton  
James Sisson

Beginning at  
Town 19-R-7  
at G-S-V. 40  
35 corner iden  
to center of Sect  
section & Ran  
the west side  
then ran East  
of said section  
and stone set  
7 3rd Post at  
110' 10" W x 19'  
Sisson's lan

MIS 35190700002



DESCRIPTION of Section, Quarter Section and Quarter quarter Section Corners of Section

Township \_\_\_\_\_ North, Range \_\_\_\_\_ East of \_\_\_\_\_ Principal Meridian.

N. B. - The variation of needle adopted in establishing corners is \_\_\_\_\_

No.	Government Corners.	Bearing Trees.	In. dia.	Courses they bear.	Links Distant.	Bearing Trees.	In. dia.	Courses they bear.	Links Distant.
1	N. W. Sec. cor. Identified								
2	N. E. Sec. cor. Identified								
3	S. E. Sec. cor. Identified								
4	S. W. Sec. cor. Identified								
5	N. 1/4 Sec. cor. Identified								
6	E. 1/4 Sec. cor. Identified								
7	S. 1/4 Sec. cor. Identified								
8	W. 1/4 Sec. cor. Identified								
<b>NO. SUBDIVISION CORNERS.</b>									
1	Center 1/4 Sec. cor.								
2	North 1/4-1/4s N. W. qr.								
3	East 1/4-1/4s N. W. qr.								
4	South 1/4-1/4s N. W. qr.								
5	West 1/4-1/4s N. W. qr.								
6	Center 1/4-1/4s N. W. qr.								
7	North 1/4-1/4s N. E. qr.								
8	East 1/4-1/4s N. E. qr.								
9	South 1/4-1/4s N. E. qr.								
10	Center 1/4-1/4s N. E. qr.								
11	East 1/4-1/4s S. E. qr.								
12	South 1/4-1/4s S. E. qr.								
13	West 1/4-1/4s S. E. qr.								
14	Center 1/4-1/4s S. E. qr.								
15	South 1/4-1/4s S. W. qr.								
16	West 1/4-1/4s S. W. qr.								
17	Center 1/4-1/4s S. W. qr.								

NAMES OF SWORN ASSISTANTS.

CHAINMEN.	FLAGMEN.	AXMEN.
Chas Wilson W Carlton James Shubert		

MINUTES.

Beginning at the Post at the south west corner of section 35-  
 town 15-R-7-C, corner identified by one Gov Bearing and ran East  
 at 6-D-V. 40 chains & 12 links to the quarter Post on south side of section  
 35- corner identified by one Gov Bearing. Then ran North at 5-D-V- 40 chains  
 to center of section. Then started at the Post at the south west corner of said  
 section & Ran North at 5-D-V 40 chains & 20 links. to the quarter Post on  
 the west side of said section. corner identified by old Gov stump.  
 Then ran East on the quarter line at 6-D-V. to the quarter Post on the East side  
 of said section. Distance 40 chains, corner identified by one Gov stump  
 and stone set by W Lathrop, stone was 3 links wrong. Then started at  
 the 8th Post at North west corner of Mr. Wilsons land & Ran south at 5-D-V  
 40 chains & 18 links to 8th Post on Highway & south west corner of Mr  
 Seasons land

W. L. Smith County Surveyor

MIS35190700002



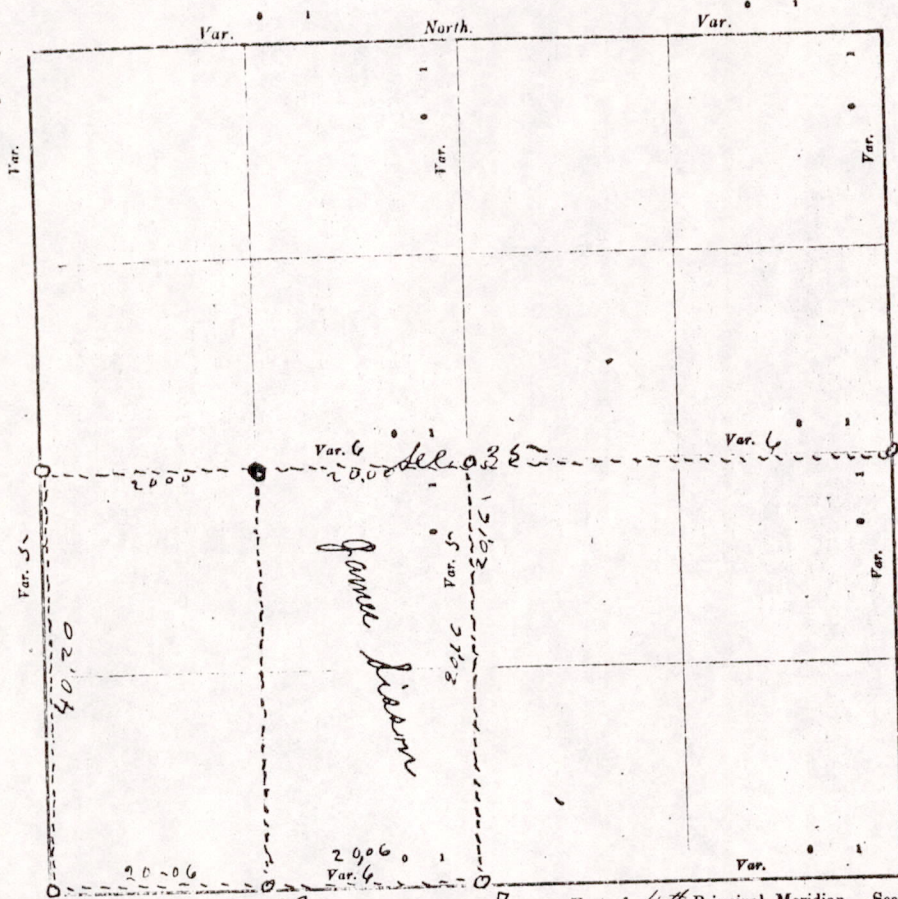
# CERTIFICATE OF SURVEY.

111.50 6.1174

Township

N. B. The variation of

STATE OF WISCONSIN, } No. 1. *M. C. Smith* Surveyor, in and for the County and State aforesaid, do  
 ADAMS COUNTY. }  
 hereby certify that I have surveyed and subdivided Section 35 Township 19 North of Range 7 East of 4<sup>th</sup>  
 Principal Meridian, as represented by the courses and distances on the following plat, and annexed field-notes of survey:  
 Established the center of the section at the point of intersection of straight quarter lines  
 Established all quarter-quarter corners upon the section boundary at proportional distances between known section and quarter section  
 corners, according to the original field-notes of the Government survey.  
 Established all lost corners at proportionate distances between known corners, according to original field-notes of the Government survey:



No.	Subdivision
1	N. W. Sec. cor. 1
2	N. E. Sec. cor. 1
3	S. E. Sec. cor. 1
4	S. W. Sec. cor. 1
5	N. 1/4 Sec. cor. 1
6	E. 1/4 Sec. cor. 1
7	S. 1/4 Sec. cor. 1
8	W. 1/4 Sec. cor. 1
No. SUBDIVISION	
1	Center 1/4 Sec. 1
2	North 1/4 1/4 N
3	East 1/4 1/4 N
4	South 1/4 1/4 N
5	West 1/4 1/4 N
6	Center 1/4 1/4 N
7	North 1/4 1/4 S
8	East 1/4 1/4 S
9	South 1/4 1/4 S
10	Center 1/4 1/4 S
11	East 1/4 1/4 S
12	South 1/4 1/4 S
13	West 1/4 1/4 S
14	Center 1/4 1/4 S
15	South 1/4 1/4 S
16	West 1/4 1/4 S
17	Center 1/4 1/4 S

*Lehae Wilson  
 W. Carlton  
 Game Sisson*

Plat of Section 35 Township 19 North, Range 7 East of 4<sup>th</sup> Principal Meridian. Scale, 80 chains to 6 inches. The figures in red ink are the lengths of the lines as stated in the field-notes of the Government survey.  
 Declination of the Magnetic Meridian from the True Meridian \_\_\_\_\_ East.  
 Surveyed and subdivided March 24 A. D. 1907, in accordance with the State Laws and Instructions of the Commissioner of the General Land Office, and recorded on pages \_\_\_\_\_ of Register in the County Surveyor's office.  
 WITNESS my hand this 26<sup>th</sup> day of March A. D. 1907.  
*M. C. Smith* County Surveyor.

*The above work was done for Mr Game Sisson*

*Beginning at the post at SW corner sec. 35-19-7 - corner identified by 1 gov. bearing and ran. E at 6-D-V 40 ch. and 12 links to 1/4 post on S side section 35 corner identified by 1 gov. bearing. Then ran N at 5-D-V 40 chains to center of section. Then started at post at SW corner of said section & ran N at 5-D-V 40 ch. and 20 links to the 1/4 post on W side said section cor. identified by old gov. stumps then ran E on 1/4 line at 6-D-V to 1/4 post on E side said section Distance 40 chains corner identified by 1 gov. stump and stone set by M. Lathrop, stone was 3 links wrong. Then started at 8<sup>th</sup> post at NW cor. of Mr. Sisson's land and ran S at 5-D-V 40 chains & 18 links to 8<sup>th</sup> post on highway and SW cor. of Mr. Sisson's land.*

*Beginning  
 John 15- R- 7  
 at 6-D-V. 40 c  
 35- corner ident  
 to center of sect  
 section & Ran  
 the west side  
 the ran E  
 of said section  
 and stone set  
 7 8<sup>th</sup> post on  
 highway & 18  
 links to SW  
 corner of Mr*

*M. C. Smith*

MIS 35190700002