

DESCRIPTION of Section, Quarter Section and Quarter-quarter Section Corners of Section 7

Township \_\_\_\_\_ North, Range \_\_\_\_\_ East of \_\_\_\_\_ Principal Meridian.

N. B.—The variation of needle adopted in establishing corners is \_\_\_\_\_

County and State aforesaid, do East of 14<sup>th</sup>

Section and quarter section

of the Government survey:

Var. 2.00  
 11-40-12  
 Var. 2.00  
 11-40-12

No.	Government Corners	Bearing Trees	In. dia.	Courses they bear	Links Distant	Bearing Trees	In. dia.	Courses they bear	Links Distant
1	N. W. Sec. cor. Identified								
2	N. E. Sec. cor. Identified								
3	S. E. Sec. cor. Identified								
4	S. W. Sec. cor. Identified								
5	N. 1/4 Sec. cor. Identified								
6	E. 1/4 Sec. cor. Identified								
7	S. 1/4 Sec. cor. Identified								
8	W. 1/4 Sec. cor. Identified								
<b>No. SUBDIVISION CORNERS.</b>									
1	Center 1/4 Sec. cor.								
2	North 1/4-1/4s N. W. qr.								
3	East 1/4-1/4s N. W. qr.								
4	South 1/4-1/4s N. W. qr.								
5	West 1/4-1/4s N. W. qr.								
6	Center 1/4-1/4s N. W. qr.								
7	North 1/4-1/4s N. E. qr.								
8	East 1/4-1/4s N. E. qr.								
9	South 1/4-1/4s N. E. qr.								
10	Center 1/4-1/4s N. E. qr.								
11	East 1/4-1/4s S. E. qr.								
12	South 1/4-1/4s S. E. qr.								
13	West 1/4-1/4s S. E. qr.								
14	Center 1/4-1/4s S. E. qr.								
15	South 1/4-1/4s S. W. qr.								
16	West 1/4-1/4s S. W. qr.								
17	Center 1/4-1/4s S. W. qr.								

NAMES OF SWORN ASSISTANTS.

CHAINMEN	FLAGMEN	AXMEN
Tom Gaulton Joe Stansky		

Scale, 80 chains to 6

State Laws and Instructions of Surveyor's office.

County Surveyor.  
Dewitt

MINUTES.

Commencing at the Identified 1/4 Post on the south side of section 36 T-19-R-7-E, and ran north on the quarter line at 5:00 D-V 80 chains and 32 links to the established 1/4 post on the north side of the section set post at center, could find no post or Bearing at the North 1/4 Post so went to stone at the N. E. corner of the section & ran west on the section line at 5:00 D-V 80 chains & 47 links to stone at the NW corner of the section. Established 1/4 Post at 40-32 links. Then ran south on the section line at 5:00 D-V 40 chains & 20 links to the Identified quarter Post on the west side of the section, then ran east on the quarter line at 5:00 D-V 80 chains & 32 links to the established quarter Post on the East side of the section. Said quarter post was established by running from the above N. E. corner of the section stone, and from the marked 1/4 Post at the S E corner of the section, set quarter Post at 40 chains and 12 links.

MIS 36190700001



# CERTIFICATE OF SURVEY.

STATE OF WISCONSIN,  
ADAMS COUNTY.

ss. M. L. Smith

Surveyor, in and for the County and State aforesaid, do

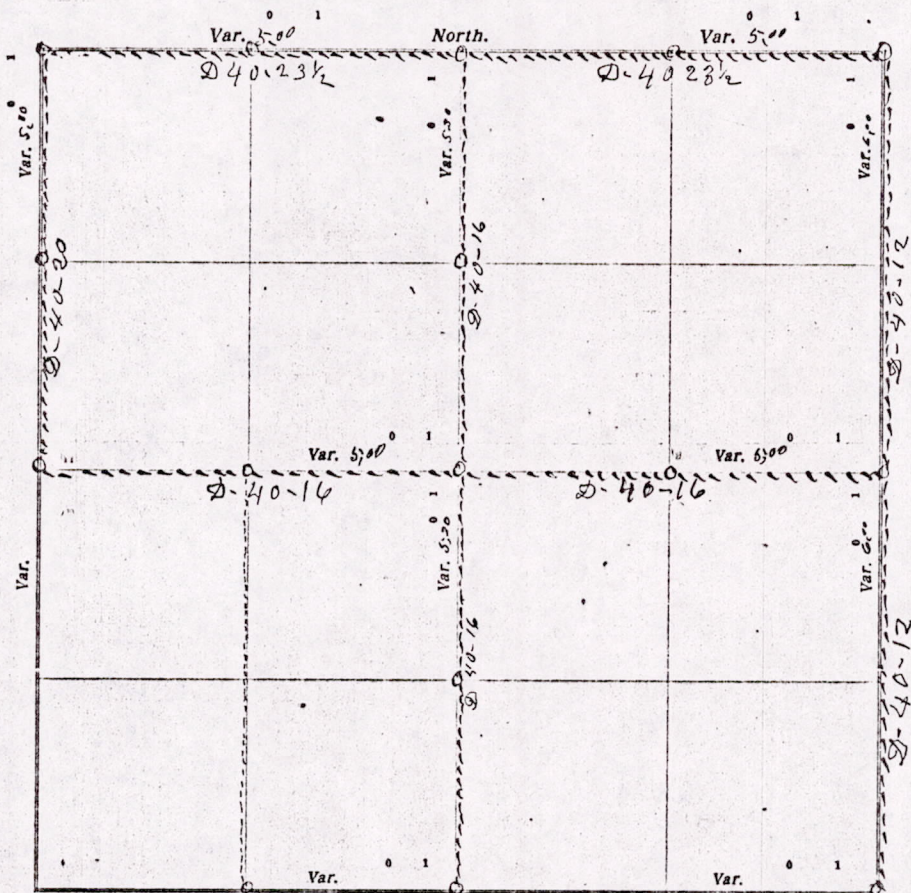
hereby certify that I have surveyed and subdivided Section 36 Township 19 North of Range 7 East of 4th

Principal Meridian, as represented by the courses and distances on the following plat, and annexed field-notes of survey:

Established the center of the section at the point of intersection of *straight* quarter lines.

Established all quarter-quarter corners upon the section boundary at proportional distances between known section and quarter section corners, according to the original field-notes of the Government survey.

Established all lost corners at proportionate distances between known corners, according to original field-notes of the Government survey:



Plat of Section 19, Township 19 North, Range 7 East of 4th Principal Meridian. Scale, 80 chains to 6 inches. The figures in red ink are the lengths of the lines as stated in the field-notes of the Government survey.

Declination of the Magnetic Meridian from the True Meridian \_\_\_\_\_ East.

Surveyed and subdivided this 19 day of April A. D. 1915, in accordance with the State Laws and Instructions of the Commissioner of the General Land Office, and recorded on pages \_\_\_\_\_ of Register in the County Surveyor's office.

WITNESS my hand this 19th day of April A. D. 1915.

M. L. Smith County Surveyor.

*The above work was done at the request of Mr. Landercott.*

MIS 36190700001