

**LEGAL DESCRIPTION:**

PARTS OF THE NW<sup>1</sup>/<sub>4</sub>NE<sup>1</sup>/<sub>4</sub> & THE NE<sup>1</sup>/<sub>4</sub>NW<sup>1</sup>/<sub>4</sub> & ALL OF THE SW<sup>1</sup>/<sub>4</sub>NE<sup>1</sup>/<sub>4</sub> & SE<sup>1</sup>/<sub>4</sub>NW<sup>1</sup>/<sub>4</sub>, SECTION 7, T19N, R7E, TOWN OF COLBURN, ADAMS COUNTY, WISCONSIN.

COMMENCING AT THE HARRISON CAST IRON MONUMENT ON THE NORTHWEST QUARTER CORNER OF SECTION 7;

THENCE N89°47'05"E ALONG THE NORTH LINE OF SECTION 7, 1019.13 FEET TO THE 1/16TH CORNER ON THE CENTERLINE OF BEAVER AVENUE AND THE NORTHEAST CORNER OF CSM 148;

THENCE S00°22'18"W ALONG THE 1/16TH LINE AND THE EAST LINE OF CSM 148, 33.00 FEET TO A PIPE ON THE SOUTH LINE OF BEAVER AVENUE, THE NORTHEAST CORNER OF LOT 1, CSM 148 AND THE POINT OF BEGINNING OF THE FOLLOWING DESCRIPTION;

THENCE N89°47'05"E ALONG THE SOUTH LINE OF BEAVER AVENUE, 1320.41 FEET TO A REBAR ON THE N-S QUARTER LINE;

THENCE N89°47'15"E ALONG THE SOUTH LINE OF BEAVER AVENUE, 1320.47 FEET TO A REBAR ON THE 1/16TH LINE;

THENCE S00°18'32"W ALONG THE 1/16TH LINE, 1286.76 FEET TO A REBAR ON THE 1/16TH CORNER AND THE NORTHWEST CORNER OF CSM 4786;

THENCE S00°18'32"W ALONG THE 1/16TH LINE AND THE WEST LINE OF CSM 4786, 1319.76 FEET TO A REBAR ON THE 1/16TH CORNER AND THE SOUTHWEST CORNER OF CSM 4786;

THENCE S89°12'15"W ALONG THE EAST-WEST QUARTER LINE OF SECTION 7, 1324.17 FEET TO A REBAR ON THE CENTER OF SECTION 7;

THENCE CONTINUE S89°12'15"W ALONG THE EAST-WEST QUARTER LINE OF SECTION 7, 1319.19 FEET TO A REBAR ON THE 1/16TH CORNER AND THE EAST LINE OF CSM 3168;

THENCE N00°20'17"E ALONG THE 1/16TH LINE AND THE EAST LINE OF CSM 3168, 1332.49 FEET TO A PIPE ON THE 1/16TH CORNER, THE NORTHEAST CORNER OF CSM 3168 AND THE SOUTHEAST CORNER OF CSM 149;

THENCE N00°22'18"E ALONG THE 1/16TH LINE AND THE EAST LINE OF CSM'S 148 AND 149 AND THEIR PROLONGATIONS, 1300.90 FEET THE POINT OF BEGINNING, CONTAINING 6,921.967 SQUARE FEET OR 158.907 ACRES.

**SURVEYOR'S CERTIFICATE:**

THE PROPERTY AS SHOWN AND DESCRIBED ON THIS MAP WAS SURVEYED UNDER MY DIRECTION AND CONTROL ACCORDING TO THE WISCONSIN ADMINISTRATIVE CODE, CHAPTER A-67 OF MINIMUM STANDARDS FOR PROPERTY SURVEYS, AND IS A CORRECT REPRESENTATION OF SAID SURVEY, TO THE BEST OF MY KNOWLEDGE AND BELIEF.

DATED THIS 25TH DAY OF MARCH, 2011.

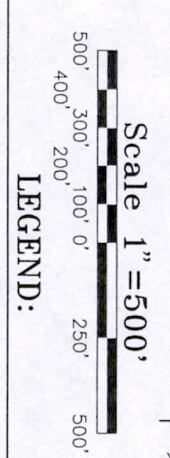
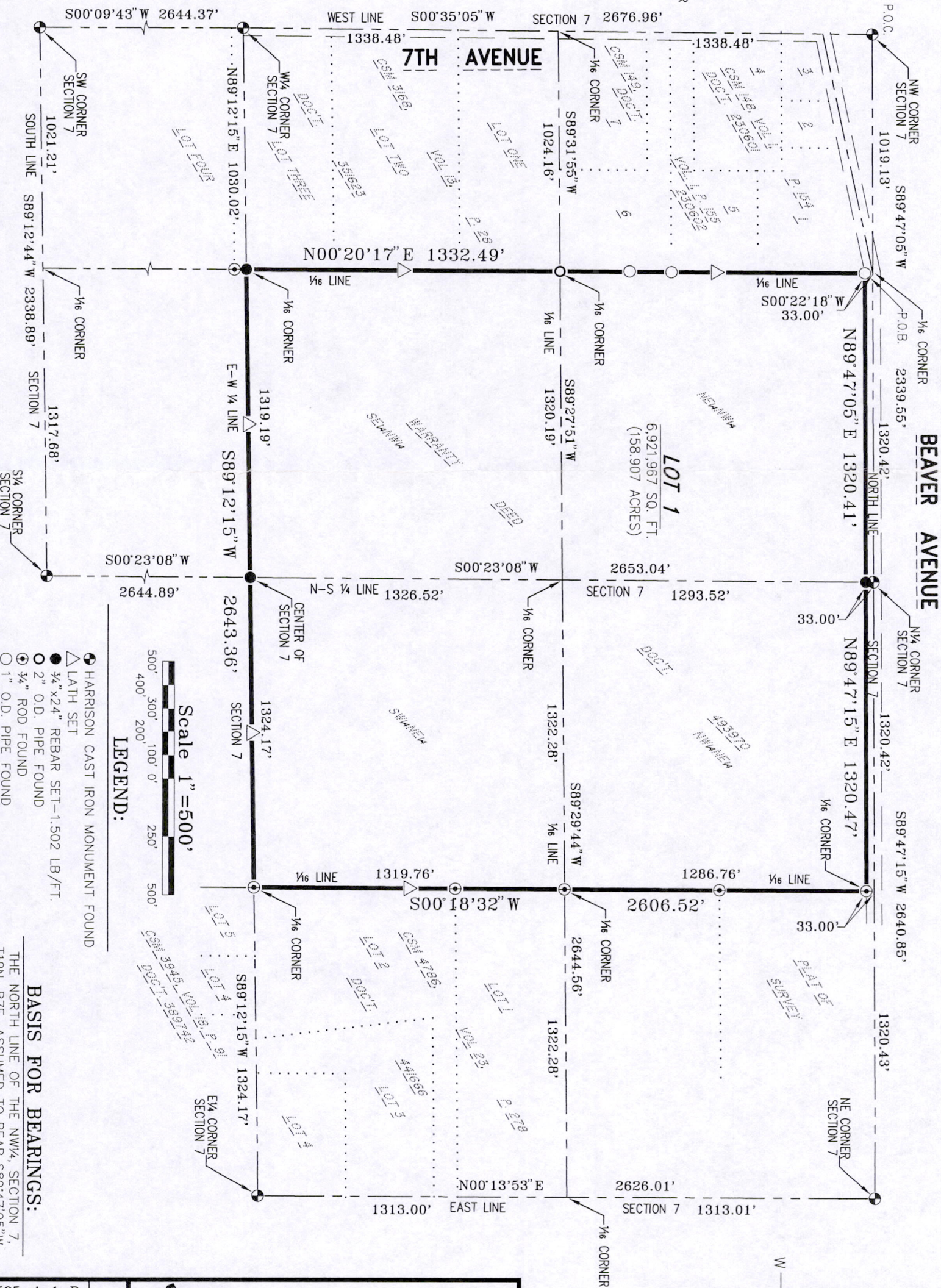
THOMAS J. TRZINSKI, R.L.S. 2636  
REGISTERED LAND SURVEYOR



**ADAMS COUNTY PLAT OF SURVEY**

FOR  
**Heartland Farms, Inc.**

Parts of the NE<sup>1</sup>/<sub>4</sub>NW<sup>1</sup>/<sub>4</sub> & NW<sup>1</sup>/<sub>4</sub>NE<sup>1</sup>/<sub>4</sub> & All of the SE<sup>1</sup>/<sub>4</sub>NW<sup>1</sup>/<sub>4</sub> & SW<sup>1</sup>/<sub>4</sub>NE<sup>1</sup>/<sub>4</sub>,  
Section 7, T19N, R7E, Town of Colburn, Adams County, Wisconsin



**LEGEND:**

- HARRISON CAST IRON MONUMENT FOUND
- ▲ LATH SET
- 3/4"x24" REBAR SET-1.502 LB/FT.
- 2" O.D. PIPE FOUND
- 3/4" ROD FOUND
- 1" O.D. PIPE FOUND
- ..... PREVIOUSLY RECORDED AS (000)
- P.O.C. POINT OF COMMENCEMENT
- P.O.B. POINT OF BEGINNING

**BASIS FOR BEARINGS:**

THE NORTH LINE OF THE NW<sup>1</sup>/<sub>4</sub>, SECTION 7, T19N, R7E, ASSUMED TO BEAR S89°47'05"W.

P5507190711002

Dwg. No. 9595-A-1-B
Project No. 11-039
Drawn By: Don Schmall
Date: March 25, 2011
Sheet 1 of 1 Sheet

**ESP GROUP, INC.**  
**LAMPERT-LEE & ASSOCIATES**  
 ENGINEERS • SURVEYORS • PLANNERS  
 10968 State Hwy. 54 East • Wisconsin Rapids, WI 54494-8718  
 715-424-3131 or 715-344-0068 • FAX 715-423-8774