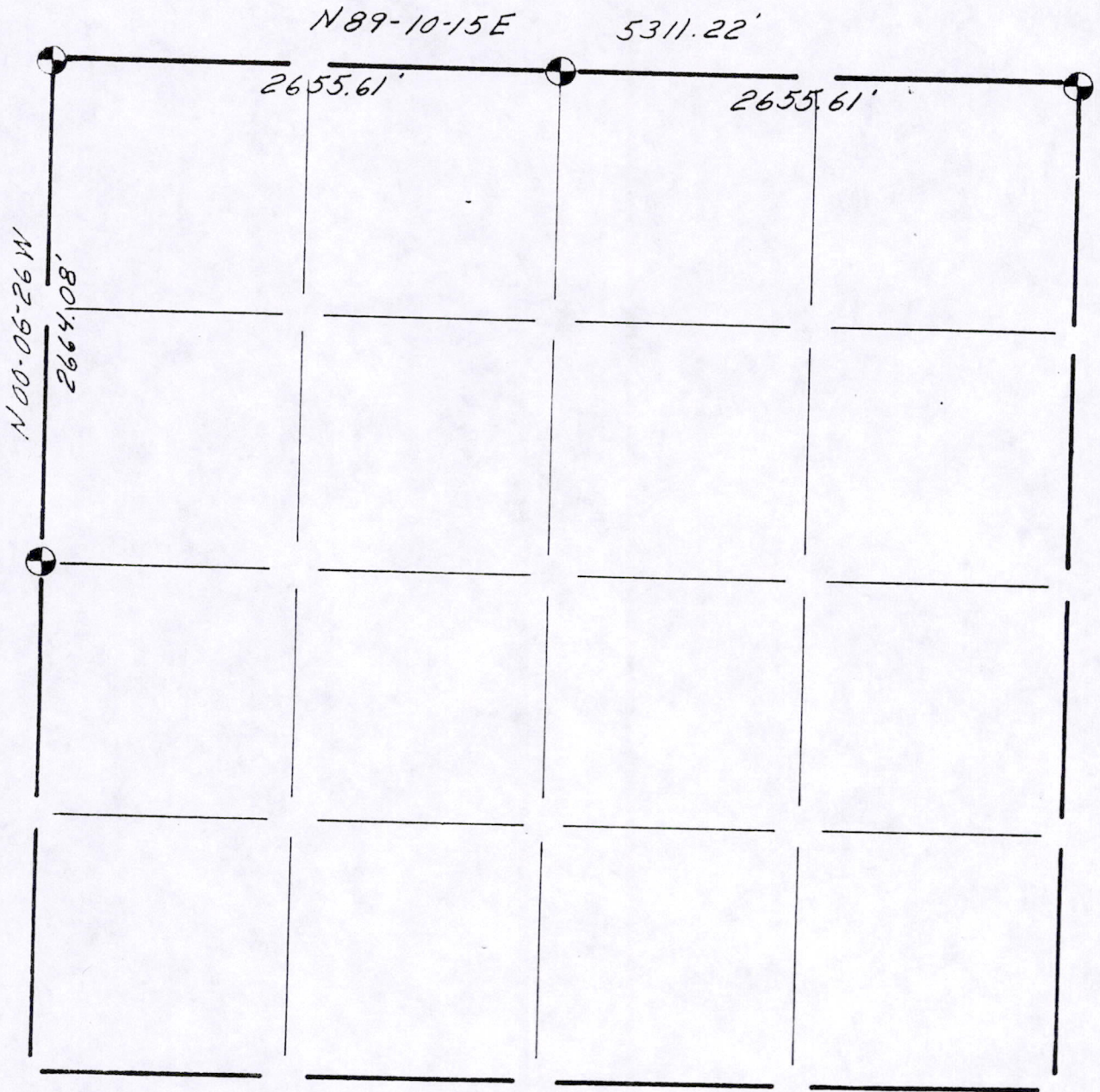





SECTION SUMMARY AND INDEX

$\frac{14}{\text{SECTION}} - \frac{19}{\text{TOWN}} - \frac{7}{\text{RANGE}}$



LEGEND

-  HARRISON CAST IRON MONUMENT
-  STONE OR CONCRETE MONUMENT
-  OTHER _____
- _____
- _____

filed for record this 11
 day of MAY 19 83
 per 89.50 Wisconsin Statutes.
 G. P. R.
 ADAMS COUNTY SURVEYOR

Kiedrowski Engineering, Inc.

4340 80th Street South (Kellner)
 Wisconsin Rapids, WI 54494

4/29/83

Sec 14 19 07 00002