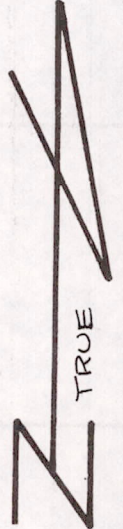
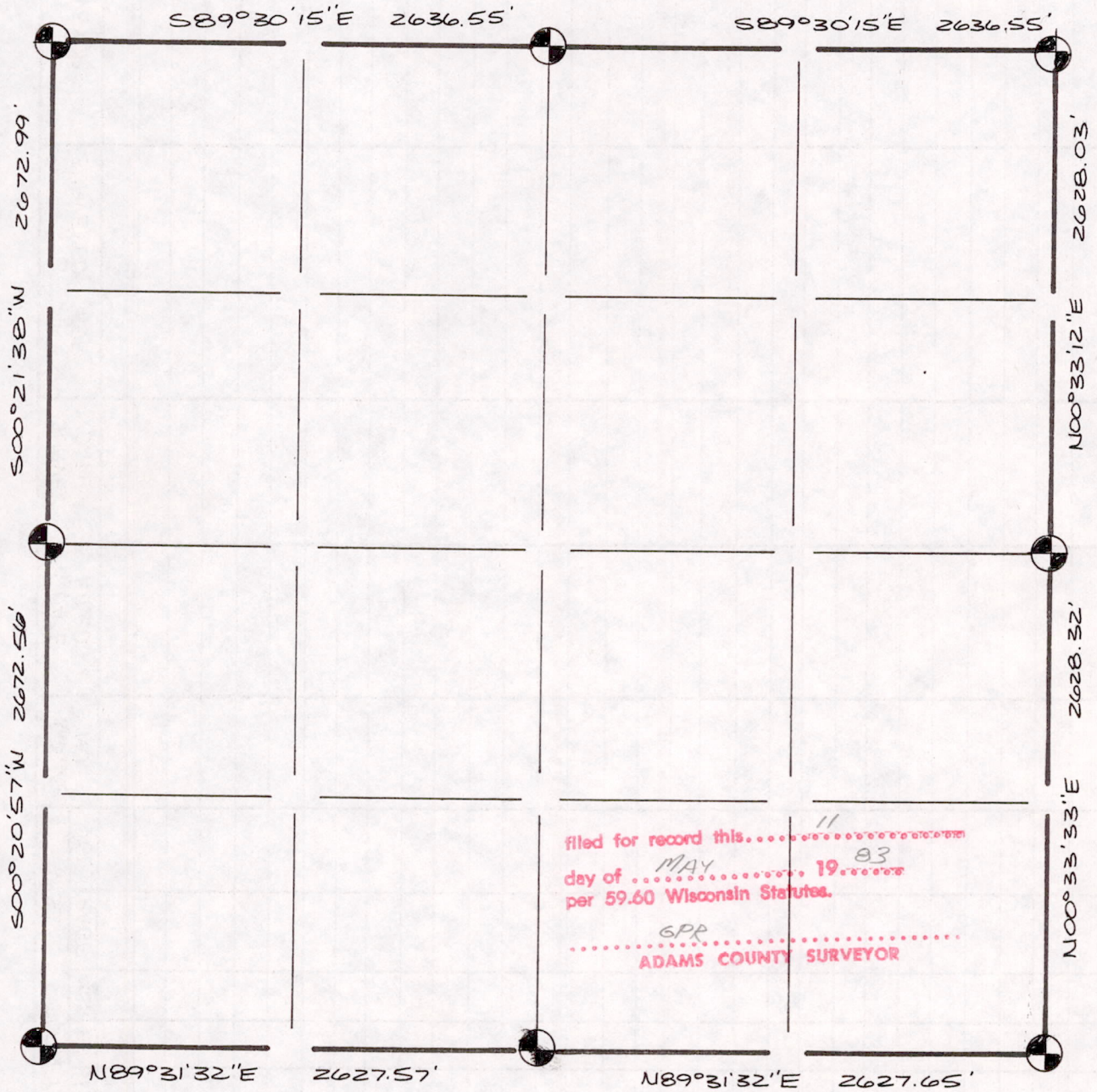



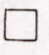

# SECTION SUMMARY AND INDEX

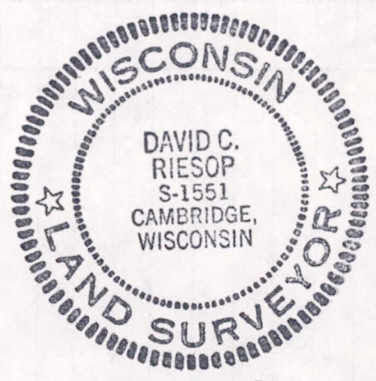
16 — 19N — 7E  
SECTION TOWN RANGE



filed for record this... 11  
 day of ... MAY ... 19 83  
 per 59.60 Wisconsin Statutes.  
 GPP  
 ADAMS COUNTY SURVEYOR

## LEGEND

-  HARRISON CAST IRON MONUMENT
-  STONE OR CONCRETE MONUMENT
-  OTHER \_\_\_\_\_
- \_\_\_\_\_
- \_\_\_\_\_



Sec 16190700001

512183