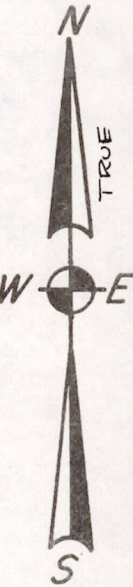
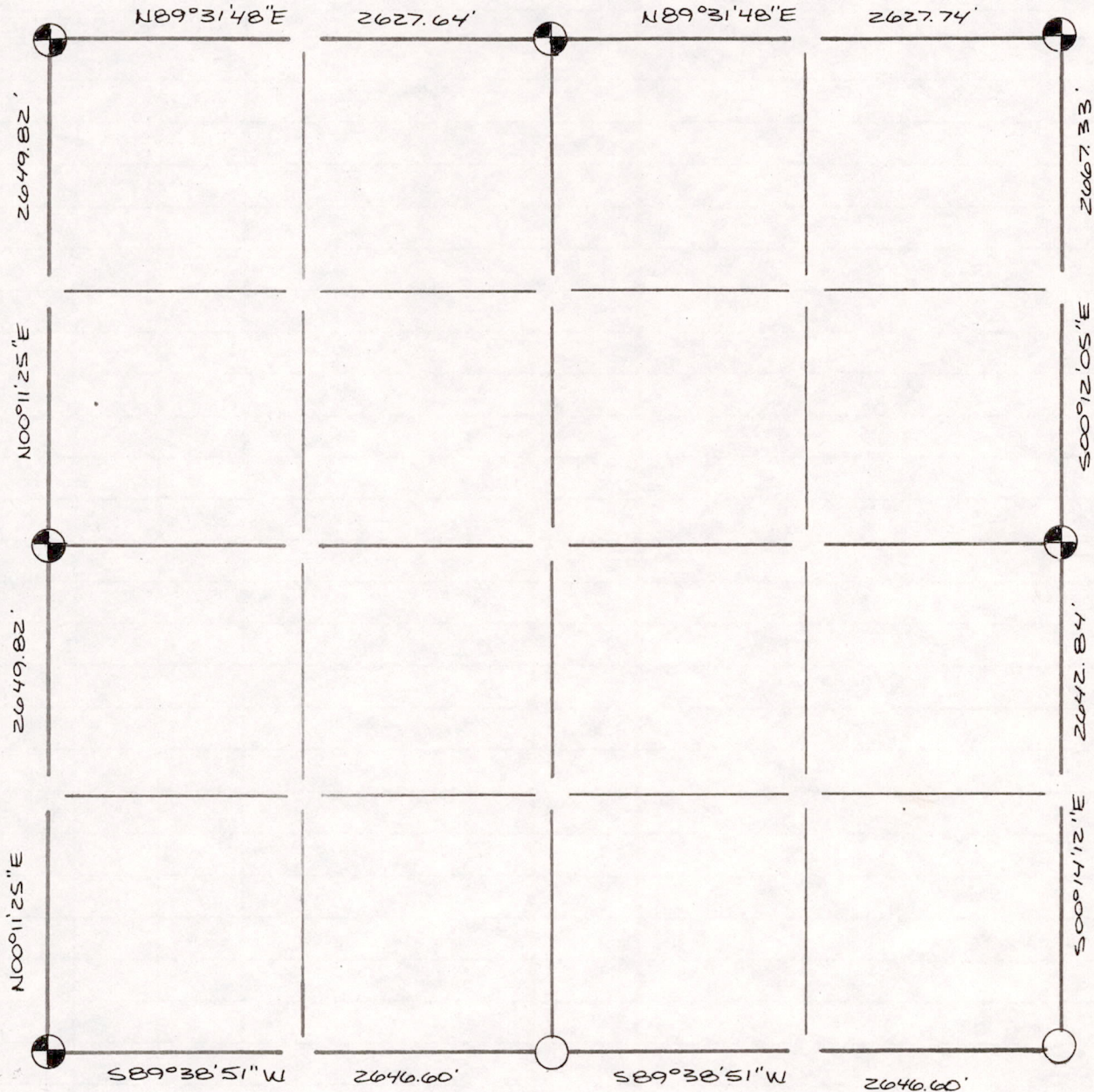


Section Summary and Index

21 - 19N - 7E
 Section Town Range



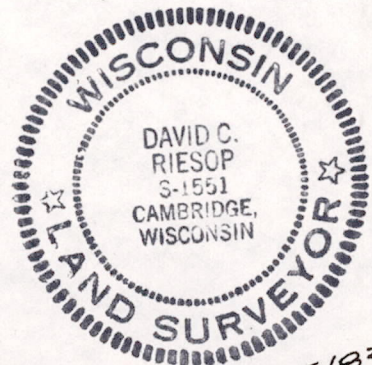
LEGEND

- ⊕ - Harrison cast iron monument.
- - Stone or concrete monument.
- - Other 2" I.D. x 60" GALVANIZED PIPE

Filed for record this 5th

day of Oct 19 1983
 per 59.60 Wisconsin Statutes.

D. Rheinhardt
 ADAMS COUNTY SURVEYOR



Sec 21190700001

8/25/83