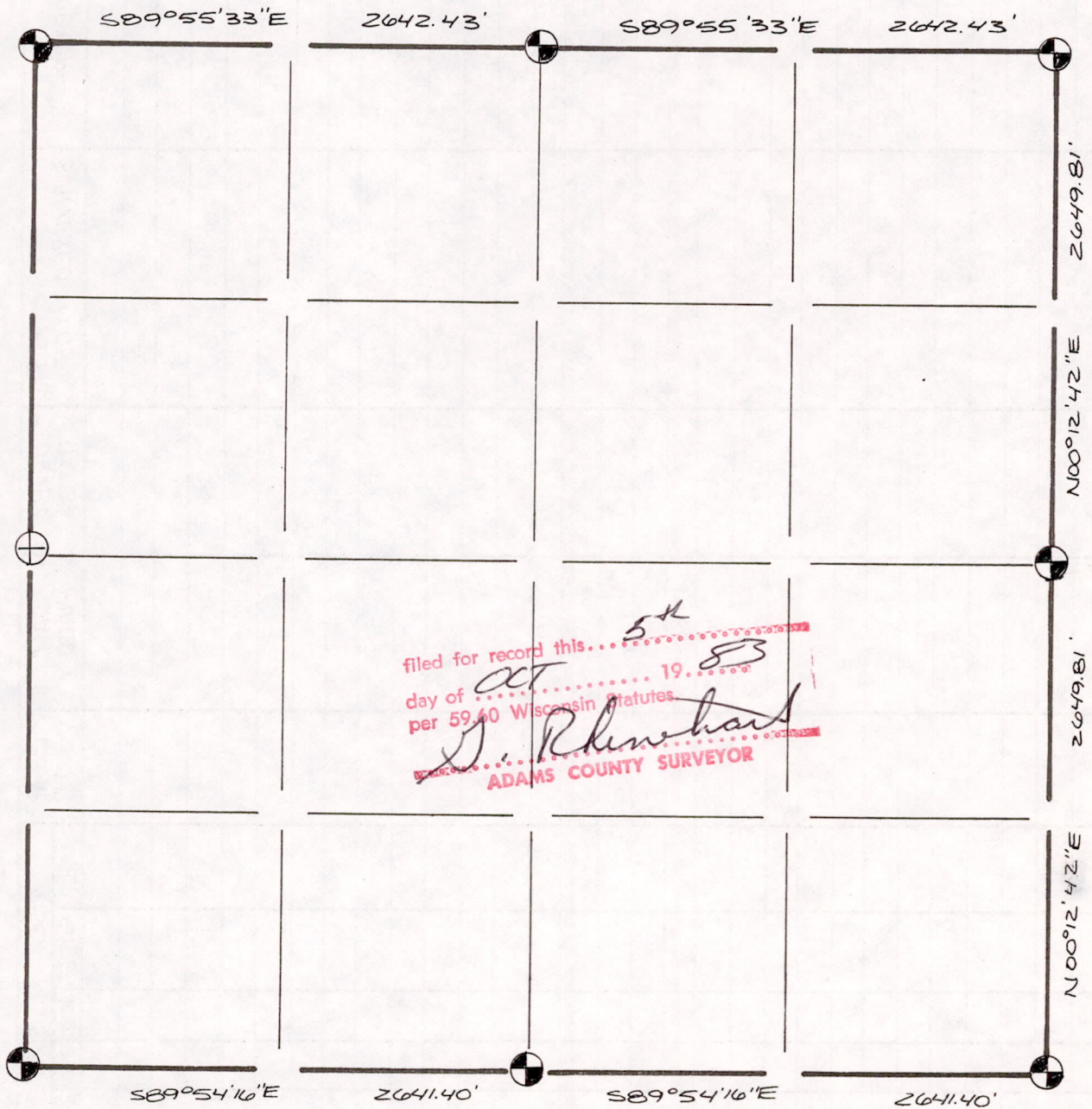





SECTION SUMMARY AND INDEX

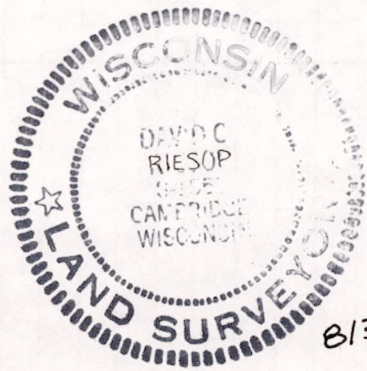
29 - 19N - 7E
SECTION TOWN RANGE



filed for record this... ^{5th} day of OCT 19... ⁸³ per 59.40 Wisconsin Statutes
D. Rheinhardt
 ADAMS COUNTY SURVEYOR

LEGEND

-  HARRISON CAST IRON MONUMENT
-  STONE OR CONCRETE MONUMENT
-  OTHER _____



8/30/83

Sec 29190700001