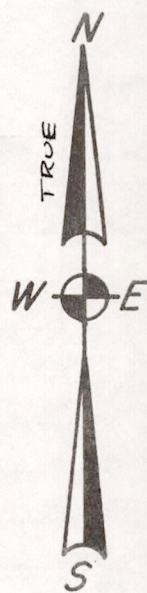
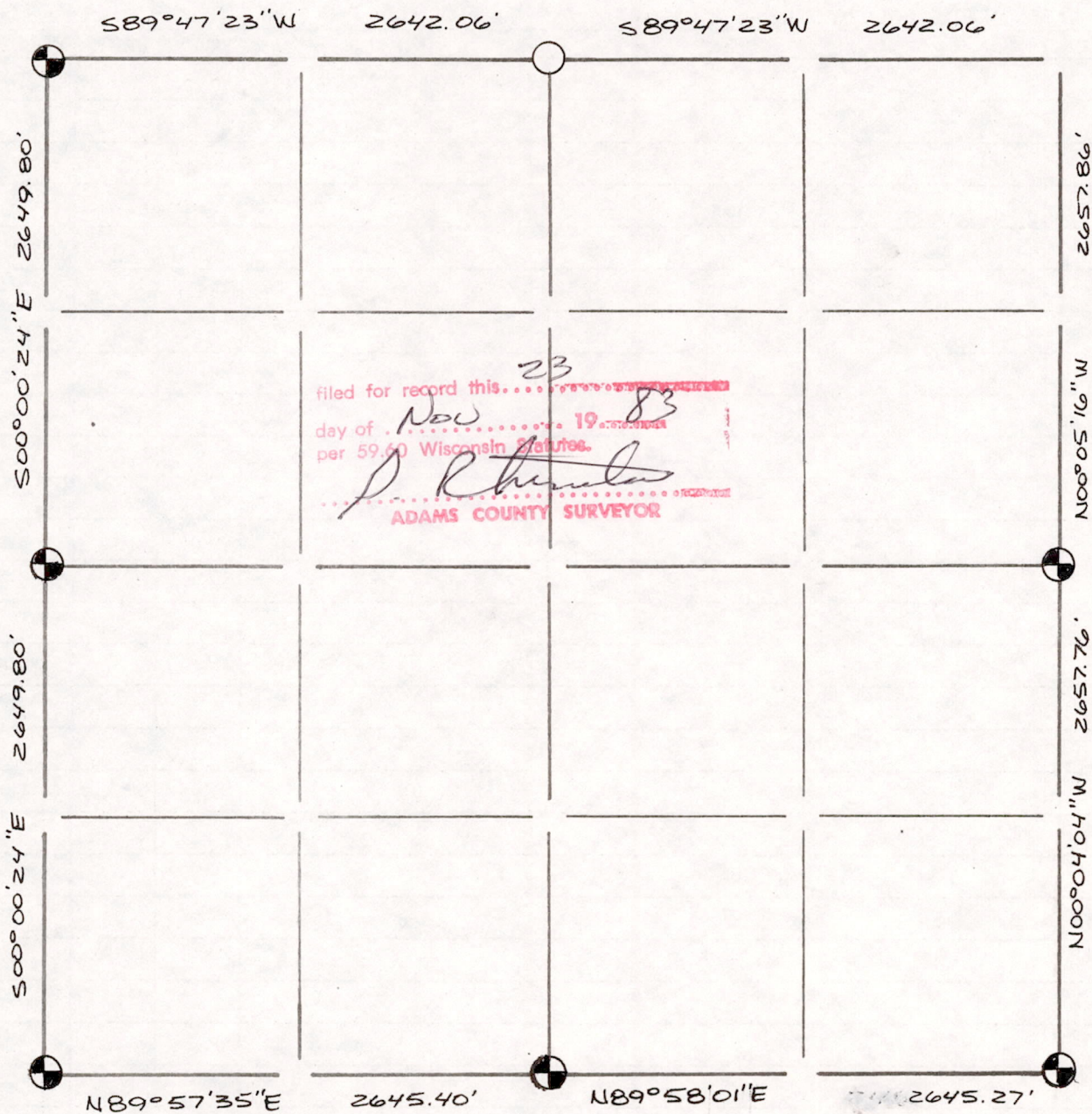


Section Summary and Index

33 19N 7E
 Section Town Range

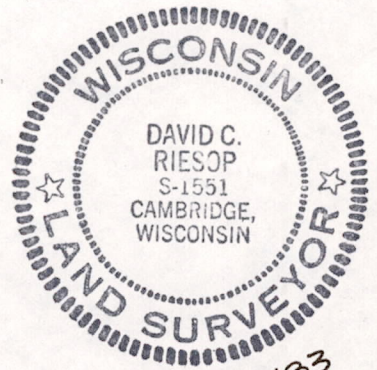


23
 filed for record this...
 day of Nov 1983
 per 59.60 Wisconsin Statutes.
D. R. ...
 ADAMS COUNTY SURVEYOR

LEGEND

- ⊕ - Harrison cast iron monument.
- - Stone or concrete monument.
- - Other 2" I.D. x 60" GALV. PIPE

Sec 33190700001



9/30/83