

DESCRIPTION of Section, Quarter Section and Quarter quarter Section Corners of Section

Township \_\_\_\_\_ North, Range \_\_\_\_\_ East of \_\_\_\_\_ Principal Meridian.

N. B. - The variation of needle adopted in establishing corners is \_\_\_\_\_

No.	Government Corners.	Bearing Trees.	In. dia.	Courses they bear.	Links Distant.	Bearing Trees.	In. dia.	Courses they bear.	Links Distant.
1	N. W. Sec. cor. Identified								
2	N. E. Sec. cor. Identified								
3	S. E. Sec. cor. Identified								
4	S. W. Sec. cor. Identified								
5	N. 1/4 Sec. cor. Identified								
6	E. 1/4 Sec. cor. Identified								
7	S. 1/4 Sec. cor. Identified								
8	W. 1/4 Sec. cor. Identified								
		Blk oak	6	N-S-W	42				
No.	SUBDIVISION CORNERS.								
1	Center 1/4 Sec. cor.								
2	North 1/4-1/4s N. W. qr.								
3	East 1/4-1/4s N. W. qr.								
4	South 1/4-1/4s N. W. qr.								
5	West 1/4-1/4s N. W. qr.								
6	Center 1/4-1/4s N. W. qr.								
7	North 1/4-1/4s N. E. qr.								
8	East 1/4-1/4s N. E. qr.								
9	South 1/4-1/4s N. E. qr.								
10	Center 1/4-1/4s N. E. qr.								
11	East 1/4-1/4s S. E. qr.								
12	South 1/4-1/4s S. E. qr.								
13	West 1/4-1/4s S. E. qr.								
14	Center 1/4-1/4s S. E. qr.								
15	South 1/4-1/4s S. W. qr.								
16	West 1/4-1/4s S. W. qr.								
17	Center 1/4-1/4s S. W. qr.								

NAMES OF SWORN ASSISTANTS.

CHAINMEN.	FLAGMEN.	AXMEN.
August Bulygreen Arthur Capak		

MINUTES.

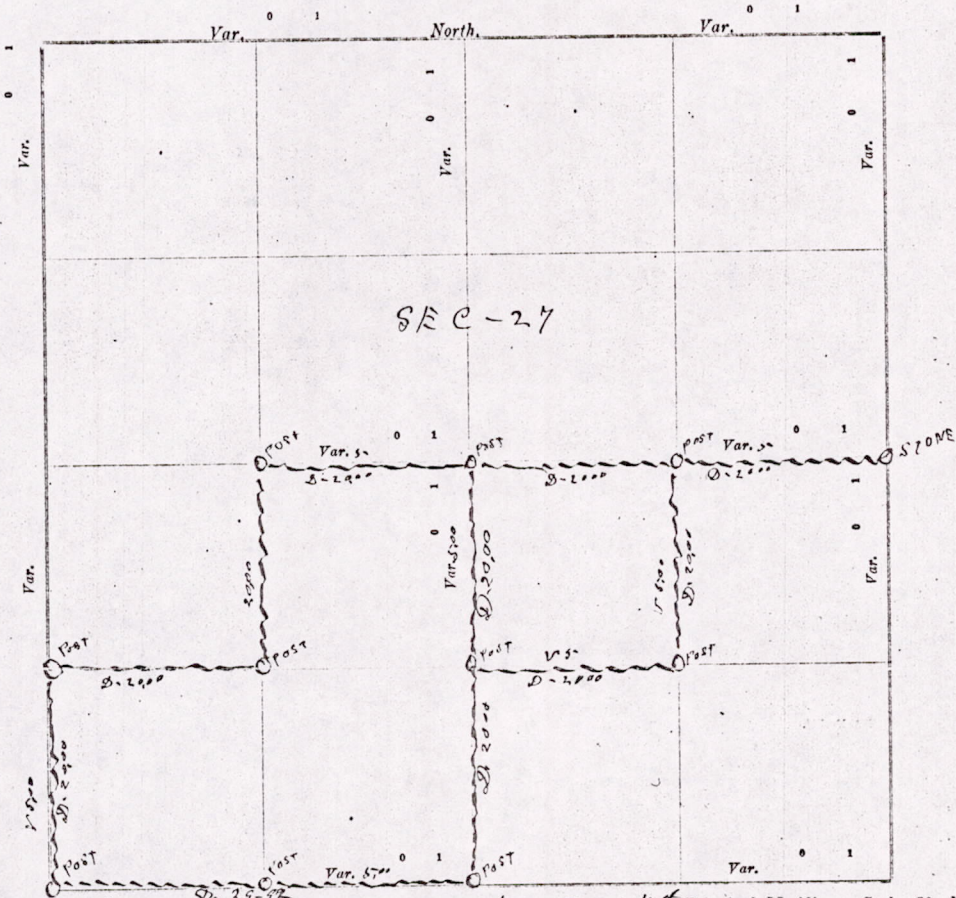
Starting at the Identified S. W. corner of Section 27-S-20-R-5-C. and ran East at 5-D-V-39 chains & 92 links to the quarter Post on the south side of the section. Then North at 5-D-V 110 chains to Post at center of the section. Then went to the Identified quarter Post on the East side of the section (no number to make new Bearing) and ran west at 5-D-V 110 chains to Post at center of section. Then went 20 chains & set Post at Highway. Then starting again at the S. W. corner of the section & ran north at 5-D-V 20 chains & set Post. Then East up the Hill 20 chains & set Post near the school house. Then North in Highway 20 chains to Post set the day before in running from the East.

W. C. Smith's County Surveyor

M1527200500002

# CERTIFICATE OF SURVEY.

STATE OF WISCONSIN, } ss. M. L. Smith Surveyor, in and for the County and State aforesaid, do  
 ADAMS COUNTY. }  
 hereby certify that I have surveyed and subdivided Section 27 Township 20 North of Range 5 East of 4th  
 Principal Meridian, as represented by the courses and distances on the following plat, and annexed field-notes of survey:  
 Established the center of the section at the point of intersection of straight quarter lines.  
 Established all quarter-quarter corners upon the section boundary at proportional distances between known section and quarter section  
 corners, according to the original field-notes of the Government survey.  
 Established all lost corners at proportionate distances between known corners, according to original field-notes of the Government survey:



Plat of Section 27 Township 20 North, Range 5 East of 4th Principal Meridian. Scale, 80 chains to 6 inches. The figures in red ink are the lengths of the lines as stated in the field-notes of the Government survey.

Declination of the Magnetic Meridian from the True Meridian \_\_\_\_\_ East.  
 Surveyed and subdivided this 18 & 19th day of December A. D. 1913, in accordance with the State Laws and Instructions of the Commissioner of the General Land Office, and recorded on pages \_\_\_\_\_ of Register in the County Surveyor's office.  
 WITNESS my hand this 19th day of December A. D. 1913.

M. L. Smith County Surveyor.

The above work was at the request of Mr. Joe Guzie

M1527200500002

Am  
 114  
 at  
 the  
 21  
 my  
 17  
 at  
 the  
 20