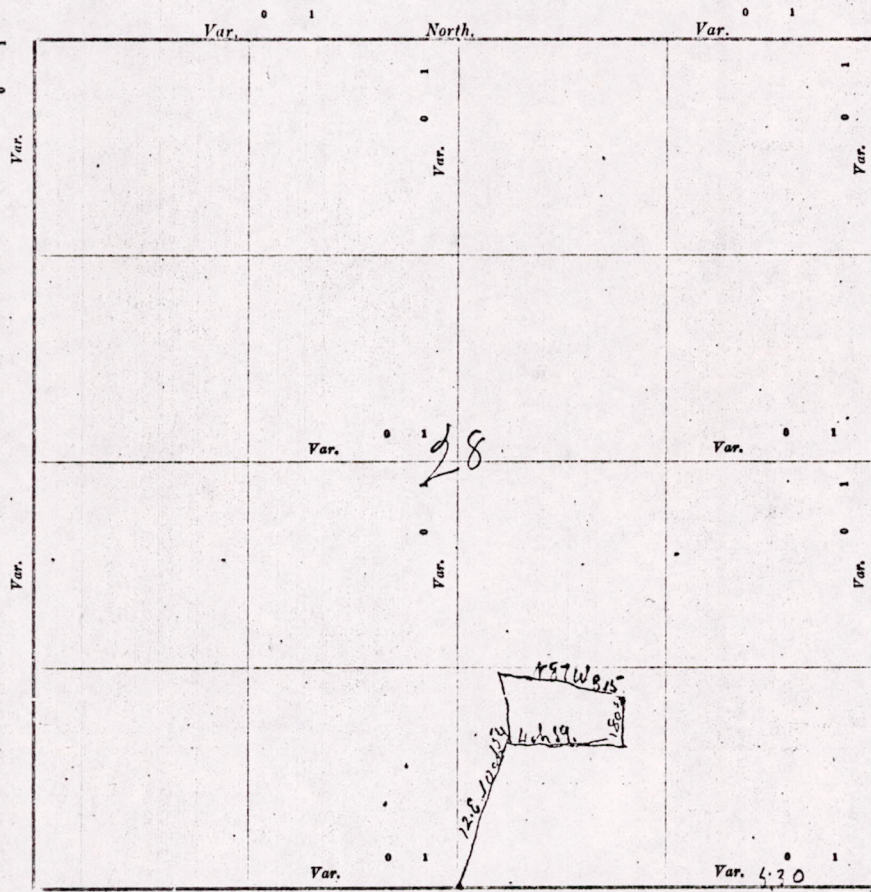


CERTIFICATE OF SURVEY.

STATE OF WISCONSIN, } ss. 1. Hugh Hurley Surveyor, in and for the County and State aforesaid, do
 ADAMS COUNTY. }
 hereby certify that I have surveyed and subdivided Section 28 Township 20, North of Range 5 East of
 Principal Meridian, as represented by the courses and distances on the following plat, and annexed field-notes of survey:
 Established the center of the section at the point of intersection of straight quarter lines.
 Established all quarter-quarter corners upon the section boundary at proportional distances between known section and quarter section
 corners, according to the original field-notes of the Government survey.
 Established all lost corners at proportionate distances between known corners, according to original field-notes of the Government survey:



Plat of Section 28, Township 20 North, Range 5 East of Principal Meridian. Scale, 80 chains to 6 inches. The figures in red ink are the lengths of the lines as stated in the field-notes of the Government survey.

Declination of the Magnetic Meridian from the True Meridian _____ East.

Surveyed and subdivided _____ A. D. 19 _____, in accordance with the State Laws and Instructions of

the Commissioner of the General Land Office, and recorded on pages _____ of Register in the County Surveyor's office.

WITNESS my hand this 24 day of April A. D. 1905.

Hugh Hurley Surveyor.

DESCRIPTION

Township

S. B. The following

- No. 1 N. W. 1/4 Sec. 28
- 2 N. E. 1/4 Sec. 28
- 3 S. E. 1/4 Sec. 28
- 4 S. W. 1/4 Sec. 28
- 5 N. 1/2 Sec. 28
- 6 E. 1/2 Sec. 28
- 7 S. 1/2 Sec. 28
- 8 W. 1/2 Sec. 28
- No. SUBDIVISION
- 1 Center 1/4 Sec. 28
- 2 North 1/4 1/4 N.
- 3 East 1/4 1/4 N.
- 4 South 1/4 1/4 N.
- 5 West 1/4 1/4 N.
- 6 Center 1/4 1/4 N.
- 7 North 1/4 1/4 S.
- 8 East 1/4 1/4 S.
- 9 South 1/4 1/4 S.
- 10 Center 1/4 1/4 S.
- 11 East 1/4 1/4 S. E.
- 12 South 1/4 1/4 S.
- 13 West 1/4 1/4 S.
- 14 Center 1/4 1/4 S.
- 15 South 1/4 1/4 S.
- 16 West 1/4 1/4 S.
- 17 Center 1/4 1/4 S.

CHAINMEN

Forest Leach
George Thurber

Reopened at
 center of Chicago
 since D.R. 1800
 S. 11. W 2 ch. 37.6-30

mis 28 200500001