

CERTIFICATE OF SURVEY.

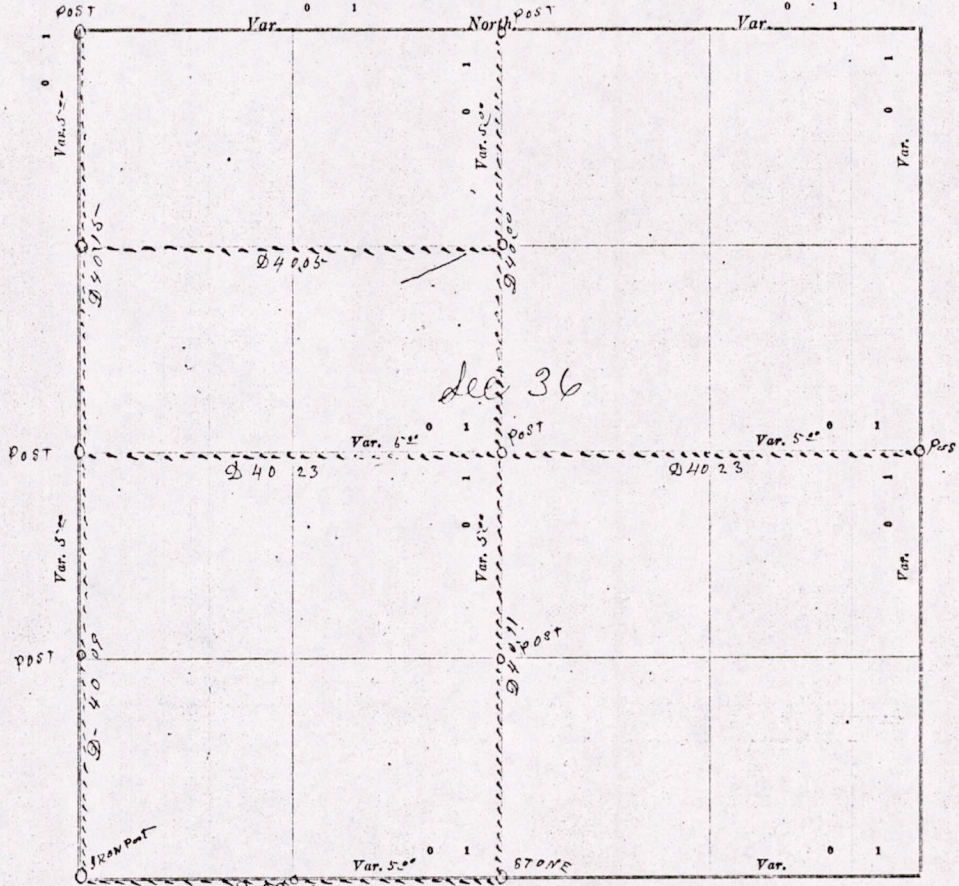
STATE OF WISCONSIN, } ss. I. M. L. Smith Surveyor, in and for the County and State aforesaid, do
ADAMS COUNTY.

hereby certify that I have surveyed and subdivided Section 36 Township 20 North of Range 5 East of 4th Principal Meridian, as represented by the courses and distances on the following plat, and annexed field-notes of survey:

Established the center of the section at the point of intersection of straight quarter lines.

Established all quarter-quarter corners upon the section boundary at proportional distances between known section and quarter section corners, according to the original field-notes of the Government survey.

Established all lost corners at proportionate distances between known corners, according to original field-notes of the Government survey:



Plat of Section 36, Township 20 North, Range 5 East of 4th Principal Meridian. Scale, 80 chains to 6 inches. The figures in red ink are the lengths of the lines as stated in the field-notes of the Government survey.

Declination of the Magnetic Meridian from the True Meridian _____ East.

Surveyed and subdivided this 29 & 30th Days of April A. D. 1914, in accordance with the State Laws and Instructions of the Commissioner of the General Land Office, and recorded on pages _____ of Register in the County Surveyor's office.

WITNESS my hand this 30th day of April A. D. 1914.

M. L. Smith County Surveyor.

The above work was done at the request of Frank Kouba

MIS 36 200500001

Joe W...

corners and quarter lines to the N and S and east and west. They are not in section there on the distant of the

DESCRIPTION of Section, Quarter Section and Quarter quarter Section Corners of Section

Township North, Range East of Principal Meridian.

N. B. - The variation of needle adopted in establishing corners is

Table with columns: Government Corners, Bearing Trees, In. dia., Courses they bear, Links Distant, Bearing Trees, In. dia., Courses they bear, Links Distant. Rows 1-17 describing section corners and subdivision corners.

NAMES OF SWORN ASSISTANTS.

Table with columns: CHAINMEN, FLAGMEN, AXMEN. Contains handwritten names: Joe Mrs. Danck.

Scale, 80 chains to 6

MINUTES.

Commencing at the Identified S.W. corner of section 36, T. 20-R. 15-E and running thence North on the section line 40 chains & 9 links to the Identified Quarter Post on the west side of the section. Thence North at 5-D-V 70 chains & 15 links to the N.W. corner of the section. Then started at the 1/4 Post on the west side of the section and ran East on the 1/4 line at 5-D-V, 80 chains & 46 links to the 1/4 Post on the east side of the section. They started at the center post & ran north on the 1/4 line 40 chains, but could find no Post or bearing. Then started at the 1/4 Post 20 chains North from the center of said section & ran west 40 chains & 5 links to the 1/4 Post on the west side of the section. Then started at the Post at center of the section & ran South at 5-D-V to the 1/4 Post on the south side of the section on the town line, made one New Bearing Distance 40 chains & 11 links. Then ran west on the town line to the S.W. corner of the section Distance 39 chains & 26 links.

M 1536200500001

M. L. Smith County Surveyor