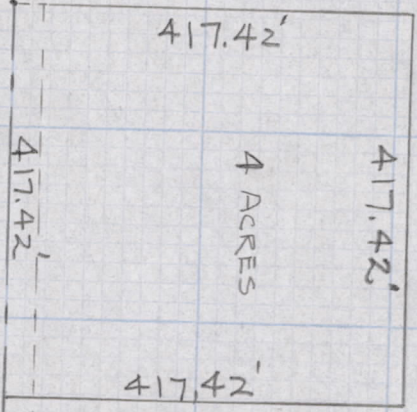
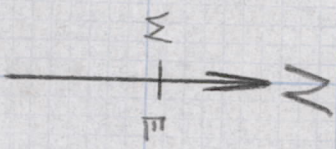


West line
Sec. 1

Gov. Lot 13
Sec. 1, T20N, R5E.



To Co. TR. H¹/₂"

267.9'

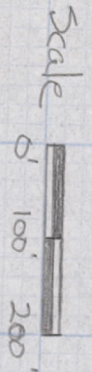
To S.T.H. 13

W¹/₄ Corner
Sec 1, T20N, R5E.

E¹/₄ line
Sec 1, T20N, R5E.

SKETCH
OF
MLSNA PROPERTY

PART
OF
Gov. Lot 13, Sec. 1, T20N, R5E
TOWN OF ROME
ADAMS Co.



Sept. 1962

D.A. Tala
Reg. Surv. S-282

Pos 01200500001