

W 1/4 COR

1" = 300'

AZ 90° 20'

S 85° 40' E

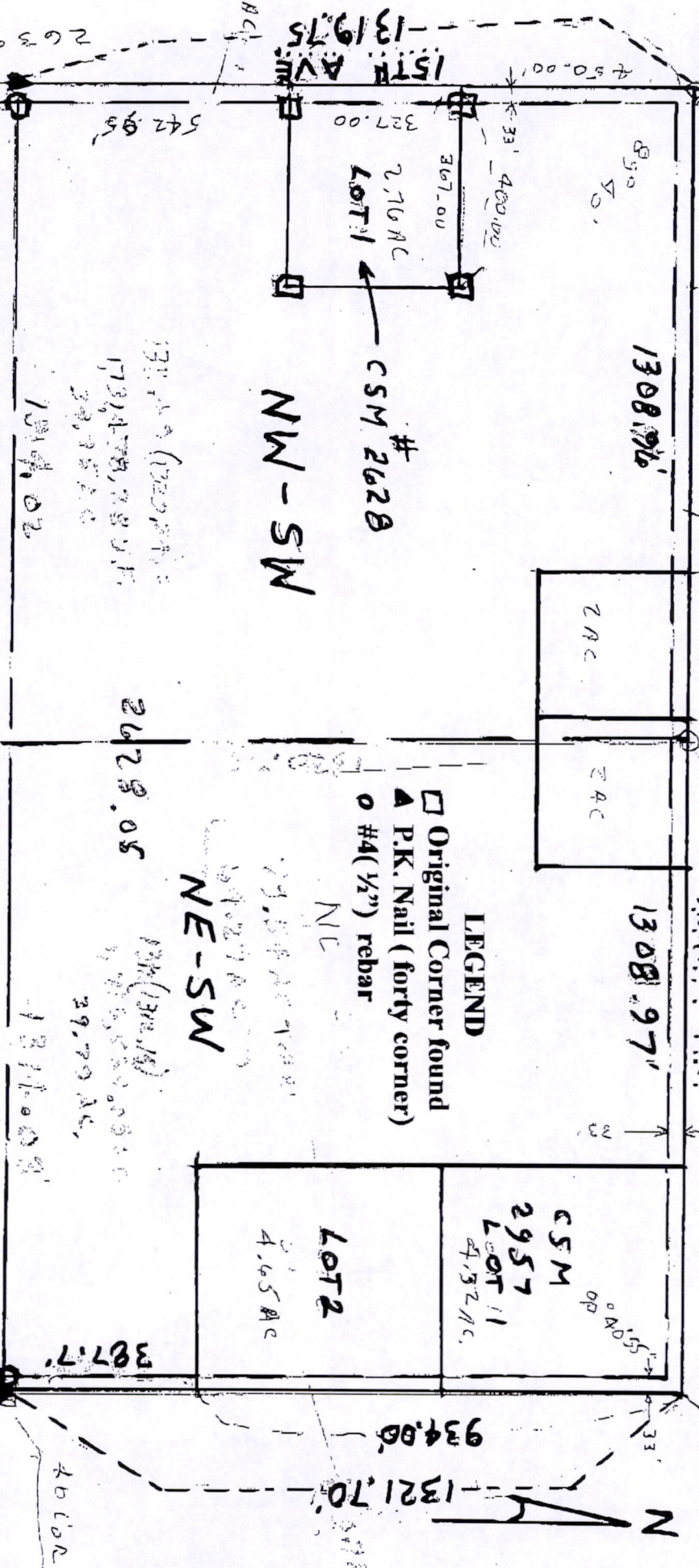
1,934 AC R/W

40 COE

SW 1/4, SEC 1, T20N, R. 5E

TOWN OF ROME, ADAIR CO., WIS. CENTER 1/4

AKRON PR.



LEGEND

- Original Corner found
- ▲ P.K. Nail (forty corner)
- #4 (1/2") rebar

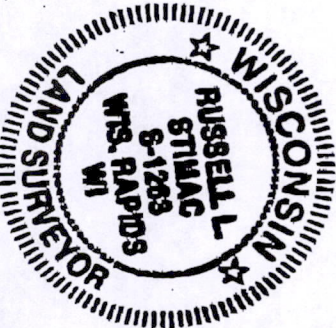
I Russell L. Stimac, Registered Land Surveyor, hereby certify:
 That I have surveyed and located four original lot corners of Lot #1, C.S.M. # 2628. I have located the S.W. corner (Forty Corner) of NW-SW, Sec. 1, T. 20 N., R. 5 E., I have located the S.E. corner (Forty Corner) of NE-SW. I have staked the R/W off the Forty Corners. I have placed ribbon and lath at each said lot corners, that I have made this survey by the direction of Rome Realty representing Joyce Murray owner of part of the said NW-SW & NE-SW, Sec. 1 T. 20, N., R. 5 E.

Russell L. Stimac

Russell L. Stimac RLS S-1263

Date June 27, 2009

Pos01200531001



BEG 90° 20' 55"

AZ 179° 39' 05"

Station