

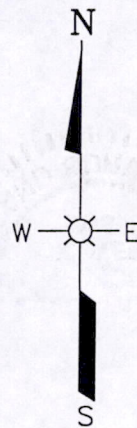
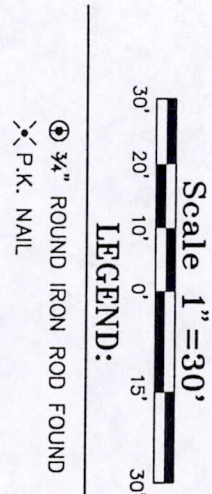
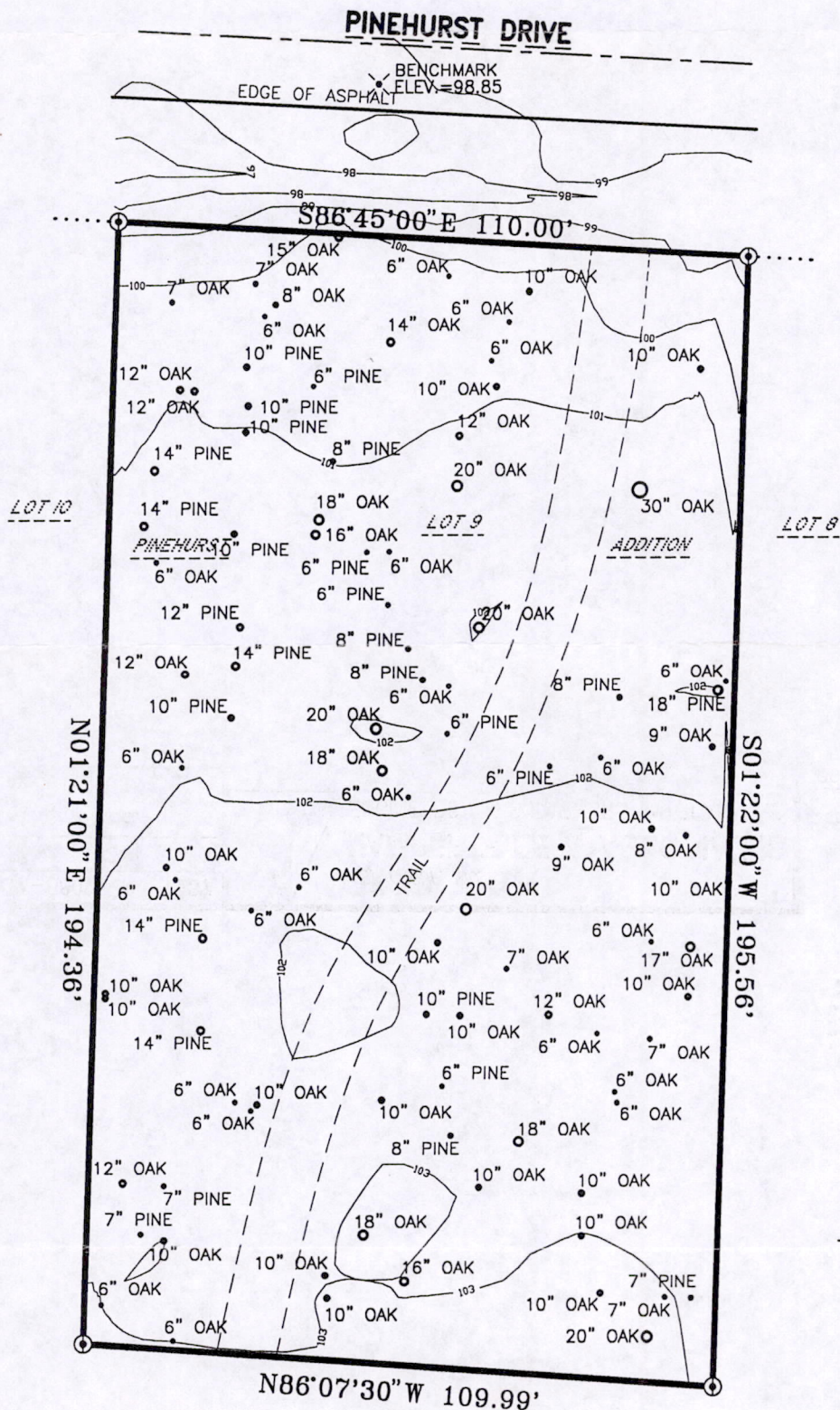
TOPOGRAPHIC SURVEY

FOR

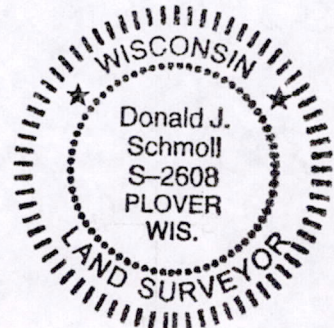
Robert Jones

Lot 9, Pinehurst Addition to Lake Arrowhead, being part of
Section 13, T20N, R5E, Town of Rome, Adams County, Wisconsin

NE SW



LOT 3
21,430 SQ. FT.
0.492 ACRES



Dwg. No. A-8807	137
Project No. 03-034	
Drawn By: Don Schmoll	
Date: March 5, 2003	
Sheet 1 of 1 Sheets	

ESP GROUP, INC.
LAMPERT-LEE & ASSOCIATES
ENGINEERS • SURVEYORS • PLANNERS
10968 State Hwy. 54 East • Wisconsin Rapids, WI 54494-8718
715-424-3131 or 715-344-0068 • FAX 715-423-8774

Donald J. Schmoll 3-5-03
DONALD J. SCHMOLL DATE
RLS-2608

POS 13200531001