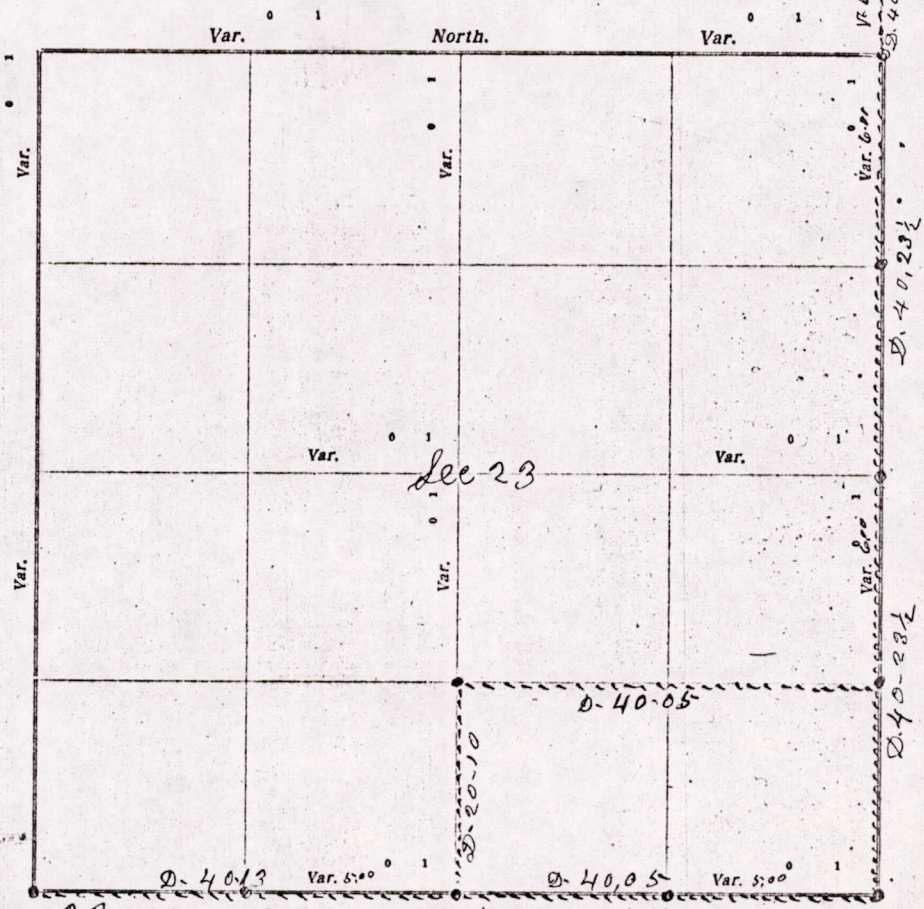


CERTIFICATE OF SURVEY.

STATE OF WISCONSIN, } ss. W. L. Smith Surveyor, in and for the County and State aforesaid, do

hereby certify that I have surveyed and subdivided Section 23 Township 20 North of Range 6 East of 4th Principal Meridian, as represented by the courses and distances on the following plat, and annexed field-notes of survey:

Established the center of the section at the point of intersection of straight quarter lines.
Established all quarter-quarter corners upon the section boundary at proportional distances between known section and quarter section corners, according to the original field-notes of the Government survey.
Established all lost corners at proportionate distances between known corners, according to original field-notes of the Government survey.



Plat of Section 23, Township 20 North, Range 6 East of 4th Principal Meridian. Scale, 80 chains to 6 inches. The figures in red ink are the lengths of the lines as stated in the field-notes of the Government survey.

Declination of the Magnetic Meridian from the True Meridian _____ East.

Surveyed and subdivided this 18th day of August A. D. 1915, in accordance with the State Laws and Instructions of the Commissioner of the General Land Office, and recorded on pages _____ of Register in the County Surveyor's office.

WITNESS my hand this 18th day of August A. D. 1915.

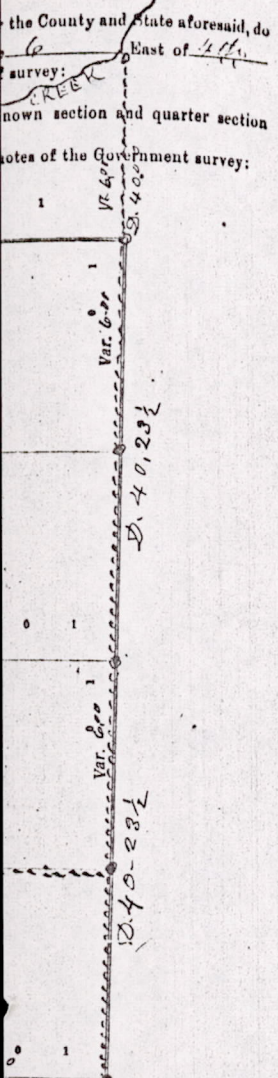
W. L. Smith County Surveyor.

The above work was done at the request of J. W. Penner, L. W. Ringham and others

MIS 23200600001

DESCRIPTION of Section, Quarter Section and Quarter-quarter Section Corners of Section
 Township _____ North, Range _____ East of _____ Principal Meridian.

N. B.—The variation of needle adopted in establishing corners is _____



No.	Government Corners	Bearing Trees	In. dia.	Courses they bear	Links Distant	Bearing Trees	In. dia.	Courses they bear	Links Distant
1	N. W. Sec. cor. Identified								
2	N. E. Sec. cor. Identified								
3	S. E. Sec. cor. Identified	new	Whit oak	12 N-41 1/2 E	290				
4	S. W. Sec. cor. Identified								
5	N. 1/4 Sec. cor. Identified								
6	E. 1/4 Sec. cor. Identified								
7	S. 1/4 Sec. cor. Identified								
8	W. 1/4 Sec. cor. Identified								
No. SUBDIVISION CORNERS.									
1	Center 1/4 Sec. cor.								
2	North 1/4-1/4s N. W. qr.								
3	East 1/4-1/4s N. W. qr.								
4	South 1/4-1/4s N. W. qr.								
5	West 1/4-1/4s N. W. qr.								
6	Center 1/4-1/4s N. W. qr.								
7	North 1/4-1/4s N. E. qr.								
8	East 1/4-1/4s N. E. qr.								
9	South 1/4-1/4s N. E. qr.								
10	Center 1/4-1/4s N. E. qr.								
11	East 1/4-1/4s S. E. qr.								
12	South 1/4-1/4s S. E. qr.								
13	West 1/4-1/4s S. E. qr.								
14	Center 1/4-1/4s S. E. qr.								
15	South 1/4-1/4s S. W. qr.								
16	West 1/4-1/4s S. W. qr.								
17	Center 1/4-1/4s S. W. qr.								

NAMES OF SWORN ASSISTANTS.

CHAINMEN

FLAGMEN

AXMEN

G. W. Purves
 W. R. Greenwood

MINUTES.

Commencing at the identified quarter Post between sections 13-14 T-20-R-6-E and ran south at 6-D-V 40 chains to the N E corner of section 23 & set Post. Then ran north on the east side of section 23 at 6-D-V 80 chains & 47 links to the S. E. corner of said section 23 found Post & stump of Bearing. made one new Bearing as shown above also set quarter Post at 40-23. could find no Bearing for this quarter Post. then ran west on the section line on the south side of section 23 at 5-D-V 40 chains and 5 links to the quarter Post. found stump of Gov Bearing & set new Post then west same V 40 chains & 13 links & set Post. then Ran North from the quarter Post bearings. for this S W corner of section 23 then Ran North from the quarter Post on the south side of section 23 on the N & S quarter line 20 chains & 10 links and set Post. then East on the 8th 40.05 to the 8th Post on the section line on the east side of the section

M. B. Smith County Surveyor

M1523200600001

Meridian. Scale, 80 chains to 0

State Laws and Instructions of Surveyor's office.

County Surveyor.

and others