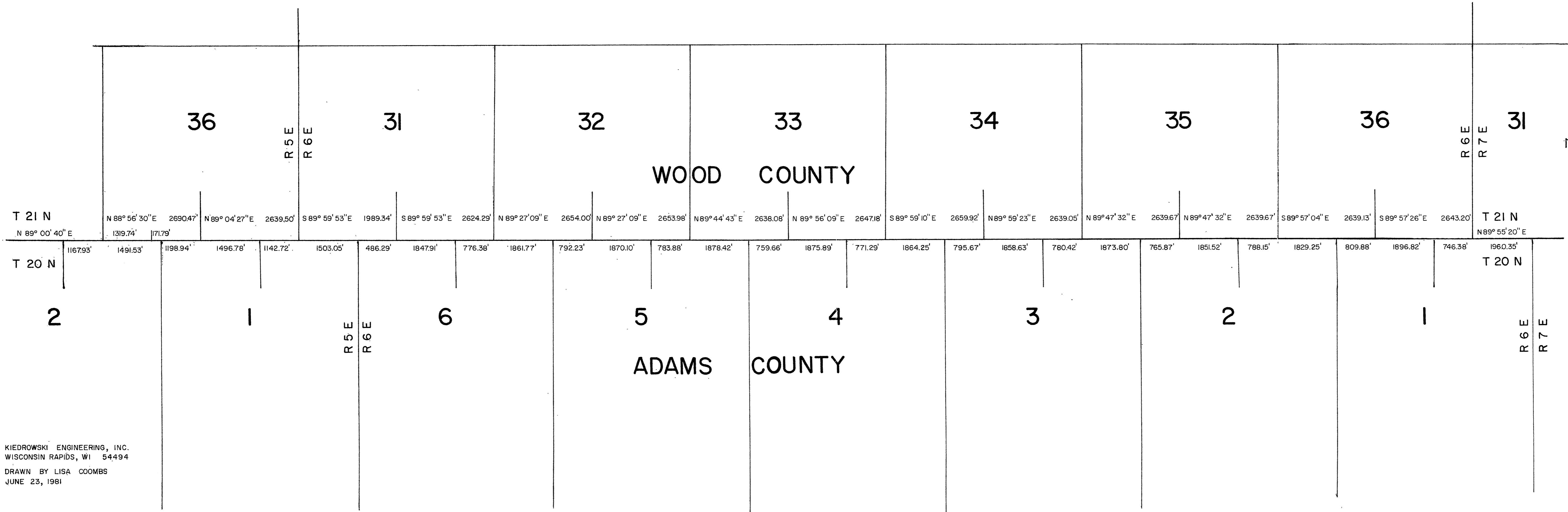


File:
1-20-6



WOOD
ADAMS
COUNTY
LINE

KIEDROWSKI ENGINEERING, INC.
WISCONSIN RAPIDS, WI 54494
DRAWN BY LISA COOMBS
JUNE 23, 1981

Kiedrowski Engineering, Inc
4340 80th Street South (Kellner)
Wisconsin Rapids, WI 54494
8/4/81

MS0120060001