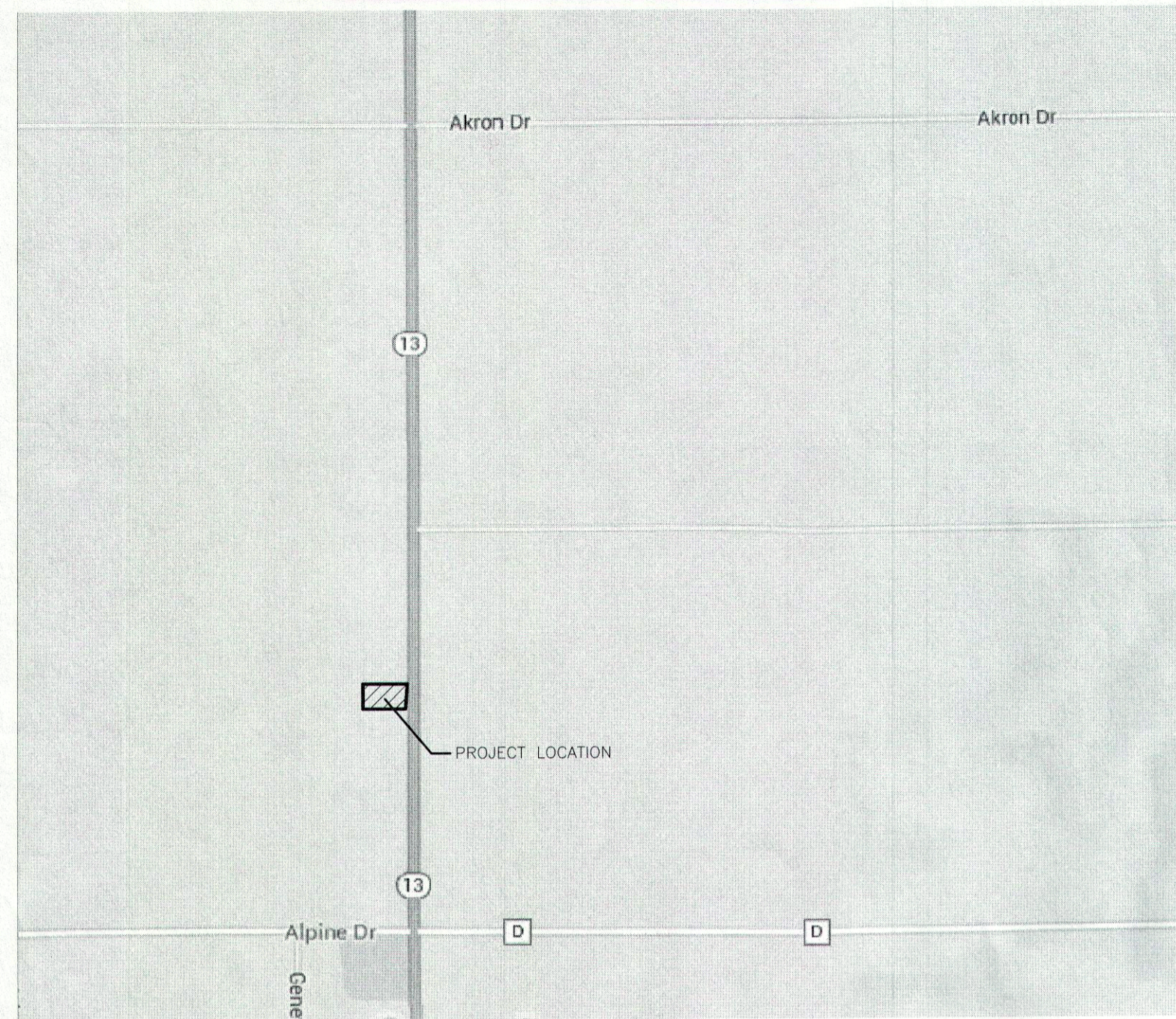
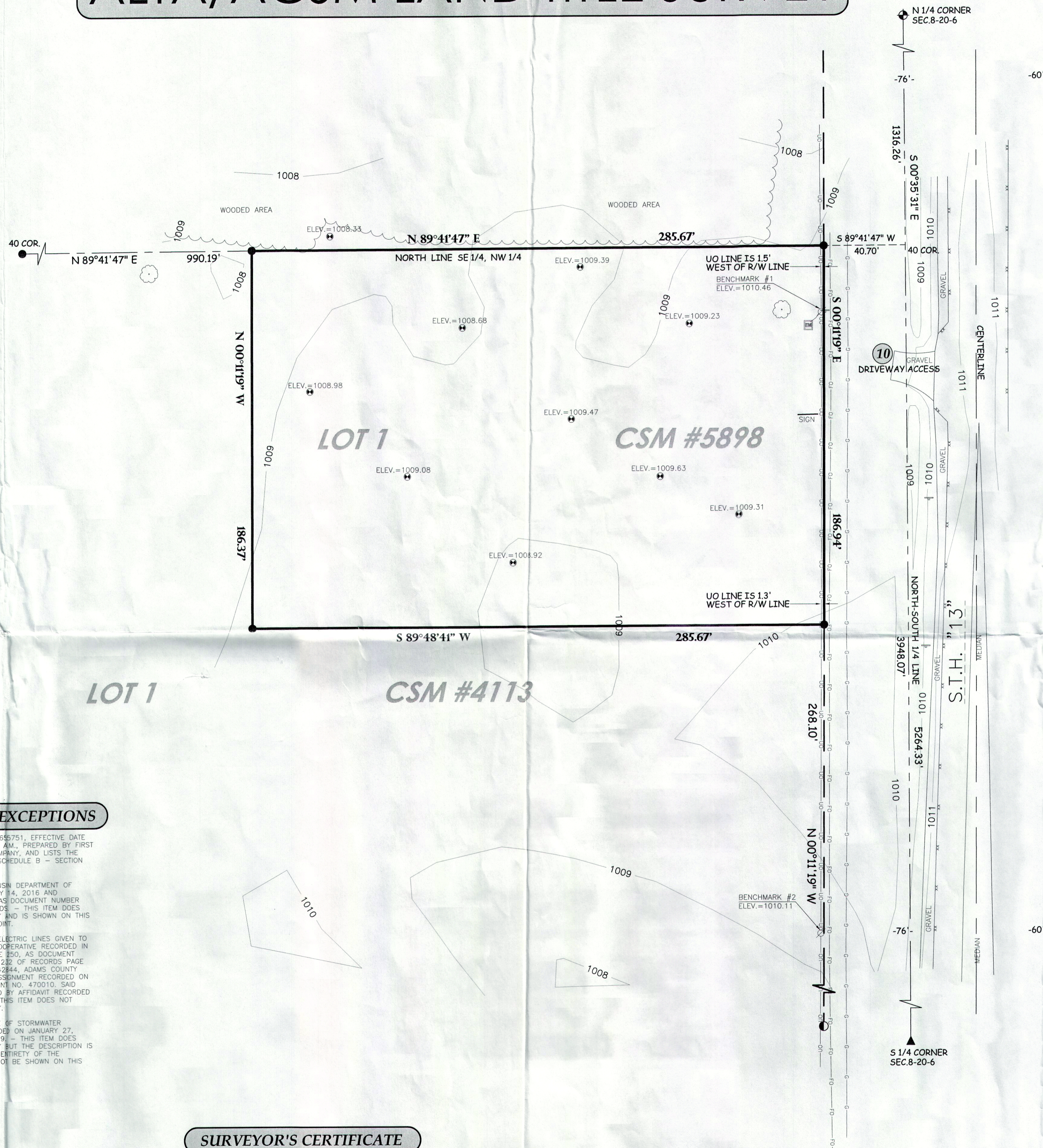


VICINITY MAP



ALTA/ACSM LAND TITLE SURVEY



SURVEYOR'S NOTES

1. SOME FEATURES SHOWN ON THIS PLAT MAY BE SHOWN OUT OF SCALE FOR CLARITY.
2. DIMENSIONS ON THIS PLAT ARE EXPRESSED IN FEET AND DECIMAL PARTS THEREOF UNLESS OTHERWISE NOTED. MONUMENTS WERE FOUND AT POINTS WHERE INDICATED.
3. THE BASIS OF BEARINGS FOR THIS SURVEY IS THE NORTH-SOUTH 1/4 SECTION LINE OF SECTION 8, TOWNSHIP 20 NORTH, RANGE 6 EAST, RECORDED TO BEAR S 0°05'31\"/>

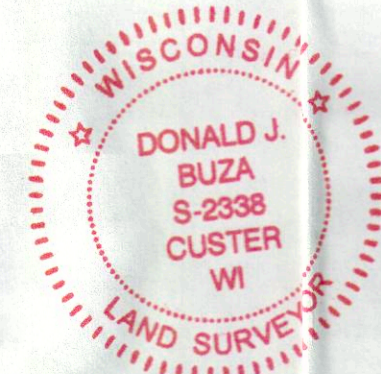
SCHEDULE B-2 EXCEPTIONS

10. ACCESS COVENANT WITH WISCONSIN DEPARTMENT OF TRANSPORTATION DATED JANUARY 14, 2016 AND RECORDED FEBRUARY 5, 2016 AS DOCUMENT NUMBER 526708, ADAMS COUNTY RECORDS - THIS ITEM DOES AFFECT THE SUBJECT PROPERTY AND IS SHOWN ON THIS MAP AS A DRIVEWAY ACCESS POINT.
11. RIGHT OF WAY EASEMENT FOR ELECTRIC LINES GIVEN TO ADAMS-MARQUETTE ELECTRIC COOPERATIVE RECORDED IN VOLUME 220 OF RECORDS PAGE 350, AS DOCUMENT NUMBER 236191, AND VOLUME 232 OF RECORDS PAGE 462, AS DOCUMENT NUMBER 242844, ADAMS COUNTY RECORDS; PARTIAL EASEMENT ASSIGNMENT RECORDED ON OCTOBER 24, 2007 AS DOCUMENT NO. 470010, SAID PARTIAL ASSIGNMENT CORRECTED BY AFFIDAVIT RECORDED AS DOCUMENT NO. 470296. - THIS ITEM DOES NOT AFFECT THE SUBJECT PROPERTY.
13. RESTRICTIONS FOR MAINTENANCE OF STORMWATER MANAGEMENT MEASURES RECORDED ON JANUARY 27, 2012 AS DOCUMENT NO. 501029. - THIS ITEM DOES AFFECT THE SUBJECT PROPERTY BUT THE DESCRIPTION IS BLANKET IN NATURE OVER THE ENTIRETY OF THE PROPERTY AND THEREFORE CANNOT BE SHOWN ON THIS MAP.

SURVEYOR'S CERTIFICATE

TO: DGI-ROME, LLC AND FIRST AMERICAN TITLE INSURANCE COMPANY;
 THIS IS TO CERTIFY THAT THIS MAP OR PLAT AND THE SURVEY ON WHICH IT IS BASED WERE MADE IN ACCORDANCE WITH THE 2011 MINIMUM STANDARD DETAIL REQUIREMENTS FOR ALTA/ACSM LAND TITLE SURVEYS, JOINTLY ESTABLISHED AND ADOPTED BY ALTA AND NSPS; AND INCLUDES ITEMS 1, 2, 3, 4, 5, 6b, 8b, 10, 11b, 13, 14, 16, 17, 18 AND 19 OF TABLE A THEREOF. THE FIELD WORK WAS COMPLETED ON JULY 9, 2015.

Donald J. Buza 4/12/16
 DONALD J. BUZA DATE
 PROFESSIONAL LAND SURVEYOR #2338



LEGAL DESCRIPTION

LOT ONE (1) CERTIFIED SURVEY MAP NO. 5898, FILED IN THE OFFICE OF THE REGISTER OF DEEDS FOR ADAMS COUNTY, WISCONSIN, ON DECEMBER 10, 2015, IN VOLUME 30 ON PAGE 107, AS DOCUMENT NO. 523954; SAID SURVEY MAP BEING PART OF CSM NO. 4113 IN THE SOUTHWEST 1/4 OF THE NORTHWEST 1/4 OF SECTION 8, TOWNSHIP 20 NORTH, RANGE 6 EAST, TOWN OF ROME, ADAMS COUNTY, WISCONSIN.

BENCH MARK

ELEVATIONS ARE REFERENCED TO NAVD 88 DATUM.
 BENCHMARK #1
 SPIKE IN POWER POLE #114, LOCATED ON THE WEST SIDE OF S.T.H. #13 AND BEING APPROXIMATELY 30 FEET SOUTH OF THE NORTHEAST CORNER OF THE SUBJECT PROPERTY. ELEVATION = 1010.46
 BENCHMARK #2
 SPIKE IN POWER POLE #115, LOCATED ON THE WEST SIDE OF S.T.H. #13 AND BEING APPROXIMATELY 350 FEET SOUTH OF THE NORTHEAST CORNER OF THE SUBJECT PROPERTY. ELEVATION = 1010.11

UNDERGROUND UTILITIES

THESE RECORD DRAWINGS HAVE BEEN PREPARED, IN PART, ON THE BASIS OF INFORMATION COMPILED AND FURNISHED BY OTHERS. THE SURVEYOR AND ARCHITECT WILL NOT BE RESPONSIBLE FOR ANY ERRORS OR OMISSIONS WHICH HAVE BEEN INCORPORATED INTO THIS DOCUMENT AS A RESULT.
 SOME UTILITIES HAVE BEEN LOCATED BY MAPS PROVIDED BY OTHERS - LOCATIONS ARE APPROXIMATE.
 PRIVATE UTILITIES MAY EXIST BUT ARE NOT SHOWN ON MAP. CONTACT DIGGERS HOTLINE FOR LOCATIONS.
 FIELD VERIFY SANITARY AND STORM SEWER PIPE SIZE AND LOCATION.
 UNDERGROUND UTILITIES SHOWN ON THIS MAP ARE BASED IN PART ON MARKINGS BY DIGGERS HOTLINE. (TICKET #20152419360)

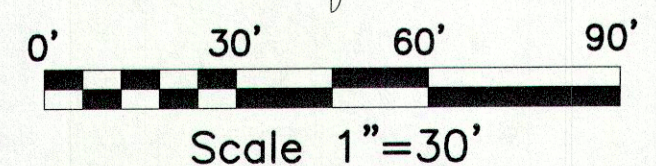
LEGEND

- These standard symbols will be found in the drawing.
- OVERHEAD UTILITIES
 - BURIED ELECTRIC
 - BURIED GAS
 - FIBER OPTICS
 - EDGE OF BITUMINOUS
 - CONTOUR LINE
 - ELECTRIC METER
 - POWERPOLE
 - SOIL BORING
 - TREE
 - MAG NAIL FOUND
 - 3/4\"/>

SURVEYOR

DONALD J. BUZA
 POINT OF BEGINNING INC.
 5709 WINDY DRIVE, SUITE D
 STEVENS POINT, WISCONSIN 54482
 MOBILE (715)344-9999
 FAX (715)344-9922
 EMAIL donb@pbinc.com

PO508200621001



POINT OF BEGINNING, INC. HOLDS THE RIGHTS TO COPYRIGHT IN AND TO THESE PRINTS, DRAWINGS AND DOCUMENTS. NO REPRODUCTION, COPYING, ALTERATION, MODIFICATION, USAGE, INCORPORATION INTO OTHER DOCUMENTS OR ASSIGNMENT OF THE SAME MAY OCCUR WITHOUT THE PRIOR WRITTEN PERMISSION OF POINT OF BEGINNING, INC.
 ©2015 POINT OF BEGINNING, INC.

REVISIONS	
T.P.	4-12-16
CHECKED:	DONALD J. BUZA
DRAWN:	TRAVIS PLANTIC
DATE	12-17-15
PROJECT NO.	15-465

ALTA/ACSM

DGI-ROME, LLC
 DOLLAR GENERAL
 TOWN OF ROME
 ADAMS COUNTY, WISCONSIN

Civil Engineering
 Land Surveying
 Landscape Architecture
 5709 Windy Drive, Suite D
 Stevens Point, WI 54482
 715.344.9999 (Ph) 715.344.9922 (Fx)



ALTA