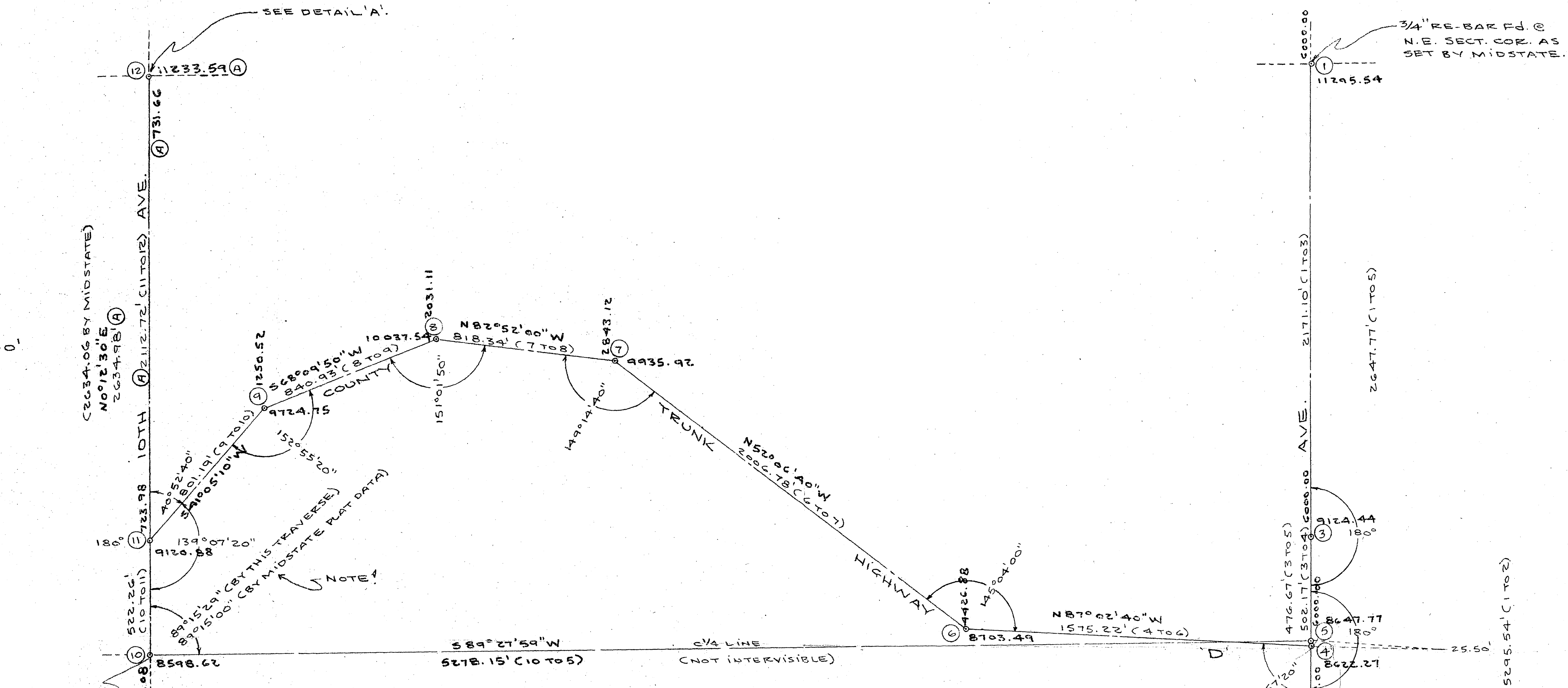


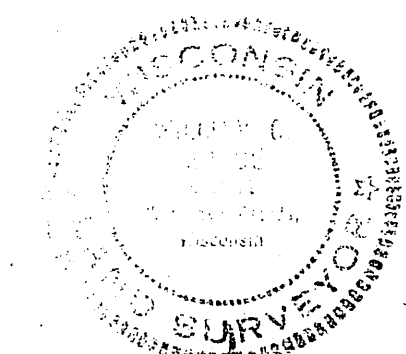
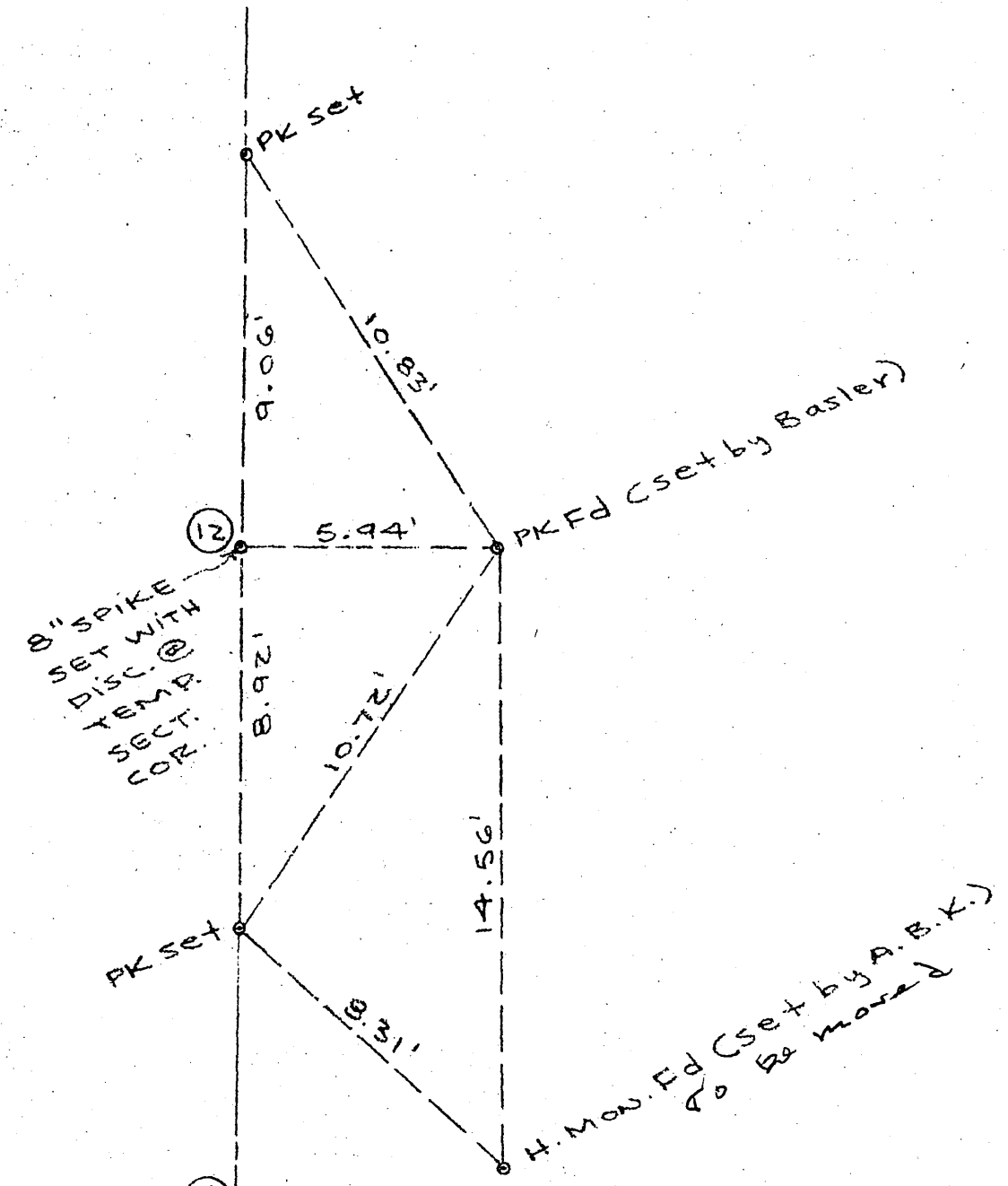
1" = 300'



H. Mon. Fd @ WEST 1/4 COR. AS SET BY A. B. K.

NOTE: - LINE 10 TO 12 ESTABLISHED BY PARALLELING RECORD PLATS BY MIDSTATE TO EAST & WEST OF LINE 10 TO 11. (33.00 OFF EXISTING PLAT MONUMENTS Fd).
- 2" DIA. I.P. Fd 33' & 264' EAST OF STA. 10, AS SET BY MIDSTATE FOR ADJACENT PLAT, ON CV4 LINE 10 TO 5.

NOTE: - PK NAIL SET @ EAST 1/4 COR. (STA. NO. 5), MIDWAY BETWEEN SECT. COR.'S.
- FIELDWORK COMPLETED ON 12/29/79.
- DISTANCES BY AGA 76.
- ANGLES BY GEOTEC GTG 20" VERNIER THEODOLITE.
- COMPUTATIONS BY T159/PC100A, WITH SURV-CROM MODULE.
- ALL TRAVERSE STATIONS ARE PK NAILS IN EXISTING BLACK TOP PAVEMENT UNLESS OTHERWISE NOTED.
- PK NAIL @ STA. 3 SET ON TOP OF ROADWAY HILL FOR INTERVISIBILITY BETWEEN STA. 1 & 2.



William J. ...
12/29/79
REVISED: 1/5/80

TRAVERSE CONTROL DATA
S.10, T.20N, R.6E.
TOWN OF ROME
ADAMS COUNTY