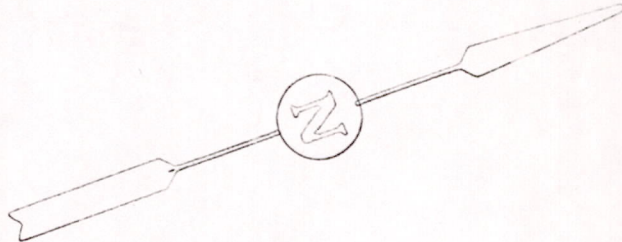
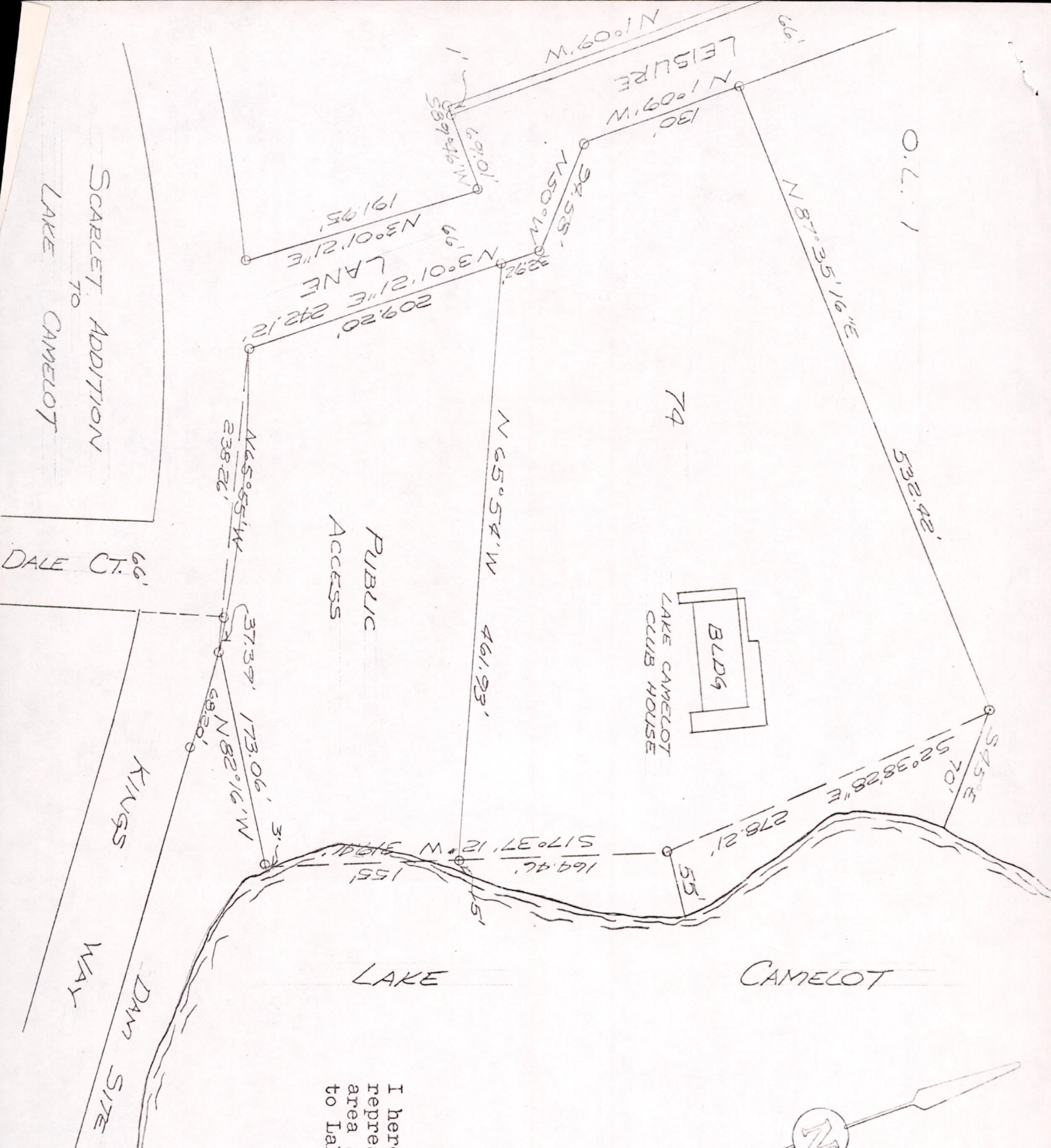
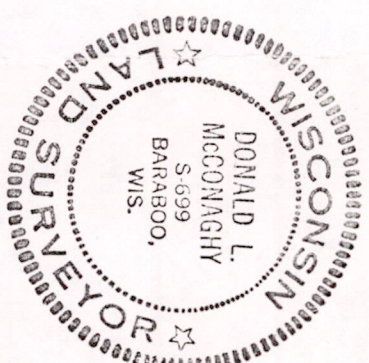


O.L. 1



Public Access
 Located in
 CHESTER ADDITION
 LAKE CAMELOT
 NW 1/4 - NE 1/4, SECTION 16, T20N, R2E
 TOWNSHIP OF BOMB, ADAMS CO, WIS.

Prepared By
 Mid-State Associates
 1111 Eighth Street
 Baraboo, Wisconsin



Post 620061006

I hereby certify that this drawing is a correct representation of the existing conditions in the area shown as "Public Access" in "Chester Addition to Lake Camelot", on August 2, 1972.

Donald L. McConaghy
 Donald L. McConaghy S-699

8/3/72