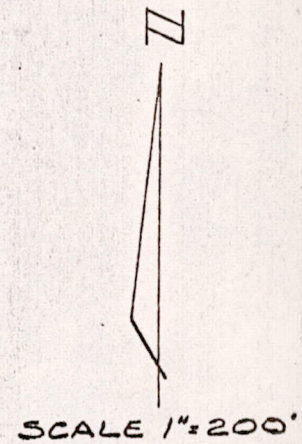
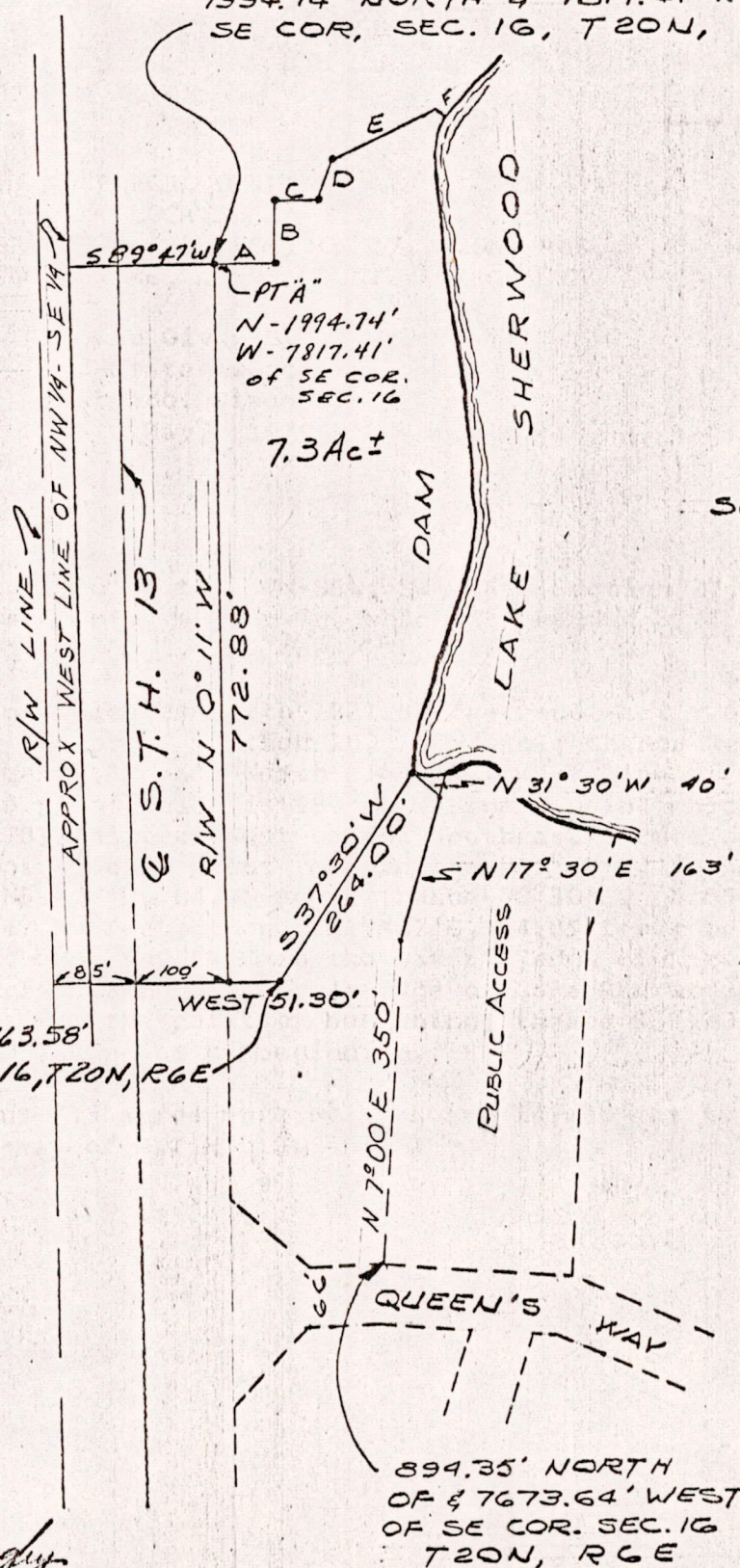


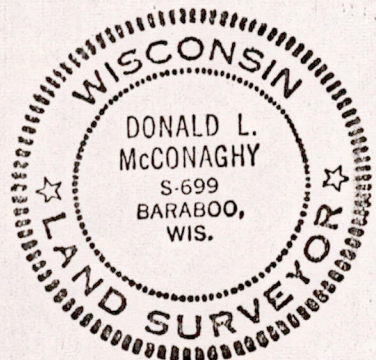
1994.74' NORTH & 7817.41' WEST OF SE COR., SEC. 16, T20N, R6E

LINE

A =	N 89° 47' E	64.75'
B =	N 0° 30' E	65.85'
C =	N 89° 53' E	47.39'
D =	N 19° 47' E	44.85'
E =	N 64° 25' E	126.95'
F =	S 49° 57' E	



P.O.B. - N-1221.86' & W-7763.58' FROM SE COR. SEC. 16, T20N, R6E



Donald L. McConaghy
May 26, 1970

POS 162006 W10

NWNE