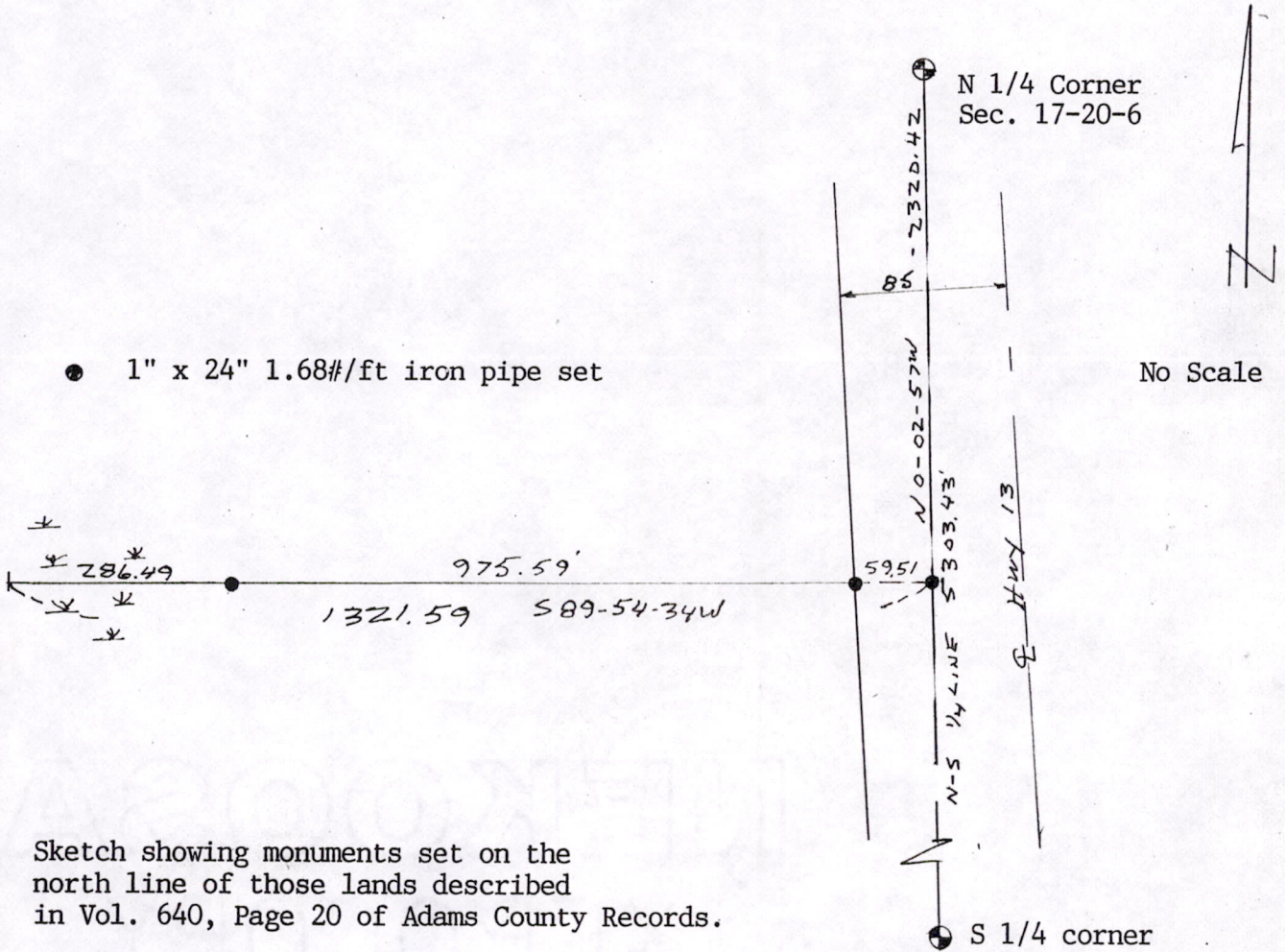


● 1" x 24" 1.68#/ft iron pipe set

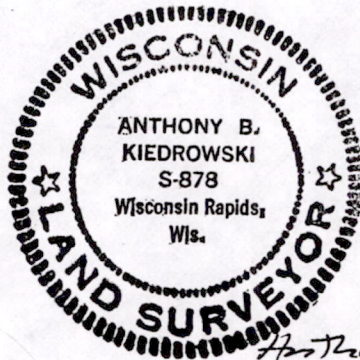


Sketch showing monuments set on the north line of those lands described in Vol. 640, Page 20 of Adams County Records.

For: Linda Ebbe

By: Kiedrowski Engineering, Inc  
Wisconsin Rapids, WI. 54494

July 1, 1994



*Anthony B. Kiedrowski*

POS 172006 11001