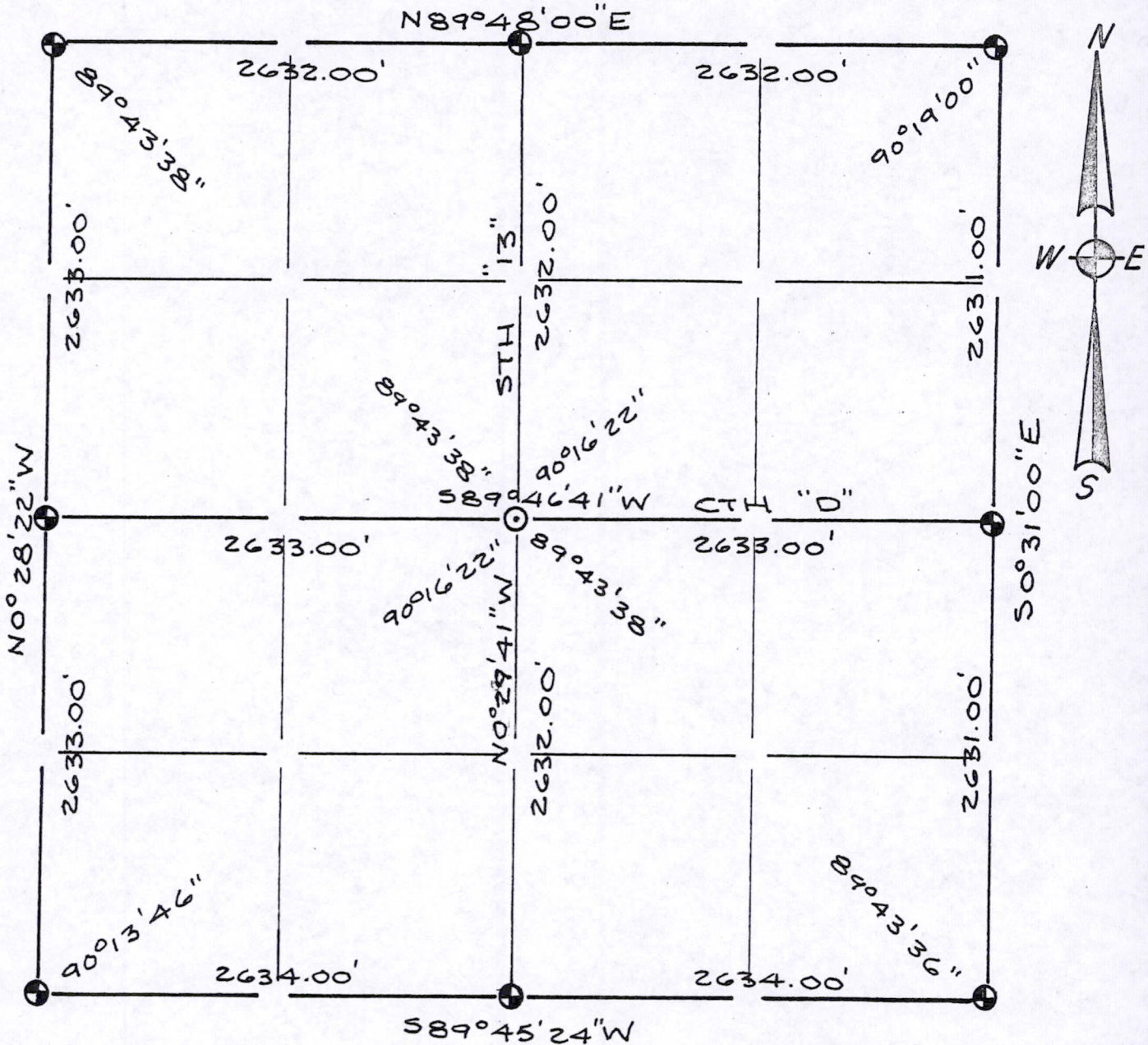


Section Summary and Index

Section 8 Town 20N Range 6E

ALL SECTION DATA BY EDM TRAVERSE.
ASSUMED BEARING REFERENCE.

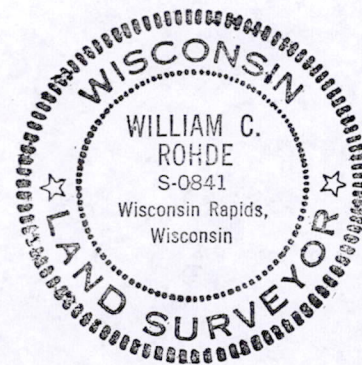
TOWN OF ROME
ADAMS COUNTY



LEGEND

- ⊕ - Harrison cast iron monument.
- - Stone or concrete monument.
- ⊙ - Other R.R. SPIKE WITH '+'

CUT IN TOP SET IN BLACK
TOP.



Sec 8 200600001

William C. Rohde
10/12/74