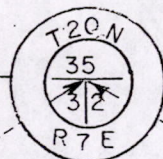


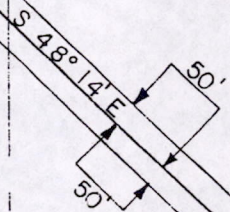
205+27

S.T.H. 73  
TO S.T.H. 13

P.I. 207+13.1  
Δ 43°-37'R  
D 5°



P.T. 211+26.8



GOV'T. LOT 2

GOV'T. LOT 1

±1765'

±1952'

GOV'T LOT 4

3.34 ACRES SOLD TO GENE S. & SANDRA S. BULA BY Q.C.D. DATED 1-29-01, RECORDED IN V. 2478, P. 12 AS DOC # 400097

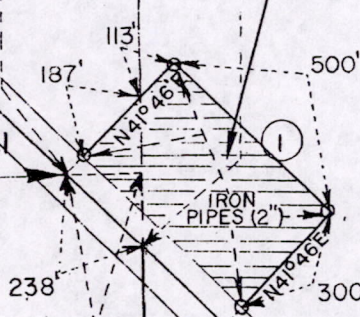
225+11

BEG. OF RELOC. ORDER PROJ. T 026-1(16)AUX. 9.1  
STA. 232+49  
= STA. 232+49 F.A.P. 440 B  
DIVISION JOB 4616

L E O L A

GOV'T. LOT 7

GOV'T. LOT 8



GOV'T LOT 5

ADAMS

COUNTY

242+70

END OF RELOC. ORDER PROJ. T 026-1(16)AUX. 9.1  
STA. 237+49  
= STA. 237+49 F.A.P. 440 B  
DIVISION JOB 4616

TO S.T.H. 13

R 7 E

TO PLAINFIELD

T 20 N

LOCATION SKETCH

ADAMS COUNTY

ACRES REQUIRED 3.44

① ANTON PALIK

INTERESTS REQUIRED FEE TITLE TO BE ACQUIRED BY THE STATE HIGHWAY COMMISSION OF WISCONSIN

SHEET 1 OF 1

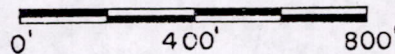
CODE 1.1-26.1-21.16 AUX. 9.1

STATE HIGHWAY COMMISSION OF WISCONSIN  
PLAT OF RIGHT OF WAY REQUIRED  
PROJECT T 026-1(16) AUX. 9.1  
C.T.H. "G" — NORTH COUNTY LINE ROAD  
S.T.H. 73 ADAMS COUNTY

SCALE

REVISED 8-17-01

APRIL 12 1962



0.095 MI.

MISO3200700002

Closed File # 26