

ADAMS COUNTY

Survey Monument Record

TYPE OF MONUMENT: 30" HARRISON

STATE PLANE COORDINATES: N \_\_\_\_\_

E \_\_\_\_\_

ELEVATION — M.S.L. DATUM: \_\_\_\_\_

THETA ANGLE: \_\_\_\_\_

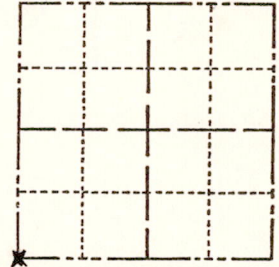
FIELD BOOK: 109 PAGE 3

CORNER NO. 203

SECTION 34

TOWN 20

RANGE 7



LOCATION (Indicated by 'X')

SEAL:



BASIS FOR MONUMENT LOCATION

(Use reverse side if necessary)

Show info such as: History of corner, with reference to Vol. and pg, dates, surveyor; exact description of monument replaced; if location computed, by taped or EDM traverse; landowner remarks, etc.

Set by retracement of Sam Mullen survey in SW 1/4 of section.

Duplicate everything same as recorded & filed in tie book

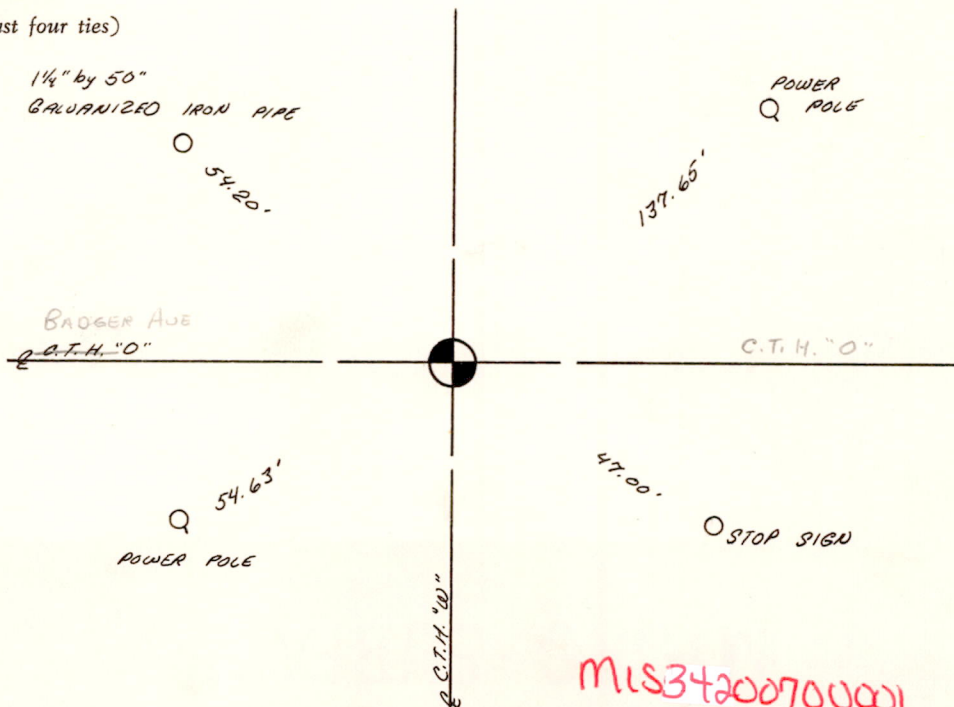
CERTIFIED CORRECT:

Anthony B. Kiedrowski Registered Land Surveyor

DATE: 2-22-73

TIE SKETCH

(Show at least four ties)



M1834200700001